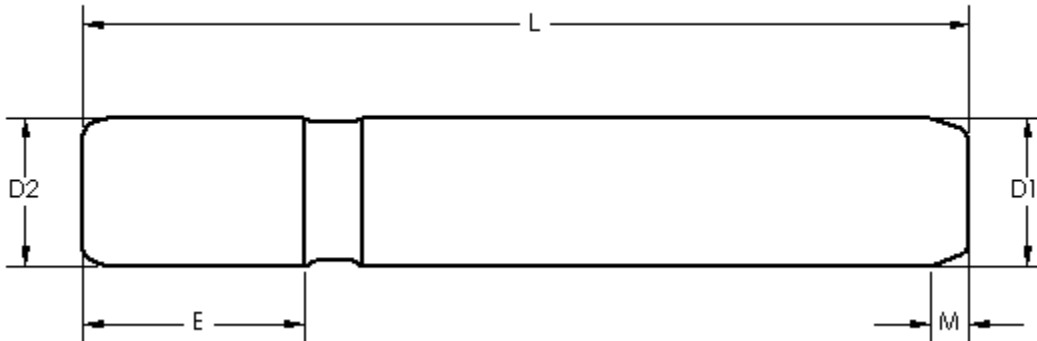


Straight Guide Posts

Janesville Tool & Mfg straight guide posts feature bearing quality case hardened and precision ground steel.



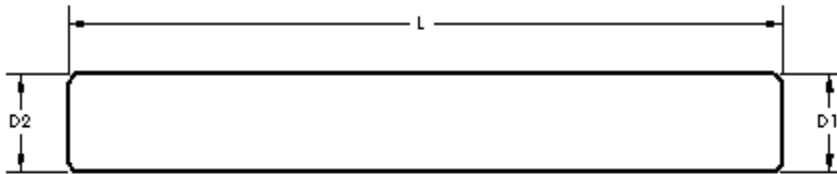
D1	1"	1 ¼"	1 ½"	1 ¾"	2"
D2	Press Fit Bore Size	Press Fit Bore Size	Press Fit Bore Size	Press Fit Bore Size	Press Fit Bore Size
Length (L)	<u>1.0008</u> <u>1.0002</u>	<u>1.2508</u> <u>1.2502</u>	<u>1.5008</u> <u>1.5002</u>	<u>1.7508</u> <u>1.7502</u>	<u>2.0008</u> <u>2.0002</u>
4.00	PP-008-016	N/A	N/A	N/A	N/A
4.25	PP-008-017	N/A	N/A	N/A	N/A
4.50	PP-008-018	PP-010-018	PP-012-018	N/A	N/A
4.75	PP-008-019	PP-010-019	PP-012-019	N/A	N/A
5.00	PP-008-020	PP-010-020	PP-012-020	N/A	N/A
5.25	PP-008-021	PP-010-021	PP-012-021	N/A	N/A
5.50	PP-008-022	PP-010-022	PP-012-022	N/A	N/A
5.75	PP-008-023	PP-010-023	PP-012-023	N/A	N/A
6.00	PP-008-024	PP-010-024	PP-012-024	PP-014-024	PP-016-024
6.50	PP-008-026	PP-010-026	PP-012-026	PP-014-026	PP-016-026
7.00	PP-008-028	PP-010-028	PP-012-028	PP-014-028	PP-016-028
7.50	PP-008-030	PP-010-030	PP-012-030	PP-014-030	PP-016-030
8.00	PP-008-032	PP-010-032	PP-012-032	PP-014-032	PP-016-032
8.50	PP-008-034	PP-010-034	PP-012-034	PP-014-034	PP-016-034
9.00	PP-008-036	PP-010-036	PP-012-036	PP-014-036	PP-016-036
10.00	PP-008-040	PP-010-040	PP-012-040	PP-014-040	PP-016-040
11.00	PP-008-044	PP-010-044	PP-012-044	PP-014-044	PP-016-044
12.00	PP-008-048	PP-010-048	PP-012-048	PP-014-048	PP-016-048
13.00	N/A	N/A	N/A	PP-014-052	PP-016-052
14.00	N/A	N/A	N/A	PP-014-056	PP-016-056
17.00	N/A	N/A	N/A	N/A	PP-016-068
20.00	N/A	N/A	N/A	N/A	PP-016-080
E	1.50	1.75	2	2.25	2.5
M	0.2756	.4008	.4008	.4008	.4008

* Janesville Tool & Mfg Straight Guide Posts are designed to be used with CB & CBB type bushings.

* Dimensions and specifications subject to change without prior notice.

Straight Guide Posts

Janesville Tool & Mfg straight guide posts feature bearing quality case hardened and precision ground steel.



D1	3/8"	1/2"	5/8"	3/4"
D2	.3740	.4990	.6240	.7490
Bore Size	.3745	.4995	.6245	.7495
Length (L)	Press Fit	Press Fit	Press Fit	Press Fit
3.50	2MDS-3	PP-004-014	PP-005-014	PP-006-014
4.00	PP-003-016	PP-004-016	PP-005-016	PP-006-016
4.25	PP-003-017	PP-004-017	PP-005-017	PP-006-017
4.50	PP-003-018	PP-004-018	PP-005-018	PP-006-018
4.75	PP-003-019	PP-004-019	PP-005-019	PP-006-019
5.00	PP-003-020	3MDS-3	4MDS-4	PP-006-020
5.25	PP-003-021	PP-004-021	PP-005-021	PP-006-021
5.50	PP-003-022	PP-004-022	PP-005-022	PP-006-022
5.75	PP-003-023	PP-004-023	PP-005-023	PP-006-023
6.00	PP-003-024	PP-004-024	PP-005-024	PP-006-024
6.50	PP-003-026	PP-004-026	PP-005-026	PP-006-026
6.75	PP-003-027	PP-003-027	PP-005-027	5MDS-5
7.00	PP-003-028	PP-004-028	PP-005-028	PP-006-028
7.50	PP-003-030	PP-004-030	PP-005-030	PP-006-030
8.00	PP-003-032	PP-004-032	PP-005-032	PP-006-032
8.50	PP-003-034	PP-004-034	PP-005-034	PP-006-034
9.00	PP-003-036	PP-004-036	PP-005-036	PP-006-036
10.00	PP-003-040	PP-004-040	PP-005-040	PP-006-040
11.00	PP-003-044	PP-004-044	PP-005-044	PP-006-044
12.00	PP-003-048	PP-004-048	PP-005-048	PP-006-048
13.00	PP-003-052	PP-004-052	PP-005-052	PP-006-052
14.00	PP-003-056	PP-004-056	PP-005-056	PP-006-056
17.00	PP-003-068	PP-004-068	PP-005-068	PP-006-068
20.00	PP-003-080	PP-004-080	PP-005-080	PP-006-080

* Janesville Tool & Mfg Straight Guide Posts are designed to be used with CB & CBB type bushings.

* Dimensions and specifications subject to change without prior notice.