

Cylinder Information

Model A-3070	3" Bore x 3" Stroke—Single End (Repair Kit 3" Bore—Single End)	606 20830
Model A-3066	3" Bore x 3" Stroke—Double End (Repair Kit 3" Bore—Double End)	605 20350
Model A-3160	4-1/2" Bore x 3" Stroke—Single End (Repair Kit 4-1/2" Bore—Single End)	602 20832
Model A-3151	4-1/2" Bore x 3" Stroke—Double End (Repair Kit 4-1/2" Bore—Double End)	601 20352
Model A-3243	4-1/2" Bore x 3" Stroke—Single End – 2 Stage (Repair Kit 4-1/2" Bore—Single End – 2 Stage)	608 608-RK
Model A-3235	4-1/2" Bore x 3" Stroke—Double End - 2 Stage (Repair Kit 4-1/2" Bore—Double End - 2 Stage)	607 607-RK



3930 Enterprise Dr.
Janesville, Wisconsin 53556

Phone 608/314-1620
Fax 608/314-1625

www.janesvilletool.com
sales@janesvilletool.com

SERVICE MANUAL

SERIAL# _____



A-3000 SERIES

A-3070
A-3066
A-3160
A-3151
A-3243
A-3235

3930 Enterprise Dr.
Janesville, Wisconsin 53556

Phone 608/314-1620
Fax 608/314-1625

www.janesvilletool.com
sales@janesvilletool.com



Safety Instructions

Read All Instructions Carefully

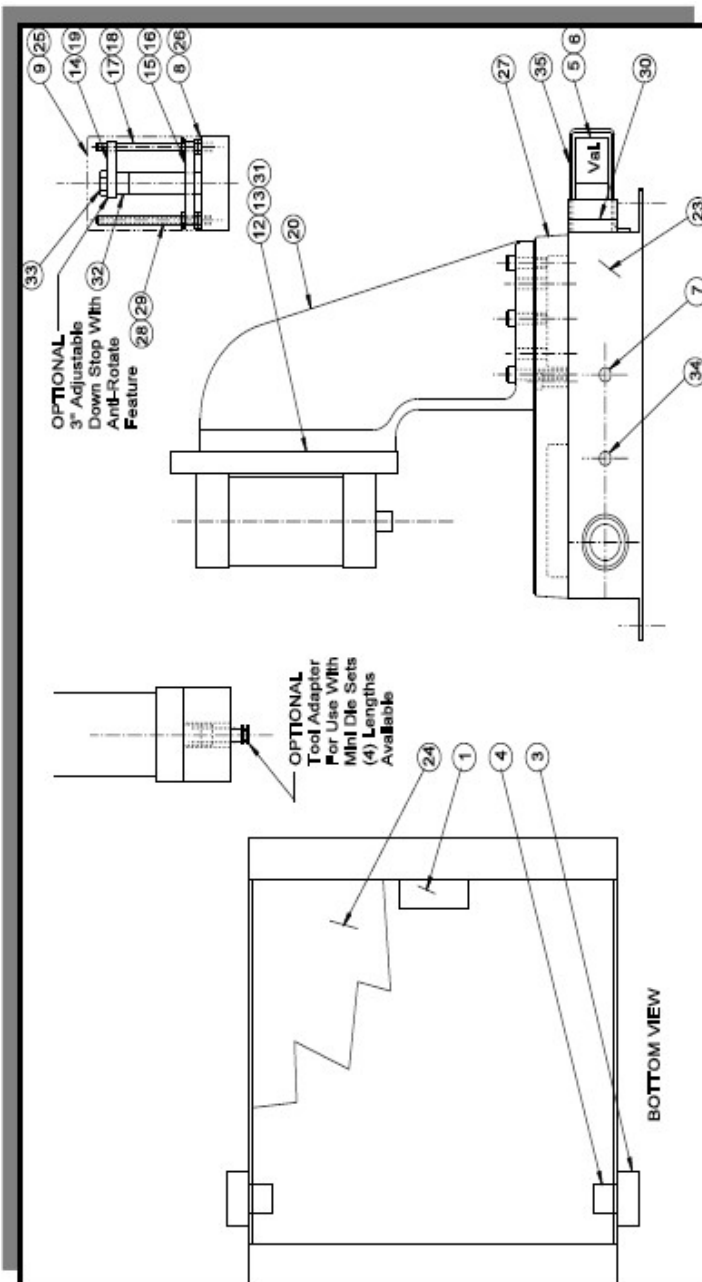
1. **DO NOT OPERATE PRESS WITH GUARDS REMOVED.**
ALL SAFETY DEVICES MUST BE INSTALLED AND OPERABLE.
2. **ADDITIONAL GUARDING IS REQUIRED FOR SPECIAL TOOLING.**
3. **DISCONNECT PRESS** when not in use, before servicing, and when changing accessories, such as down stops and tooling.
4. **WEAR SAFETY GLASSES WHILE OPERATING PRESS.**
5. **GUARD AGAINST ELECTRIC SHOCK.** Do not use in damp locations.
6. **DRESS PROPERLY.** Do not wear loose fitting clothing or jewelry that could get caught in moving parts.
7. **KEEP HANDS AWAY.** Never reach near moving parts.
8. **DO NOT OPERATE PRESS OVER 80 PSI.** Excess pressure may cause damage or injury.
9. **DO NOT OPERATE PRESS OVER LABELED VOLTAGE.**
10. **WATCH FOR DAMAGED PARTS.** If press is damaged during operation, examine the damaged part carefully to insure that it will operate properly. If in doubt, replace the damaged part. Check for alignment of moving parts, binding of moving parts, mounting and any other conditions that may affect its operation.

A-3000 Series Parts List

Models A-3070, A-3066, A-3160, A-3151, A-3243, A-3235

ITEM	REQ'D	NAME	PART NO.
1	1	Control Module	540
3	2	Push Button	503A
4	2	Contact, Push Button	545
6	1	Valve	511
7	1	On/Off Switch	560
8	1	Bottom Guard—3" Bore	2000-07
9	1	Top Guard—3" Bore	2000-13
12	1	Mounting Plate—3" Bore	3000-38
13	1	Mounting Plate—4 - 1/2" Bore	3000-68
14	1	Anti-Rotate—3" Bore	3000-68
15	1	Stop Plate—3" Bore	3000-04
16	1	Stop Plate—4 - 1/2" Bore	3000-07
17	1	Anti-Rotate Stud 4 - 1/2" Bore	3000-08
18	1	Anti-Rotate Stud 3" Bore	3000-09
19	1	Anti-Rotate 4 - 1/2" Bore	3000-10
20	1	Press Frame	3000-11
23	1	Control Box	3000-40
24	1	Bottom Cover	3000-47
25	1	Top Guard 4 - 1/2" Bore	3000-72
26	1	Bottom Guard 4-1/2" Bore	3000-23
27	2	Base	3000-36
28	2	Threaded Rods—3" Bore	3000-26
29	1	Threaded Rods—4-1/2" Bore	3000-27
30	1	Valve Mounting Plate 4-1/2" Bore	3000-66
31	1	Mounting Plate—Two Stage Cylinder	3000-22
34	1	Fuse	515
35	1	Valve Guard—3" Bore	1000-20

A-3000 Series Parts List



Safety Instructions Continued...

11. KEEP WORK AREA CLEAN. Cluttered areas and benches invite injuries.

12. STAY ALERT. Watch what you are doing. Use common sense.

MAINTENANCE GUIDELINES

Thanks to its unique design, this press requires virtually no maintenance. Clean, dry air is required for operation. (Lubricated air may be used, but must be used for the life of the press.)

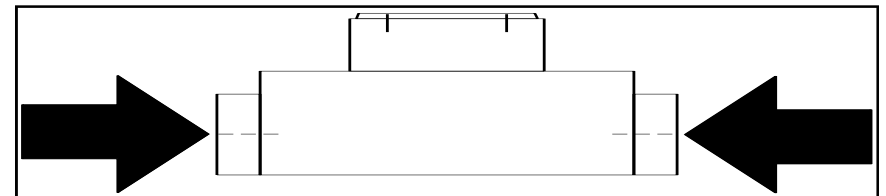
FLOW CONTROLS

To alter the ram descent speed on your JT&M Press, adjust the screw marked B Located on the valve at the rear of the press. To alter the ram ascent speed, adjust screw A. (The ram retraction speed has been preset by the factory.) Rotate the screws clockwise to decrease the speed of the ram.

PRESS OPERATION

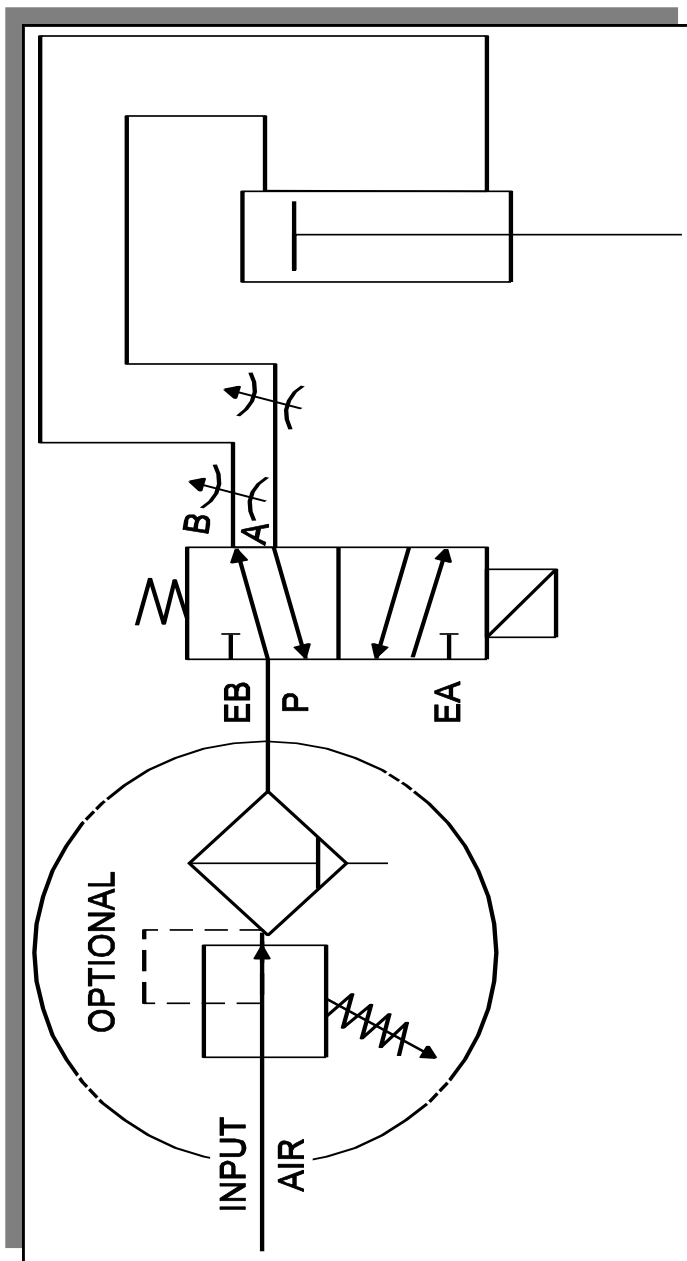
To operate press, push palm buttons in at the same time. Hold the palm buttons in until the down stroke is completed.

CONTROL MODULE – The life expectancy for the control module (#540) is ten million cycles. Replacing the module on a yearly basis will ensure production reliability and avoid costly downtime.



Please Write Serial No. On Front Cover.

Pneumatic Schematic



Electrical Schematic

