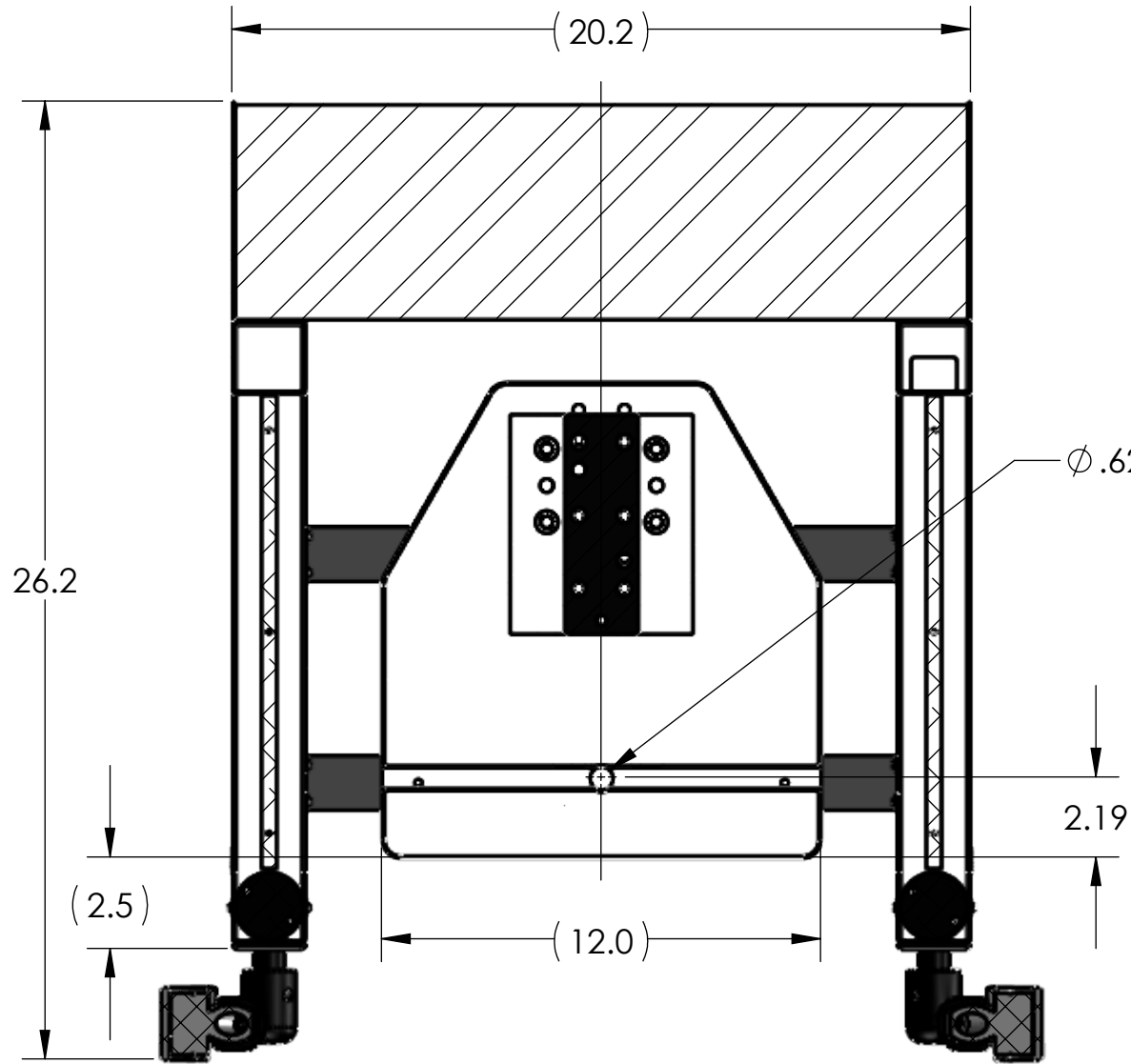
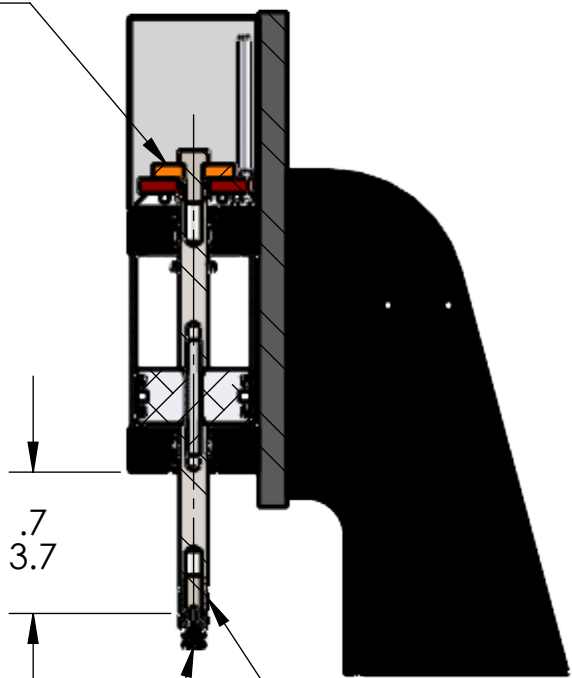


REGULATED PRESSURE	FORCE
60 PSI	396
80 PSI	528
100 PSI	660

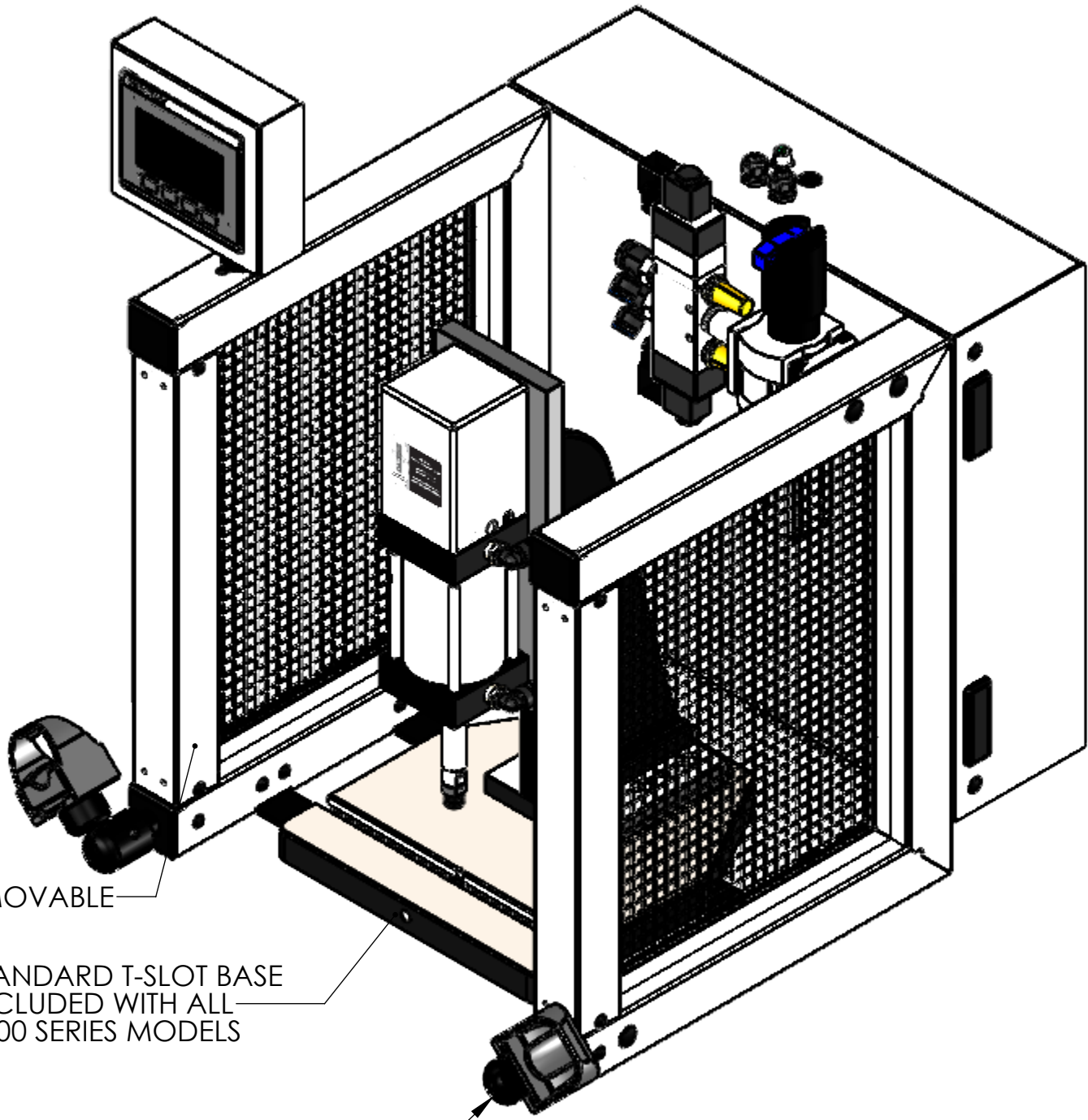
F
E
D
C
B
A



ADJUSTABLE DOWN STOP
ANTI-ROTATE MECHANISM



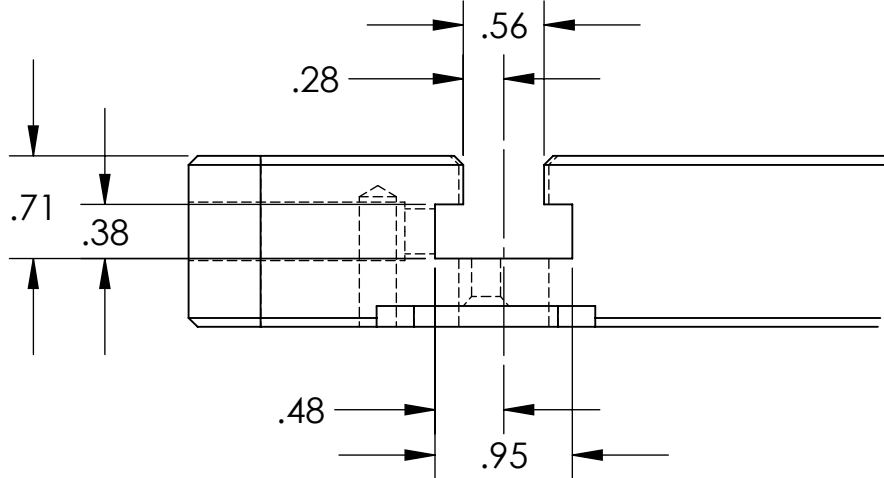
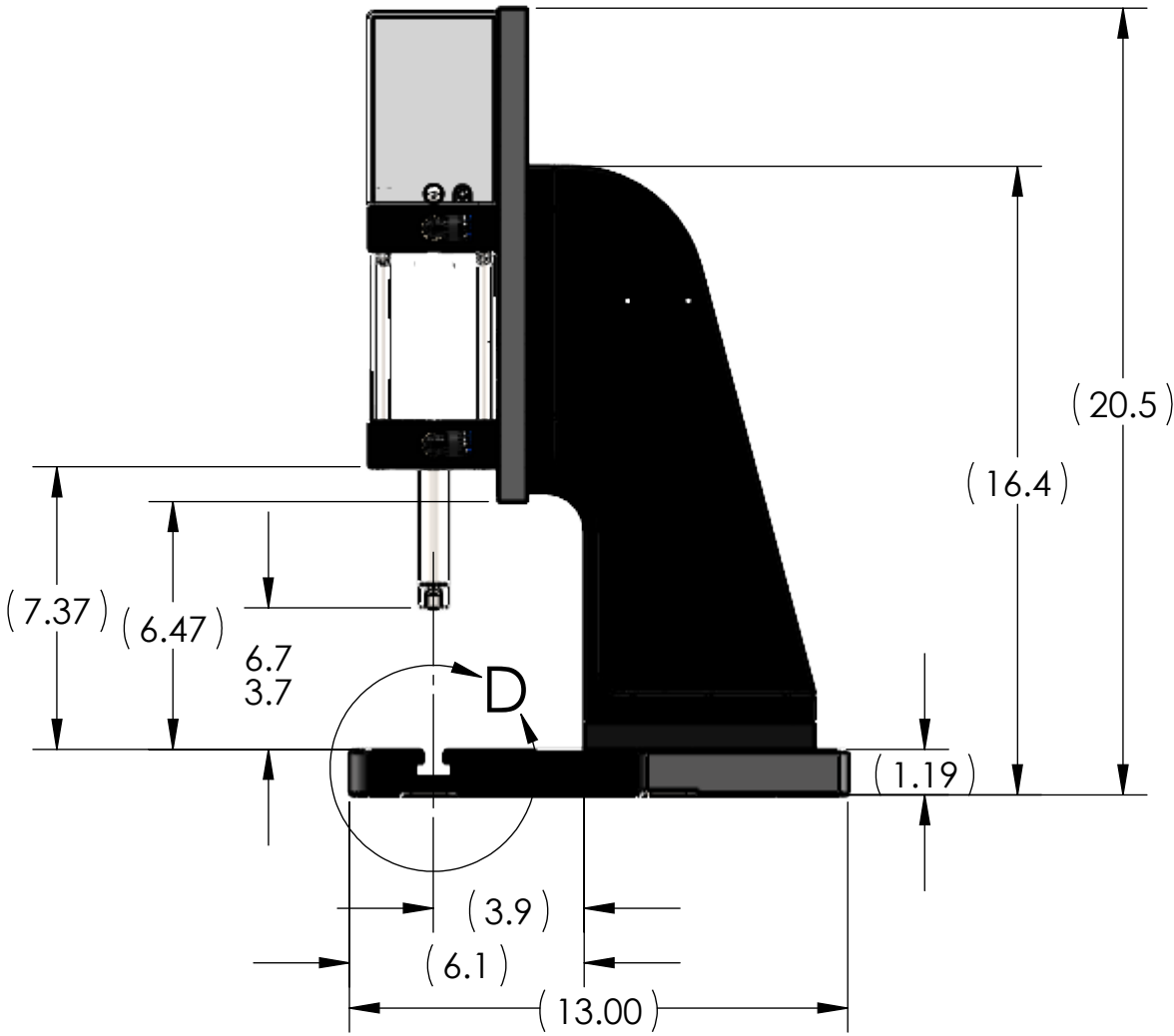
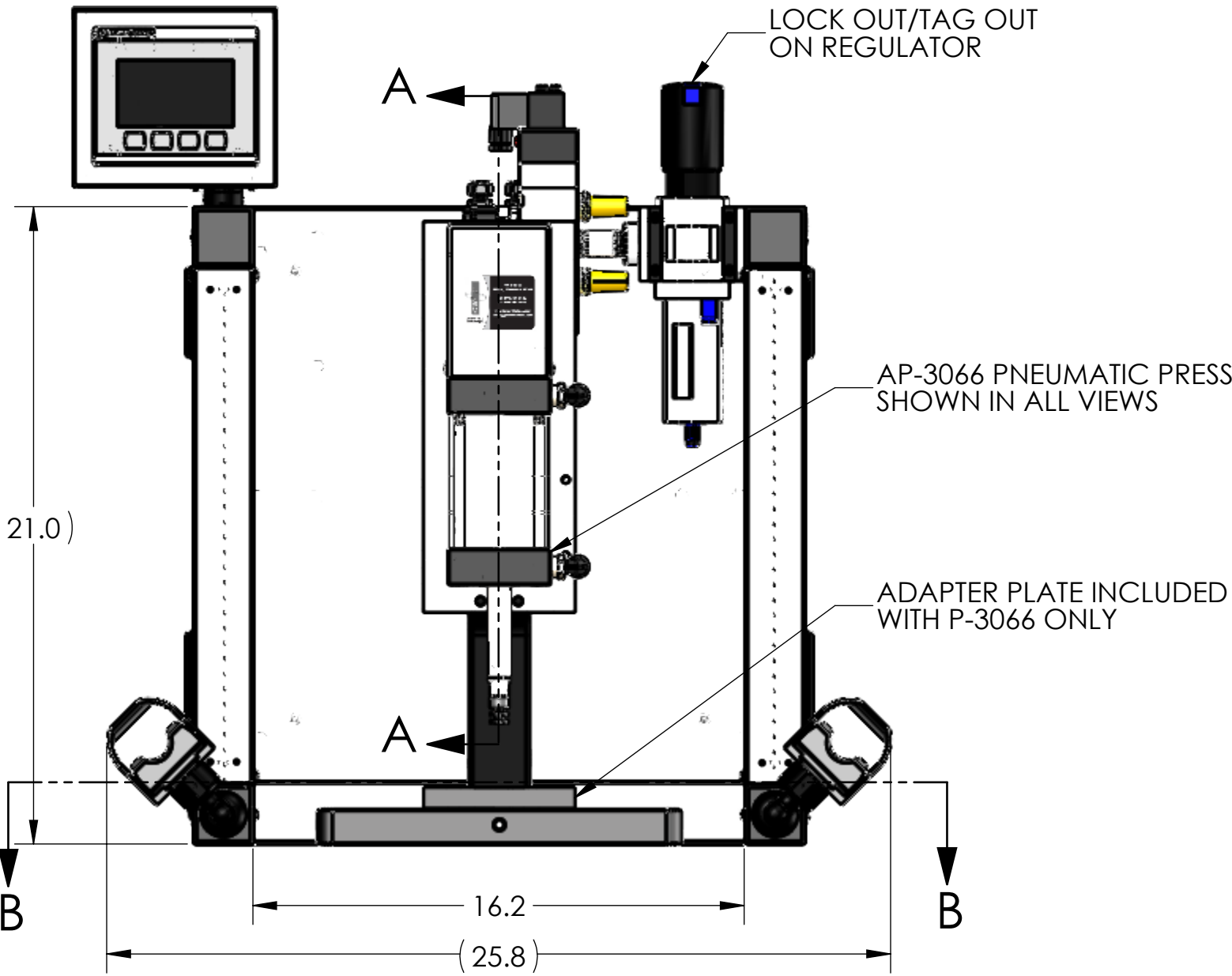
OPTIONAL TOOL ADAPTER:
FOR USE WITH DIE SETS
(1/2"-13 UNC ∇ 1.25)
(4) LENGTHS AVAILABLE



FRONT TUBES & WIRE MESH ARE REMOVABLE

STANDARD T-SLOT BASE
INCLUDED WITH ALL
3000 SERIES MODELS

FULLY ADJUSTABLE OPTO TOUCH BUTTONS



DETAIL D
SCALE 3 : 4

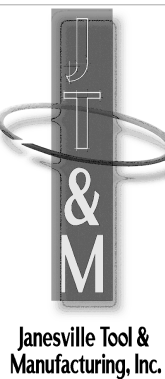
NOTES:

1. PRESS OPERATES ON LOW VOLTAGE (24V DC).
2. LED LIGHT COMES STANDARD.
3. OPTIONAL FORCE MONITORING SYSTEM AVAILABLE UPON REQUEST (NOT SHOWN).
4. OPTIONAL 500-15 ASSEMBLY BUSHING AVAILABLE UPON REQUEST (NOT SHOWN).
5. OPTIONAL RISER BLOCKS UP TO 8" HEIGHT AVAILABLE UPON REQUEST (NOT SHOWN).
RISER BLOCKS TALLER THAN 8" REQUIRE RELOCATION OF VALVE ASSEMBLY.
6. CYLINDER ROD SHOWN IN EXTENDED POSITION.
7. ALL CYLINDERS COME STANDARD WITH 3" OF STROKE.
LONGER CYLINDER STROKE LENGTHS AVAILABLE UPON REQUEST.
8. TOOL ADAPTER SHOWN DOES NOT COME STANDARD.
9. REMOVED GUARD IN RIGHT VIEW FOR CLARITY.

THIS DRAWING WAS PRINTED ON 3/4/2021

UNLESS OTHERWISE SPECIFIED:		
DIMENSIONS ARE IN INCHES		
TOLERANCES:		
FRACTIONAL \pm 0.15		
ANGULAR: MACH \pm 0.5 BEND \pm 0.5		
TWO PLACE DECIMAL \pm 0.01		
THREE PLACE DECIMAL \pm 0.005		
FOUR PLACE DECIMAL \pm 0.0005		
INTERPRET GEOMETRIC TOLERANCING PER: ASME Y14.5-1994		
MATERIAL		
FINISH		
DO NOT SCALE DRAWING		

NAME	DATE
RKM	3-4-21
CHECKED	
ENG APPR.	
MFG APPR.	
Q.A.	
COMMENTS:	



Janesville Tool & Manufacturing Inc. 3930 Enterprise Drive Janesville, WI 53546 Phone: 608-314-1620, Fax 608-314-1625		
TITLE: AP-3066 SINGLE STAGE		
SIZE C	DWG. NO. AP-3066-000-00	REV -
SCALE: 1:5 WEIGHT: 144.08 SHEET 1 OF 3		

PROPRIETARY AND CONFIDENTIAL
THE INFORMATION CONTAINED IN THIS
DRAWING IS THE SOLE PROPERTY OF
JANESVILLE TOOL & MANUFACTURING INC.
ANY REPRODUCTION IN PART OR AS A WHOLE
WITHOUT THE WRITTEN PERMISSION OF
JANESVILLE TOOL & MANUFACTURING INC. IS
PROHIBITED.

BREAK ALL SHARP
EDGES