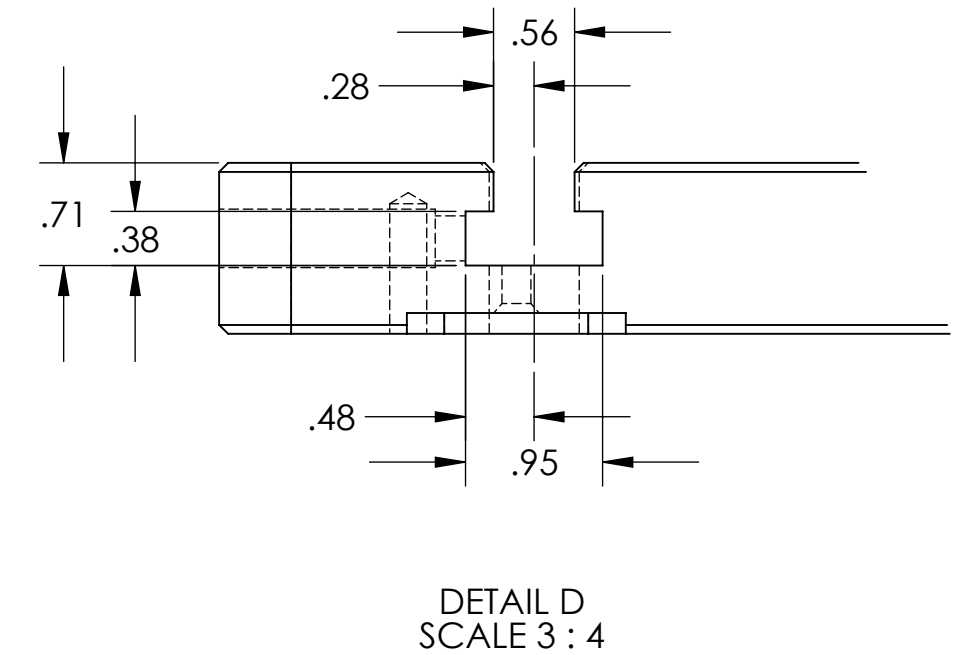
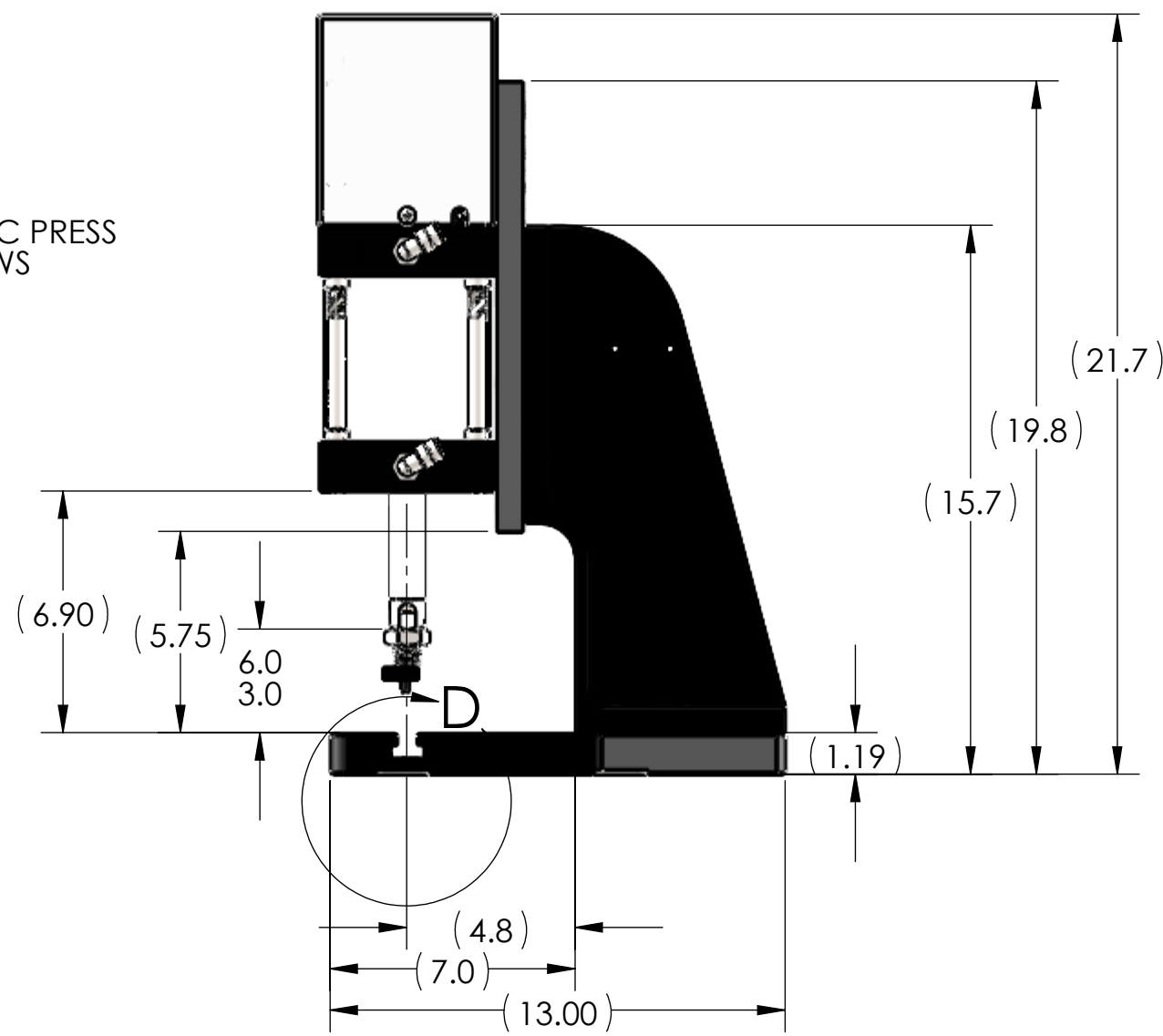
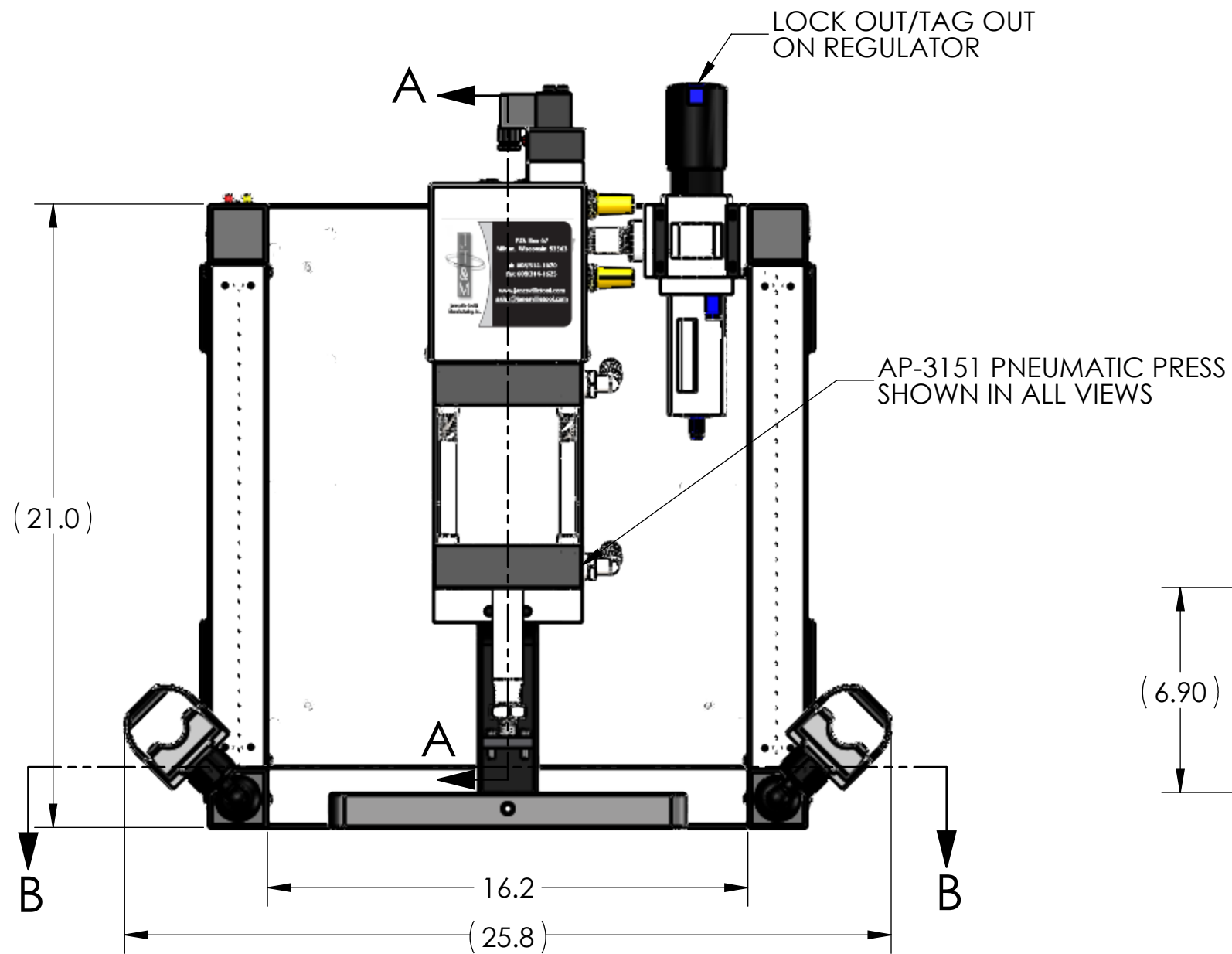
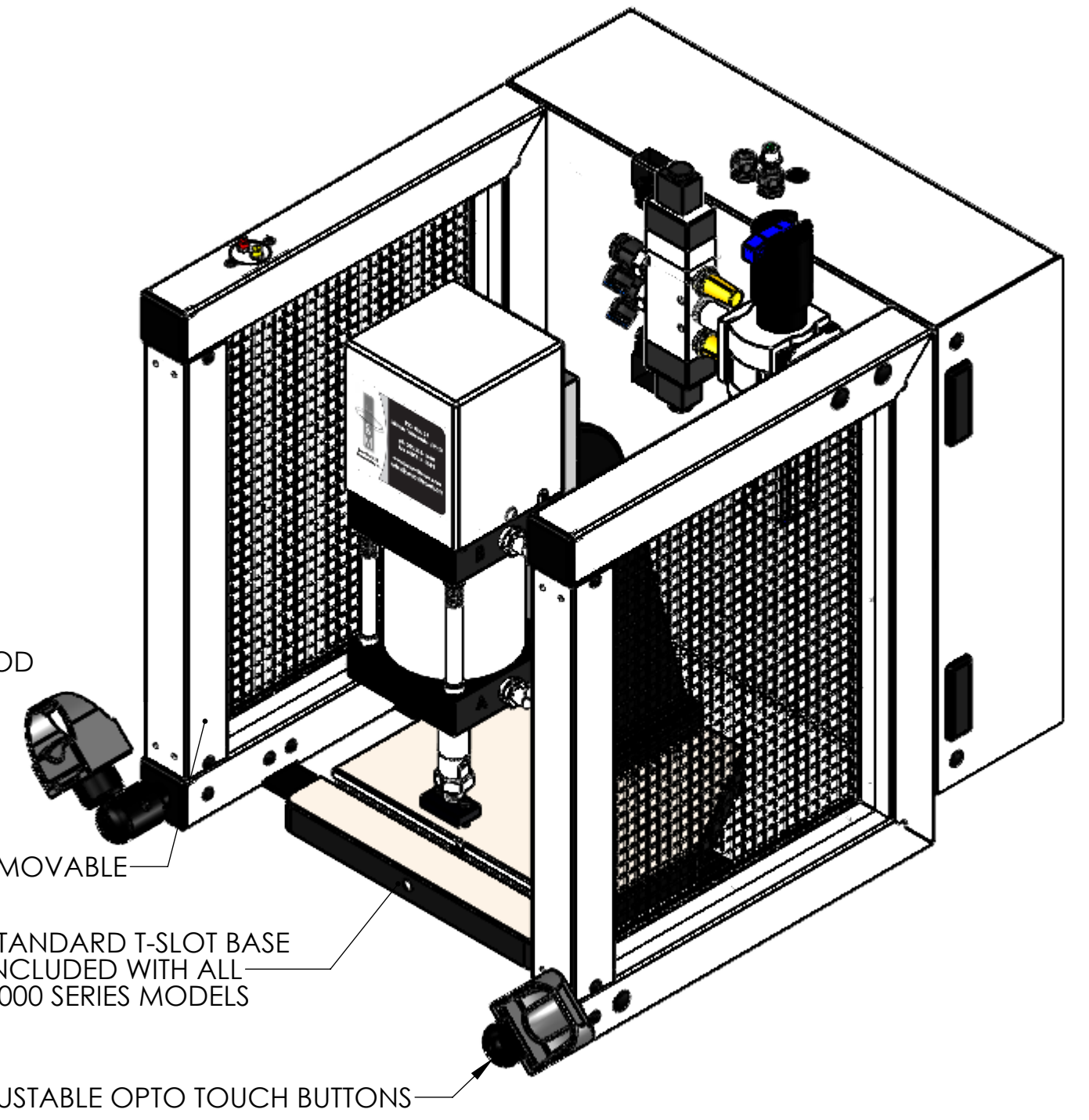
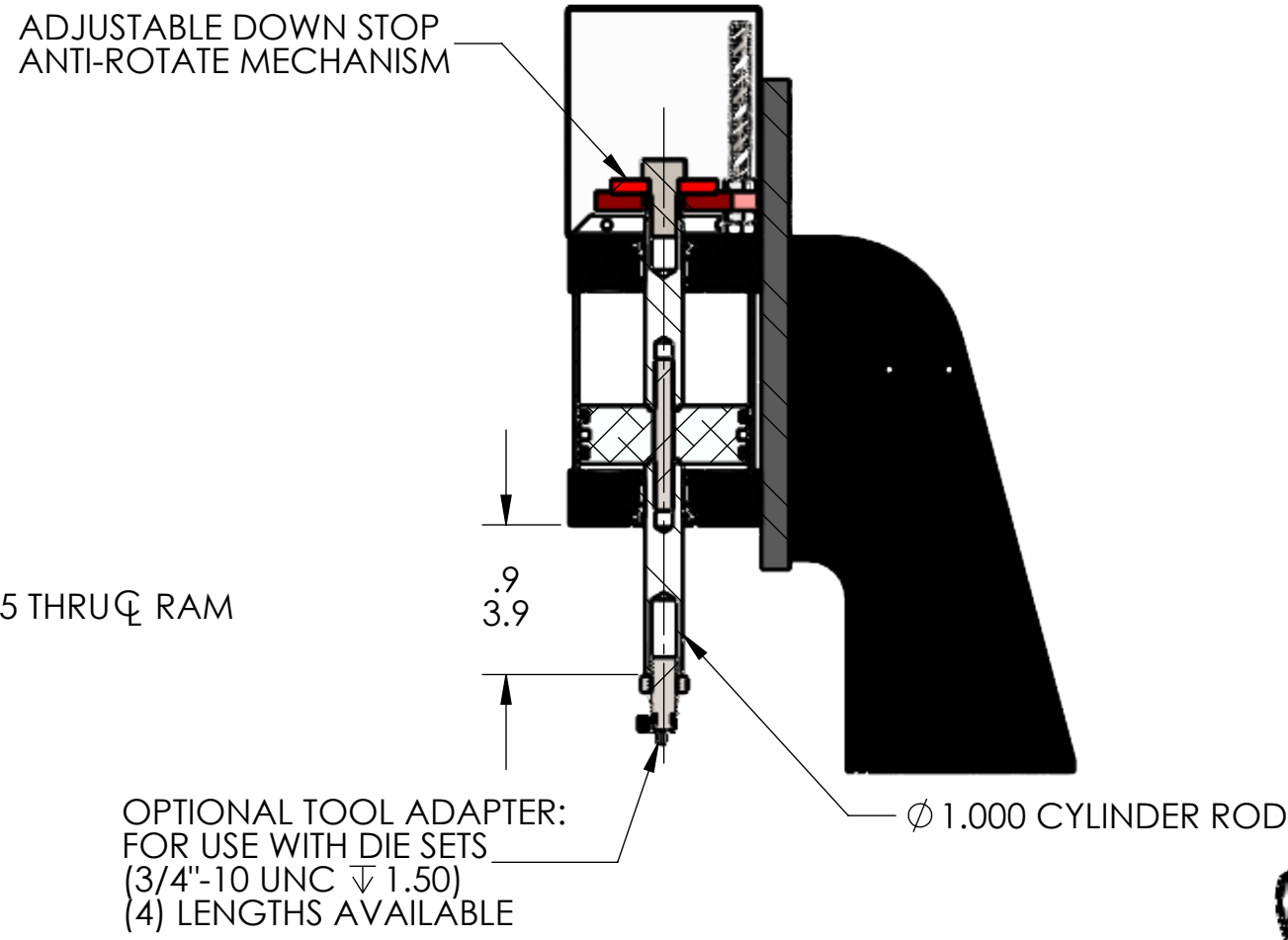
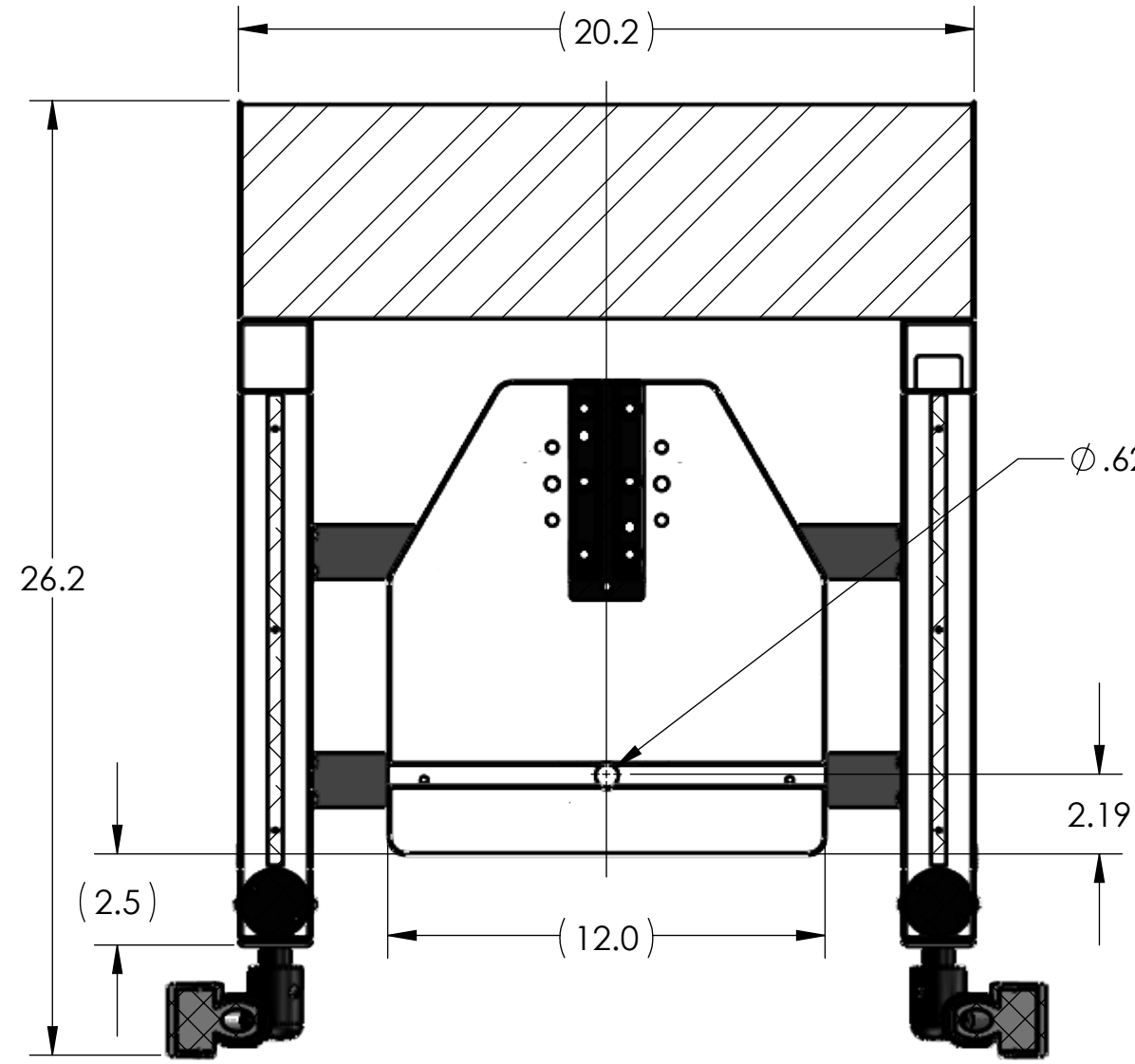


REGULATED PRESSURE	FORCE
60 PSI	906
80 PSI	1208
100 PSI	1510



NOTES:

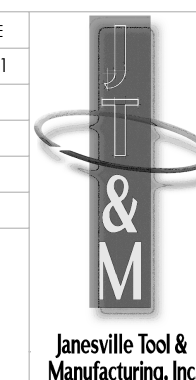
- PRESS OPERATES ON LOW VOLTAGE (24V DC).
- LED LIGHT COMES STANDARD.
- OPTIONAL FORCE MONITORING SYSTEM AVAILABLE UPON REQUEST (NOT SHOWN).
- OPTIONAL 500-15 ASSEMBLY BUSHING AVAILABLE UPON REQUEST (NOT SHOWN).
- OPTIONAL RISER BLOCKS UP TO 5" HEIGHT AVAILABLE UPON REQUEST (NOT SHOWN). RISER BLOCKS TALLER THAN 5" REQUIRE RELOCATION OF VALVE ASSEMBLY.
- CYLINDER ROD SHOWN IN EXTENDED POSITION.
- ALL CYLINDERS COME STANDARD WITH 3" OF STROKE. LONGER CYLINDER STROKE LENGTHS AVAILABLE UPON REQUEST.
- TOOL ADAPTER SHOWN DOES NOT COME STANDARD.
- REMOVED GUARD IN RIGHT VIEW FOR CLARITY.

PROPRIETARY AND CONFIDENTIAL
THE INFORMATION CONTAINED IN THIS DRAWING IS THE SOLE PROPERTY OF JANESVILLE TOOL & MANUFACTURING INC. ANY REPRODUCTION IN PART OR AS A WHOLE WITHOUT THE WRITTEN PERMISSION OF JANESVILLE TOOL & MANUFACTURING INC. IS PROHIBITED.

UNLESS OTHERWISE SPECIFIED:	
DIMENSIONS ARE IN INCHES	TOLERANCES:
FRACTIONAL: ± 0.15	ANGULAR: MACH ± 0.5 BEND ± 0.5
TWO PLACE DECIMAL ± 0.01	THREE PLACE DECIMAL ± 0.005
FOUR PLACE DECIMAL ± 0.0005	
INTERPRET GEOMETRIC TOLERANCING PER: ASME Y14.5-1994	
MATERIAL	SEE DETAILS
FINISH	SEE DETAILS
	DO NOT SCALE DRAWING

THIS DRAWING WAS PRINTED ON 3/5/2021

NAME	DATE
DRAWN RKM	3-4-21
CHECKED	
ENG APPR.	
MFG APPR.	
Q.A.	
COMMENTS:	



Janesville Tool & Manufacturing Inc.
3930 Enterprise Drive
Janesville, WI 53546
Phone: 608-314-1620, Fax 608-314-1625

TITLE:
AP-3151 SINGLE STAGE

SIZE	DWG. NO.	REV
C	AP-3151-000-00	-

SCALE: 1:5 | WEIGHT: 149.39 | SHEET 2 OF 3