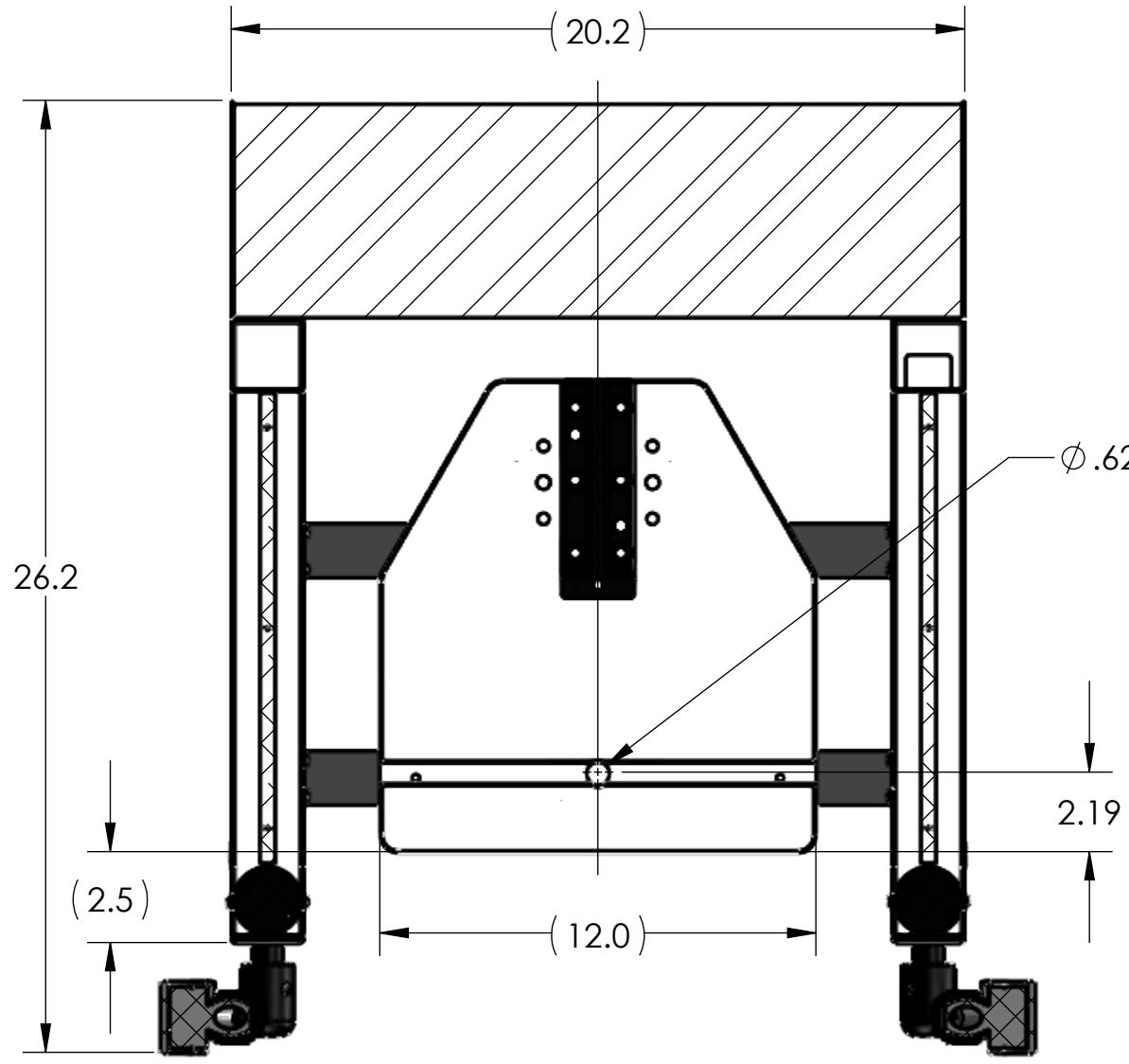
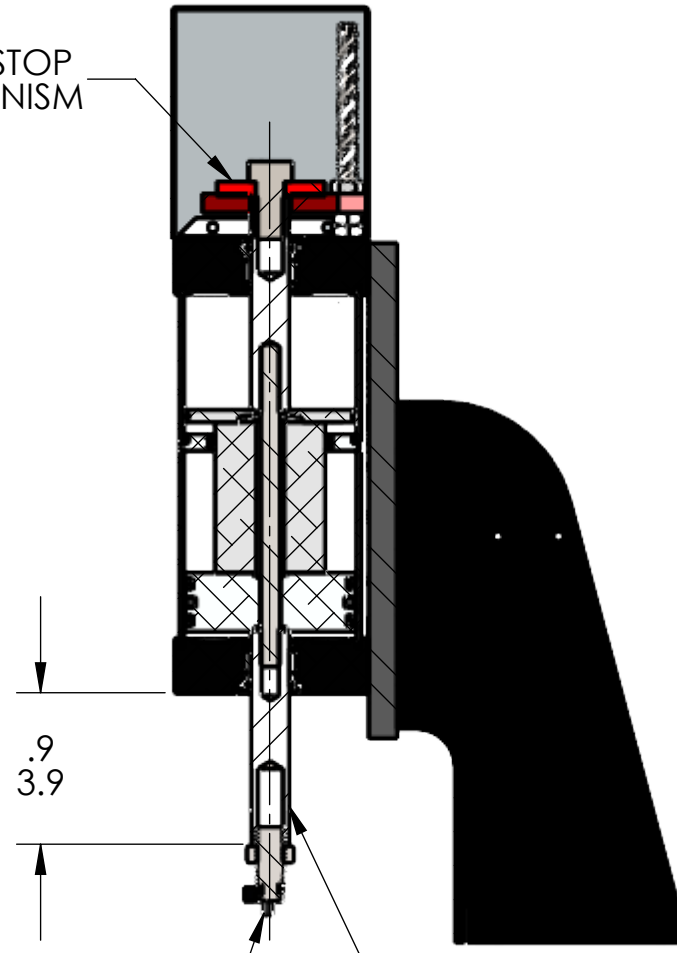


REGULATED PRESSURE	FORCE
60 PSI	1400
80 PSI	1880
100 PSI	2350



ADJUSTABLE DOWN STOP  
ANTI-ROTATE MECHANISM

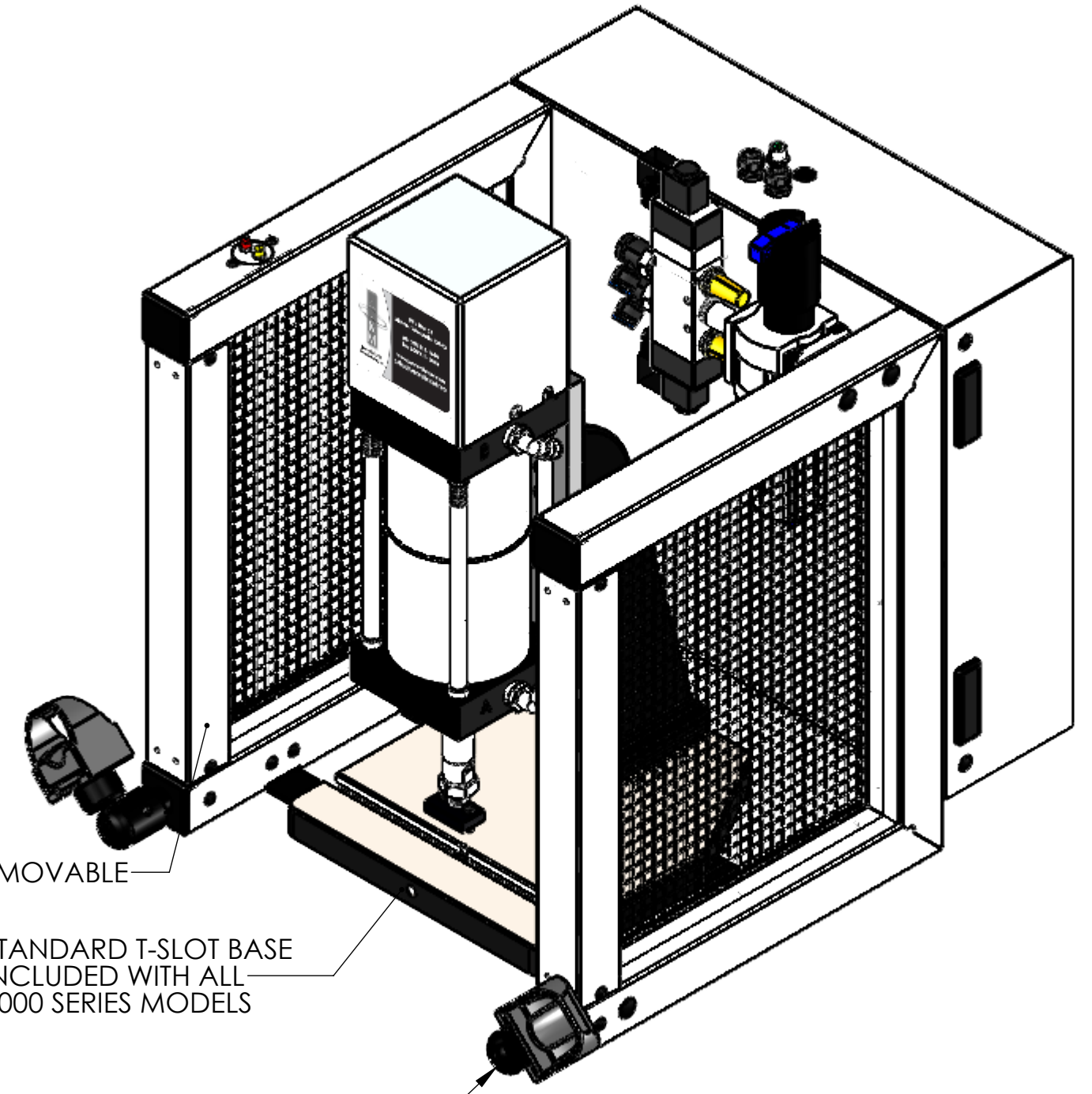


OPTIONAL TOOL ADAPTER:  
FOR USE WITH DIE SETS  
(3/4"-10 UNC ∇ 1.50)  
(4) LENGTHS AVAILABLE

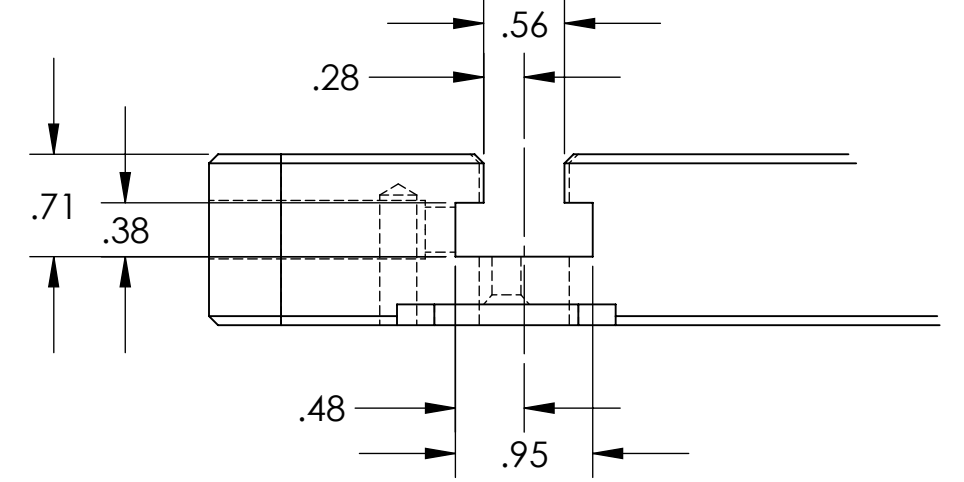
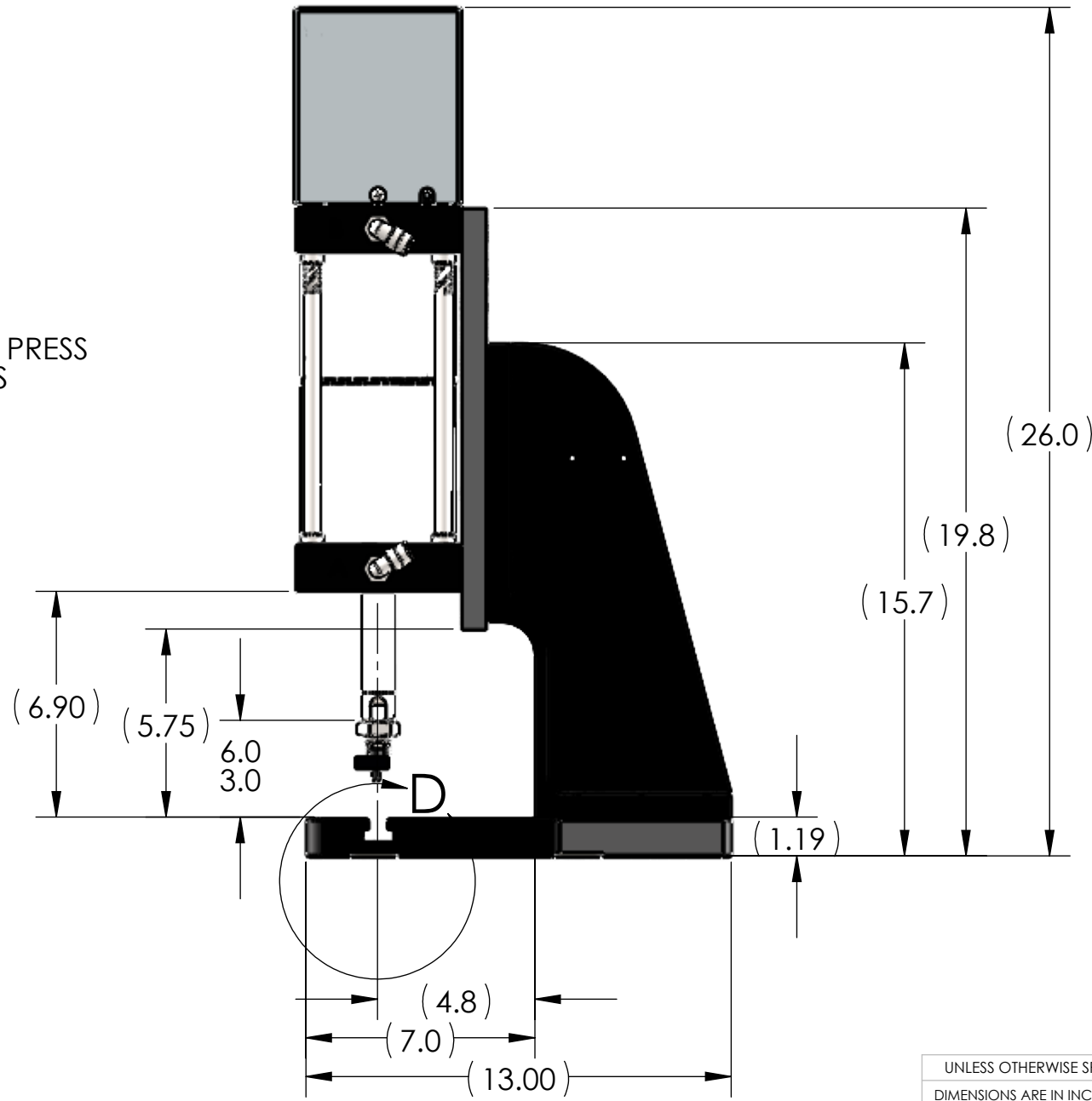
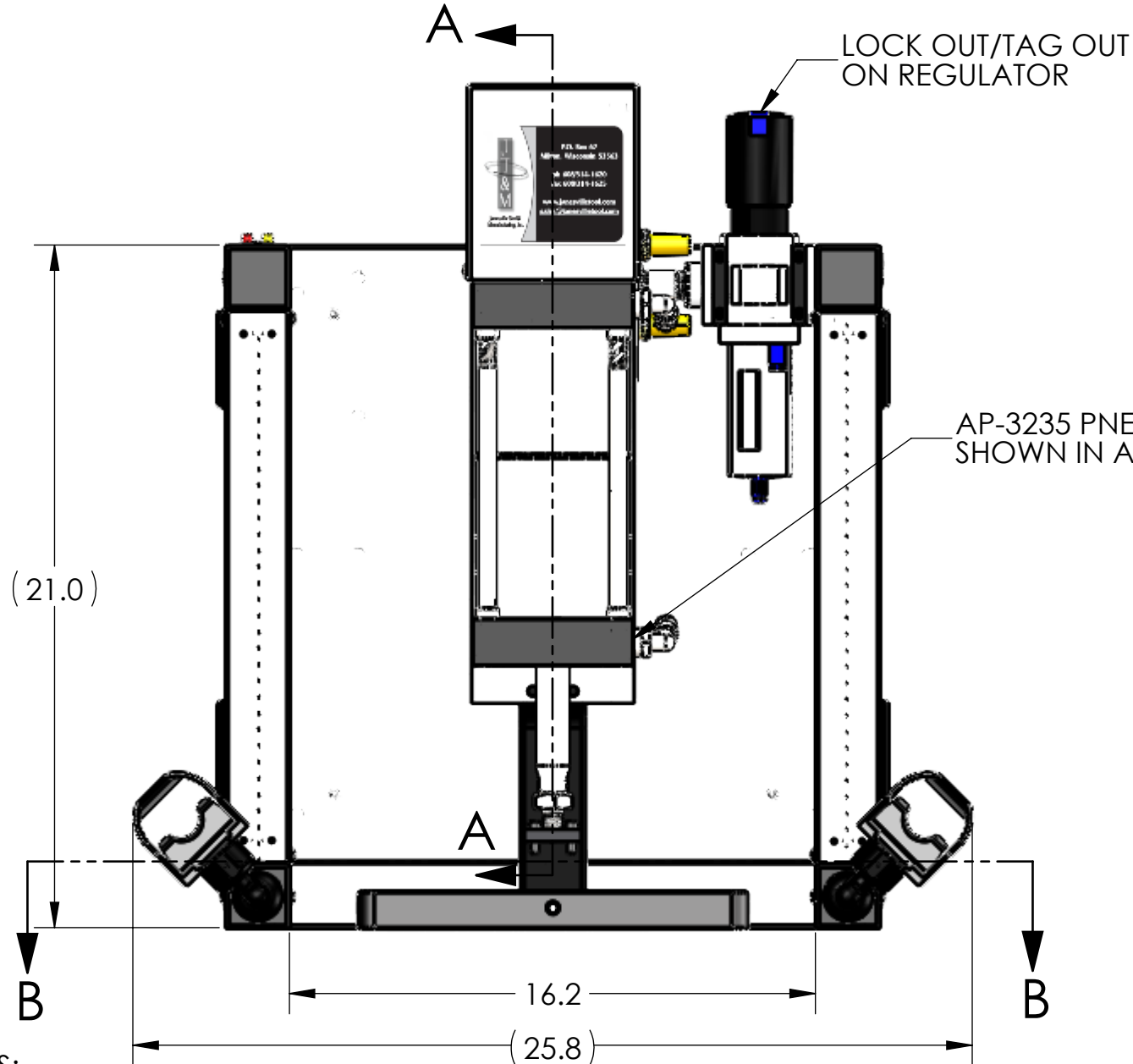
Ø 1.000 CYLINDER ROD

FRONT TUBES & WIRE MESH ARE REMOVABLE

STANDARD T-SLOT BASE  
INCLUDED WITH ALL  
3000 SERIES MODELS



FULLY ADJUSTABLE OPTO TOUCH BUTTONS



DETAIL D  
SCALE 3 : 4

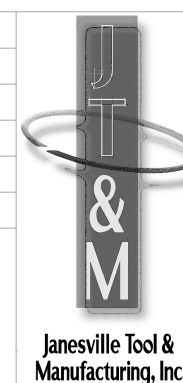
NOTES:

- PRESS OPERATES ON LOW VOLTAGE (24V DC).
- LED LIGHT COMES STANDARD.
- OPTIONAL FORCE MONITORING SYSTEM AVAILABLE UPON REQUEST (NOT SHOWN).
- OPTIONAL 500-15 ASSEMBLY BUSHING AVAILABLE UPON REQUEST (NOT SHOWN).
- OPTIONAL RISER BLOCKS UP TO 5" HEIGHT AVAILABLE UPON REQUEST (NOT SHOWN).  
RISER BLOCKS TALLER THAN 5" REQUIRE RELOCATION OF VALVE ASSEMBLY.
- CYLINDER ROD SHOWN IN EXTENDED POSITION.
- ALL CYLINDERS COME STANDARD WITH 3" OF STROKE.  
LONGER CYLINDER STROKE LENGTHS AVAILABLE UPON REQUEST.
- TOOL ADAPTER SHOWN DOES NOT COME STANDARD.
- REMOVED GUARD IN RIGHT VIEW FOR CLARITY.

THIS DRAWING WAS PRINTED ON 3/5/2021

UNLESS OTHERWISE SPECIFIED:		NAME	DATE
DIMENSIONS ARE IN INCHES		DRAWN	RKM 3-4-21
TOLERANCES:		CHECKED	
FRACTIONAL: ± 0.15		ENG APPR.	
ANGULAR: MACH ± 0.5 BEND ± 0.5		MFG APPR.	
TWO PLACE DECIMAL ± 0.01		Q.A.	
THREE PLACE DECIMAL ± 0.005		COMMENTS:	
FOUR PLACE DECIMAL ± 0.0005			
INTERPRET GEOMETRIC TOLERANCING PER: ASME Y14.5-1994			
MATERIAL			
SEE DETAILS			
FINISH			
SEE DETAILS			
DO NOT SCALE DRAWING			

NAME	DATE
DRAWN	RKM 3-4-21
CHECKED	
ENG APPR.	
MFG APPR.	
Q.A.	
COMMENTS:	



**Janesville Tool & Manufacturing Inc.**  
3930 Enterprise Drive  
Janesville, WI 53546  
Phone: 608-314-1620, Fax 608-314-1625

TITLE:  
**AP-3235 TWO-STAGE**

SIZE	DWG. NO.	REV
<b>C</b>	<b>AP-3235-000-00</b>	-

SCALE: 1:5 WEIGHT: 154.48 SHEET 3 OF 3

**PROPRIETARY AND CONFIDENTIAL**  
THE INFORMATION CONTAINED IN THIS DRAWING IS THE SOLE PROPERTY OF JANESVILLE TOOL & MANUFACTURING INC. ANY REPRODUCTION IN PART OR AS A WHOLE WITHOUT THE WRITTEN PERMISSION OF JANESVILLE TOOL & MANUFACTURING INC. IS PROHIBITED.