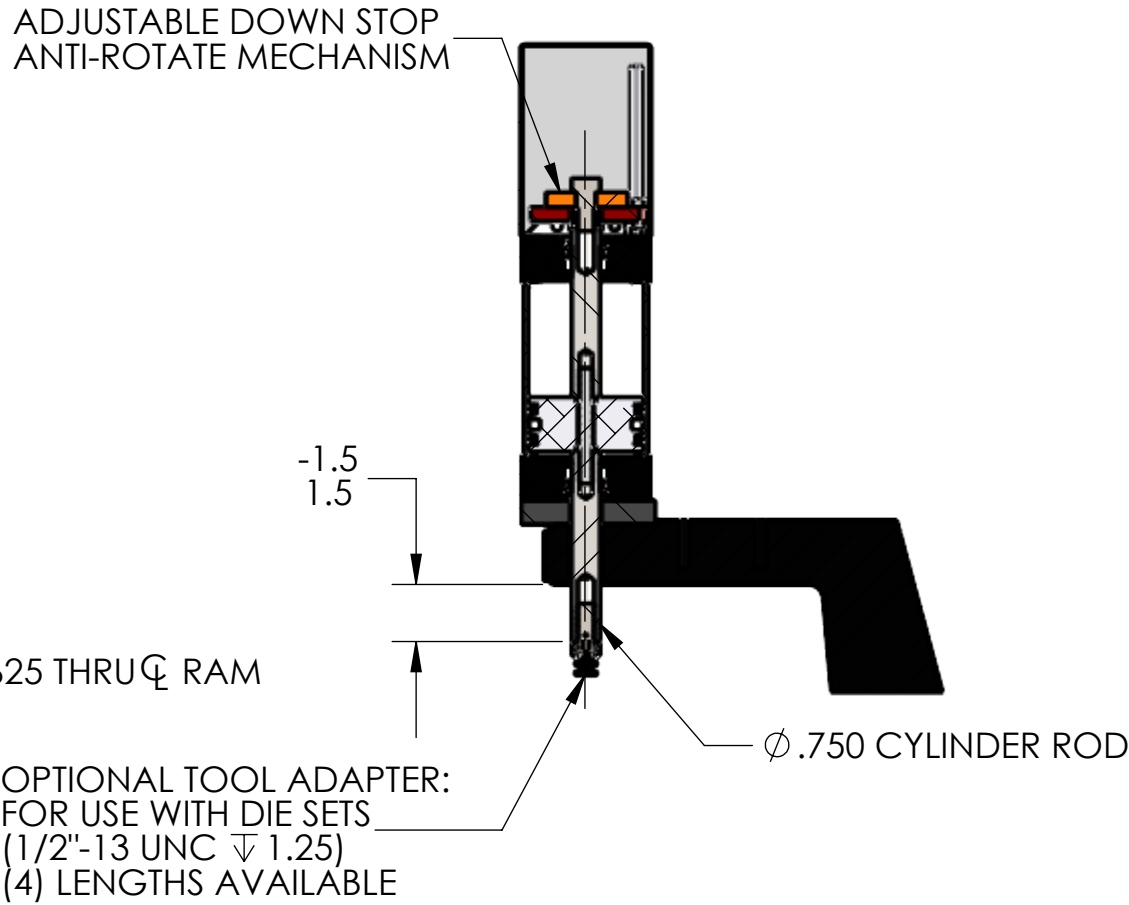
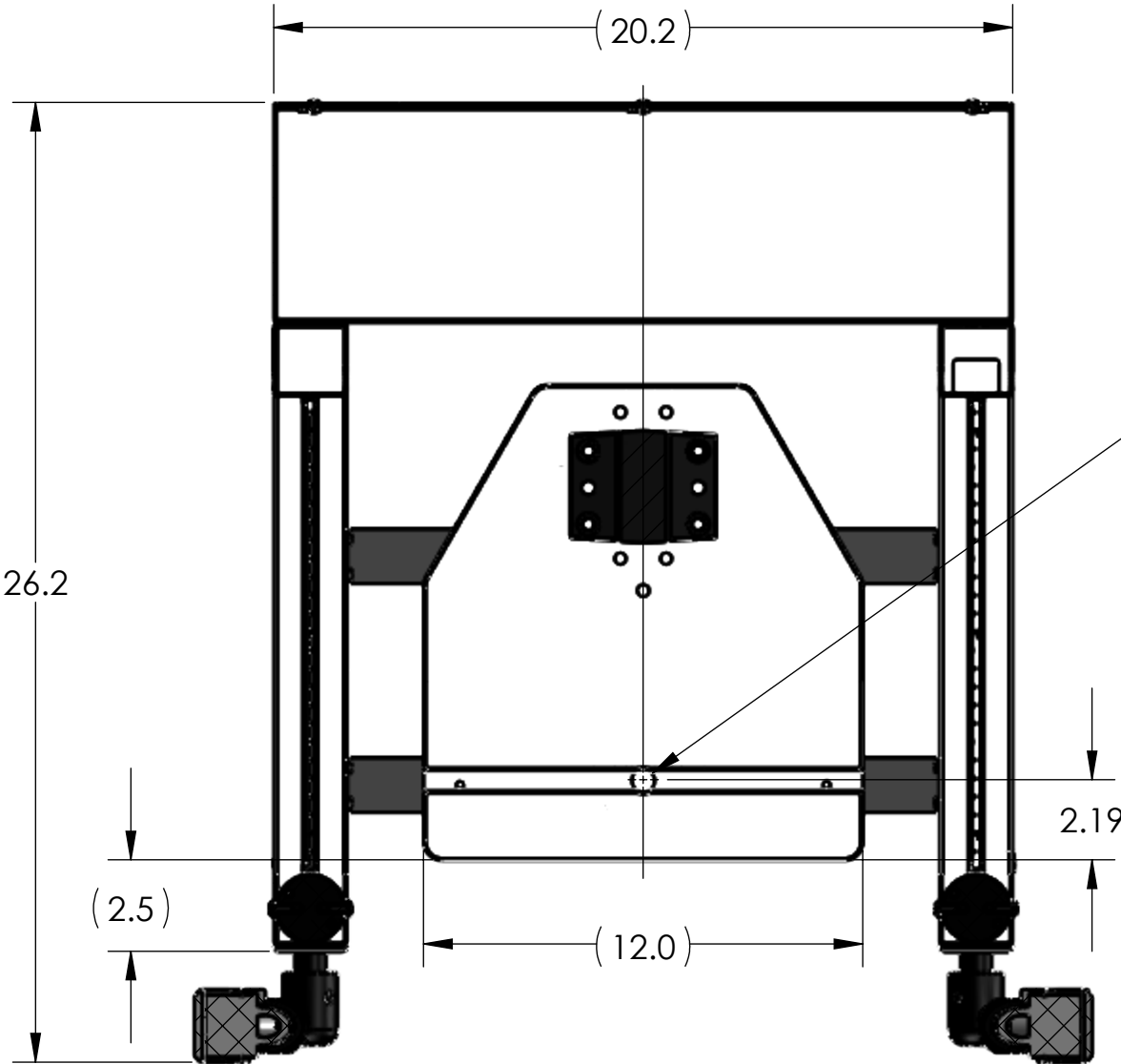


REGULATED PRESSURE	FORCE
60 PSI	398
80 PSI	530
100 PSI	663

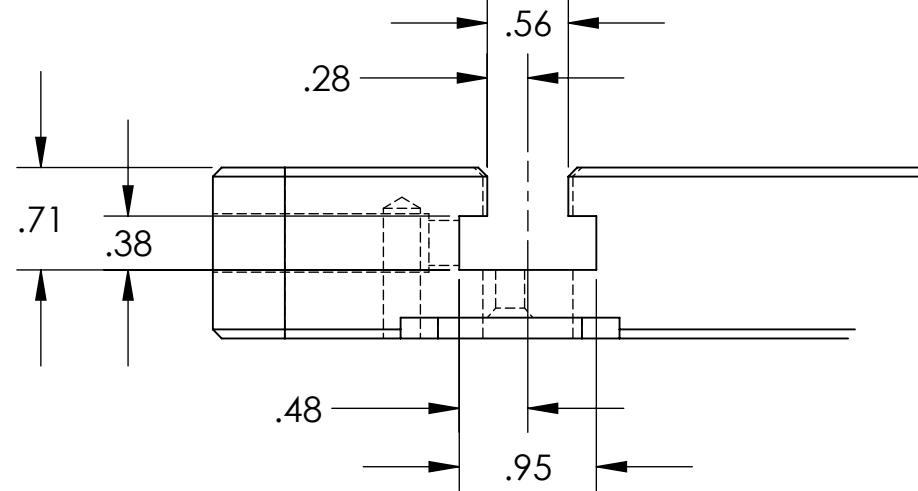
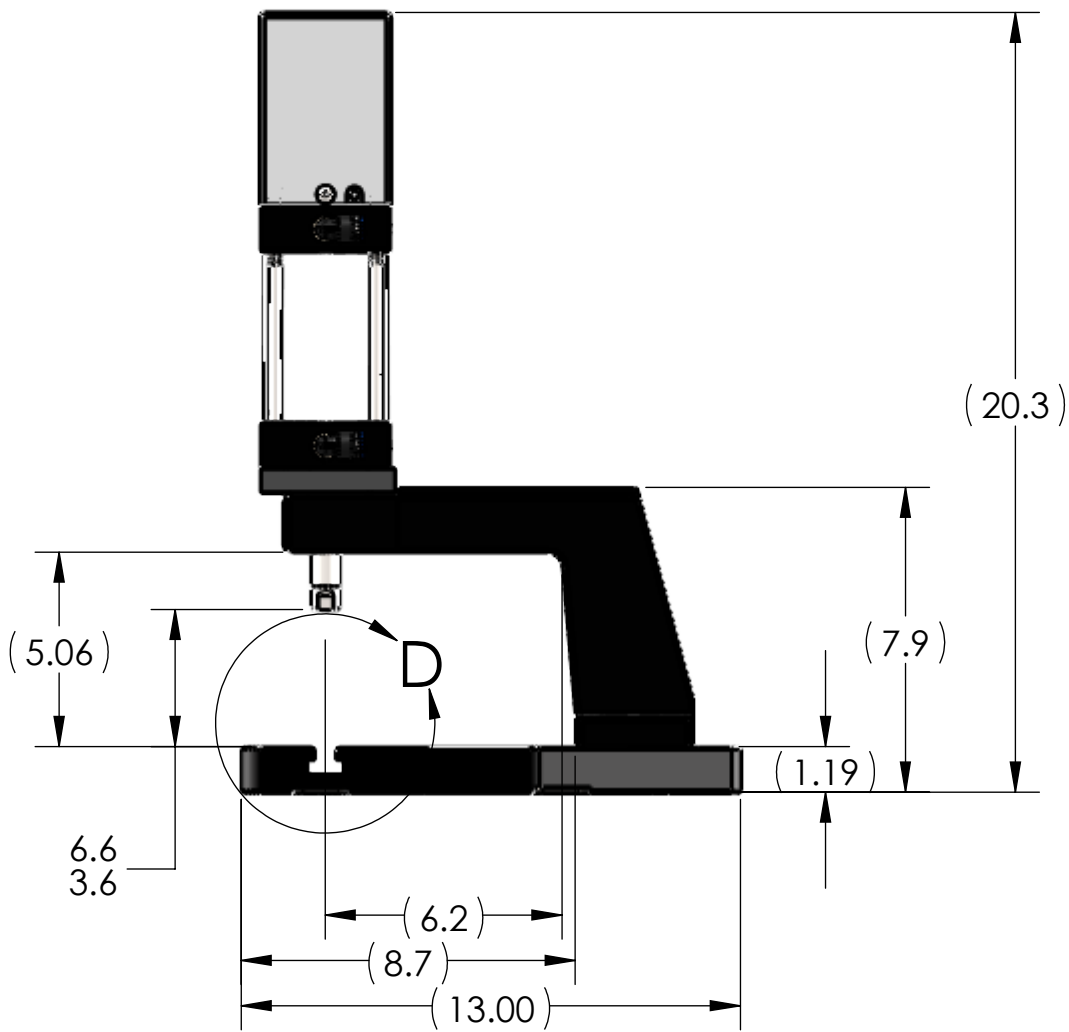
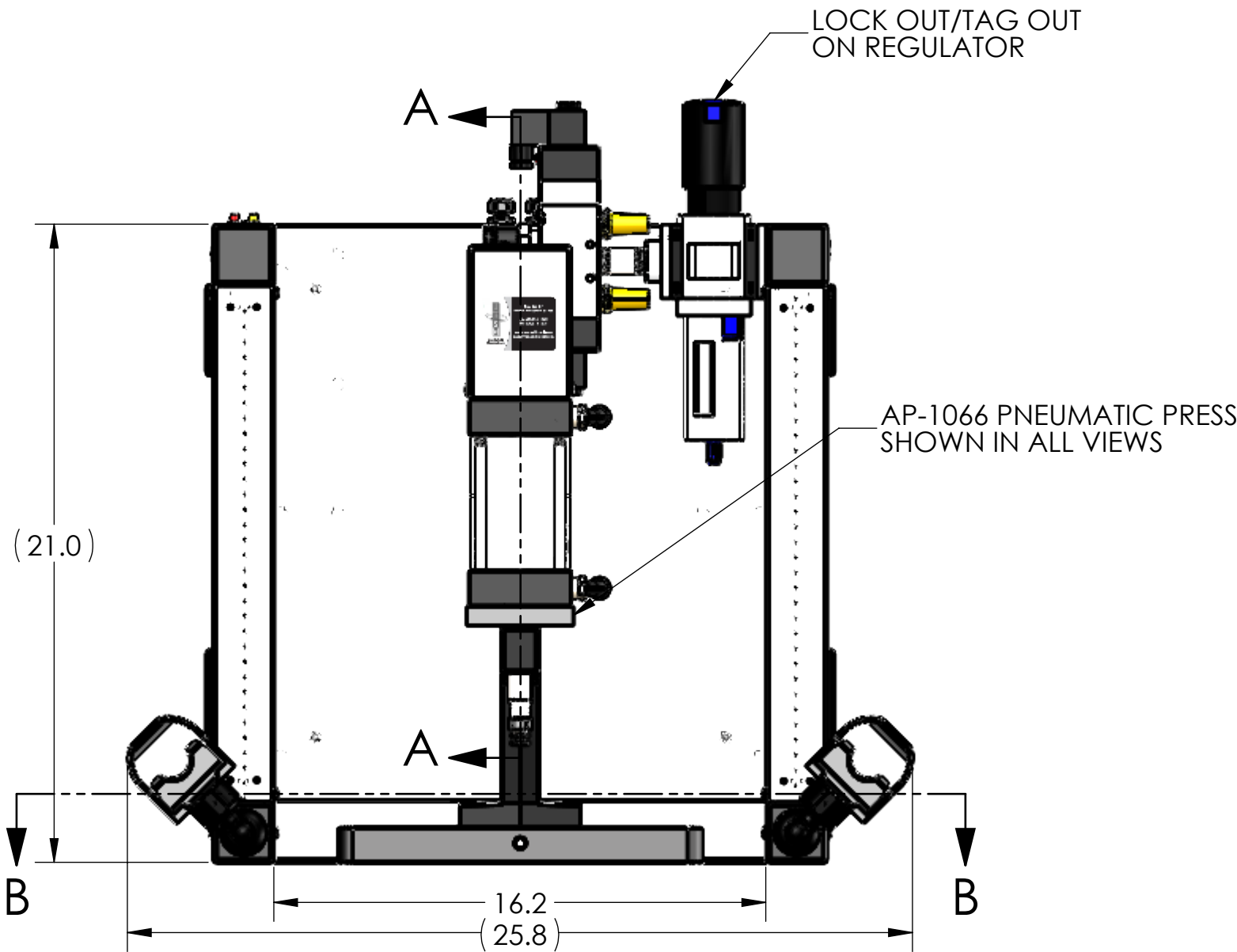
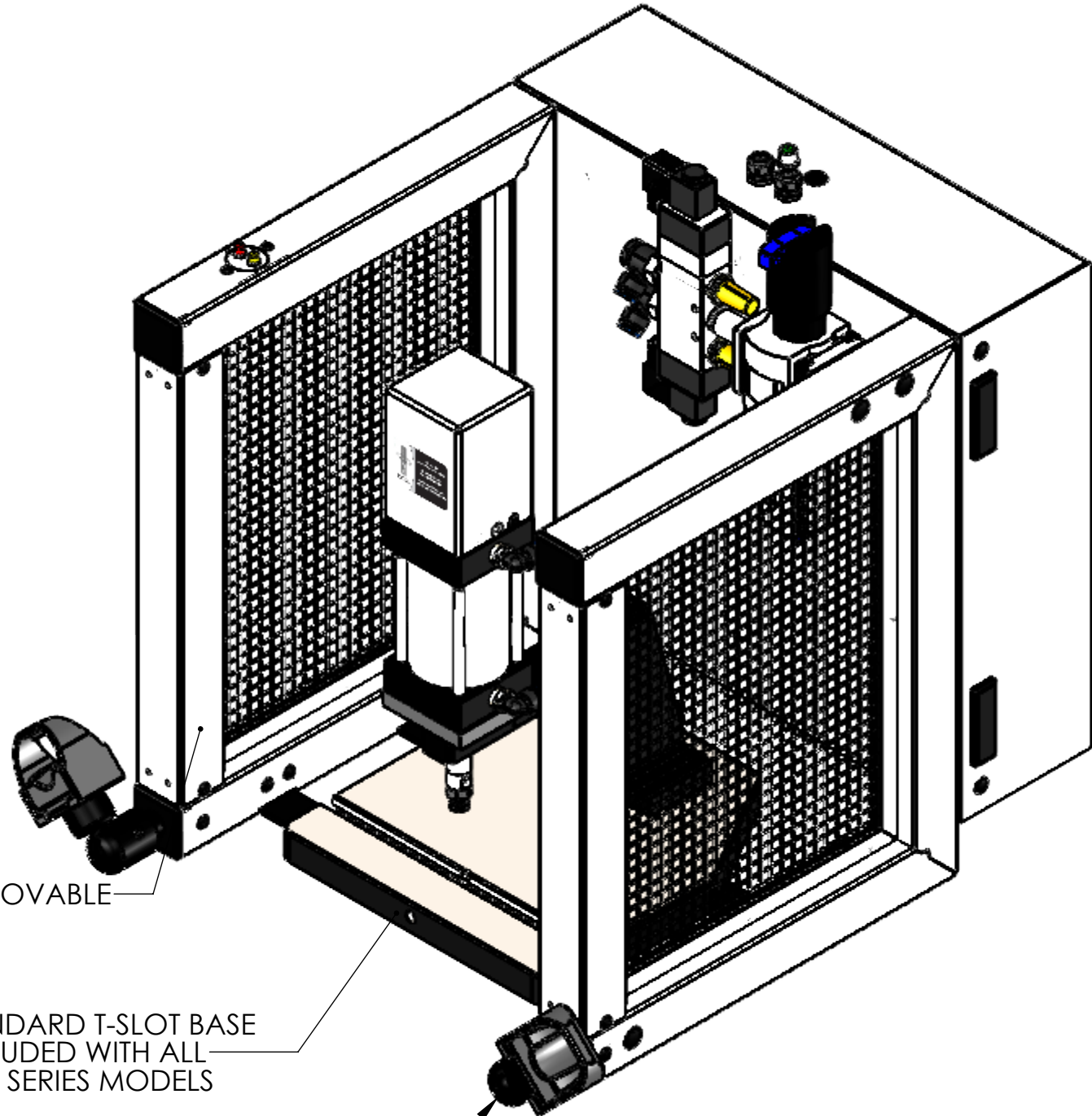
F  
E  
D  
C  
B  
A



FRONT TUBES & WIRE MESH ARE REMOVABLE

STANDARD T-SLOT BASE INCLUDED WITH ALL 1000 SERIES MODELS

FULLY ADJUSTABLE OPTO TOUCH BUTTONS



DETAIL D  
SCALE 3 : 4

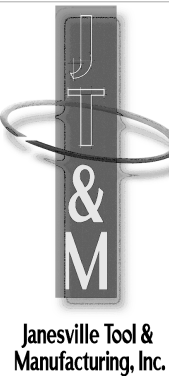
NOTES:

- PRESS OPERATES ON LOW VOLTAGE (24V DC).
- LED LIGHT COMES STANDARD.
- OPTIONAL FORCE MONITORING SYSTEM AVAILABLE UPON REQUEST (NOT SHOWN).
- OPTIONAL 500-15 ASSEMBLY BUSHING AVAILABLE UPON REQUEST (NOT SHOWN).
- OPTIONAL RISER BLOCKS AVAILABLE UPON REQUEST (NOT SHOWN).
- CYLINDER ROD SHOWN IN EXTENDED POSITION.
- ALL CYLINDERS COME STANDARD WITH 3" OF STROKE.  
LONGER CYLINDER STROKE LENGTHS AVAILABLE UPON REQUEST.
- TOOL ADAPTER SHOWN DOES NOT COME STANDARD.
- REMOVED GUARD IN RIGHT VIEW FOR CLARITY.

THIS DRAWING WAS PRINTED ON 3/4/2021

UNLESS OTHERWISE SPECIFIED:		
DIMENSIONS ARE IN INCHES		
TOLERANCES:		
FRACTIONAL: ± 0.15		
ANGULAR: MACH ± 0.5 BEND ± 0.5		
TWO PLACE DECIMAL ± 0.01		
THREE PLACE DECIMAL ± 0.005		
FOUR PLACE DECIMAL ± 0.0005		
INTERPRET GEOMETRIC TOLERANCING PER: ASME Y14.5-1994		
MATERIAL	SEE DETAILS	
FINISH	SEE DETAILS	
DO NOT SCALE DRAWING		

NAME	DATE
RKM	1/6/21
CHECKED	
ENG APPR.	
MFG APPR.	
Q.A.	
COMMENTS:	
BREAK ALL SHARP EDGES	



<b>Janesville Tool &amp; Manufacturing Inc.</b> 3930 Enterprise Drive Janesville, WI 53546 Phone: 608-314-1620, Fax 608-314-1625		
TITLE: <b>AP-1066 SINGLE STAGE</b>		
SIZE <b>C</b>	DWG. NO. <b>AP-1066-000-00</b>	REV <b>-</b>
SCALE: 1:5 WEIGHT: 124.72 SHEET 2 OF 2		

PROPRIETARY AND CONFIDENTIAL  
THE INFORMATION CONTAINED IN THIS DRAWING IS THE SOLE PROPERTY OF JANESVILLE TOOL & MANUFACTURING, INC. ANY REPRODUCTION IN PART OR AS A WHOLE WITHOUT THE WRITTEN PERMISSION OF JANESVILLE TOOL & MANUFACTURING, INC. IS PROHIBITED.