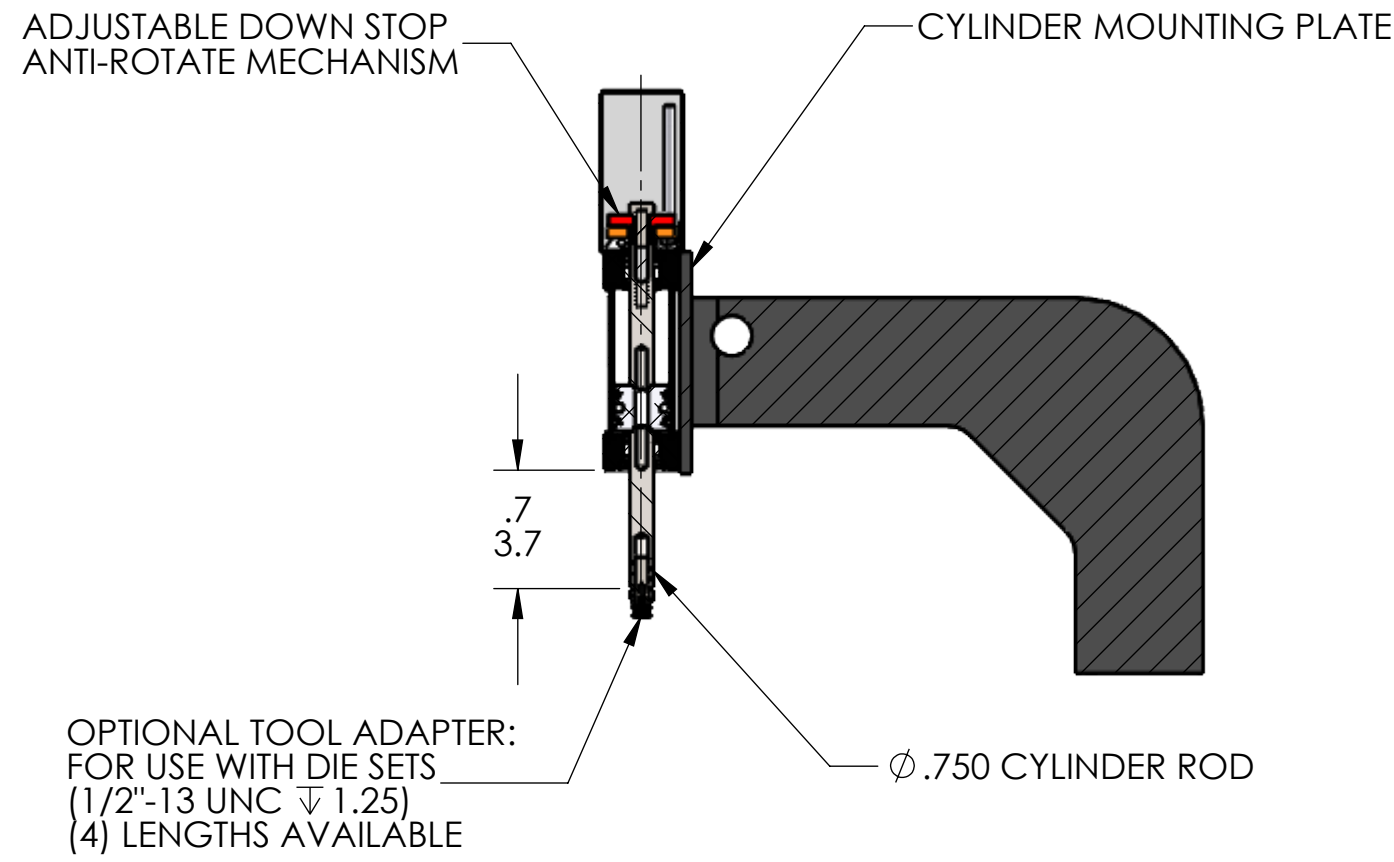
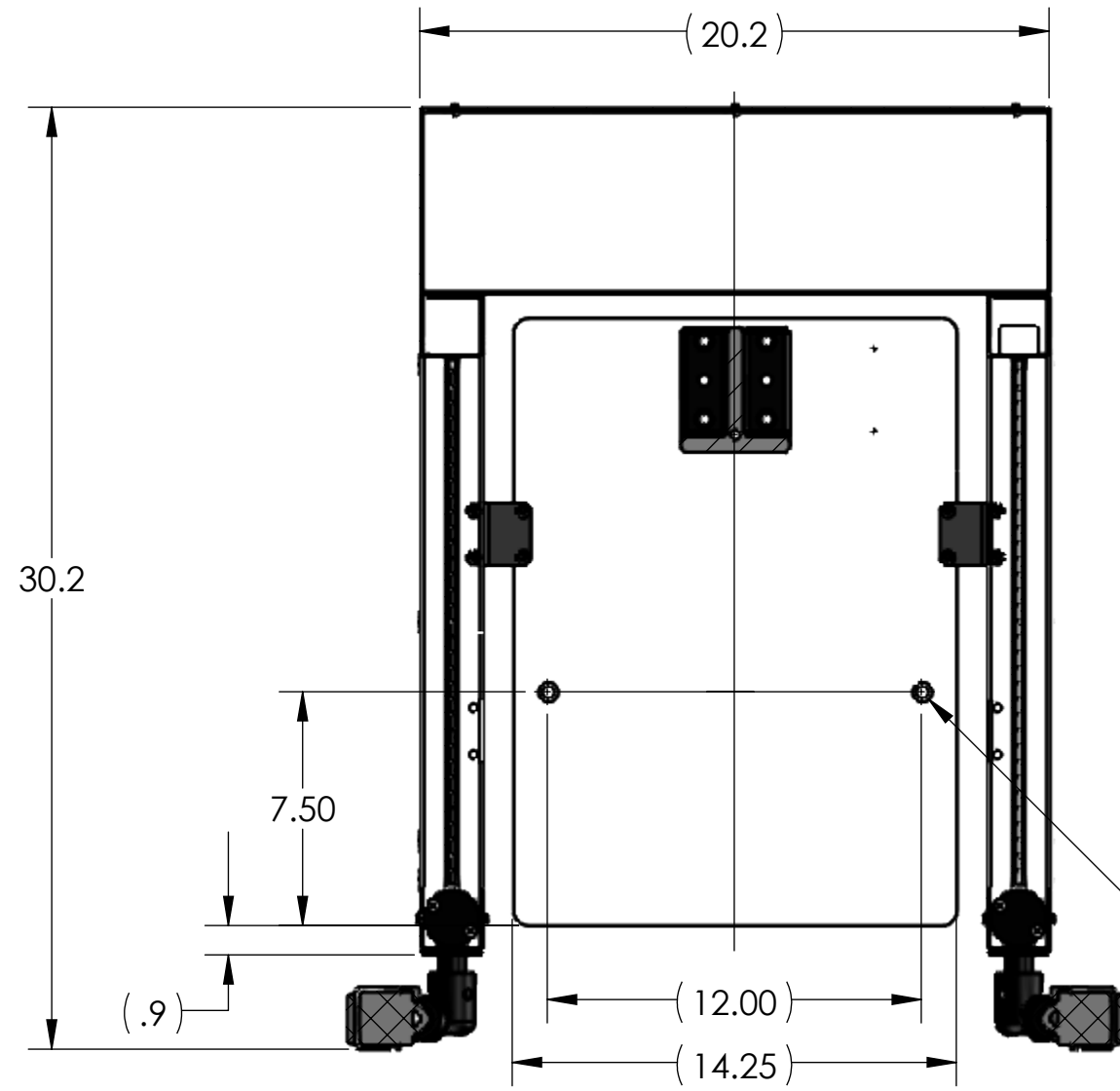
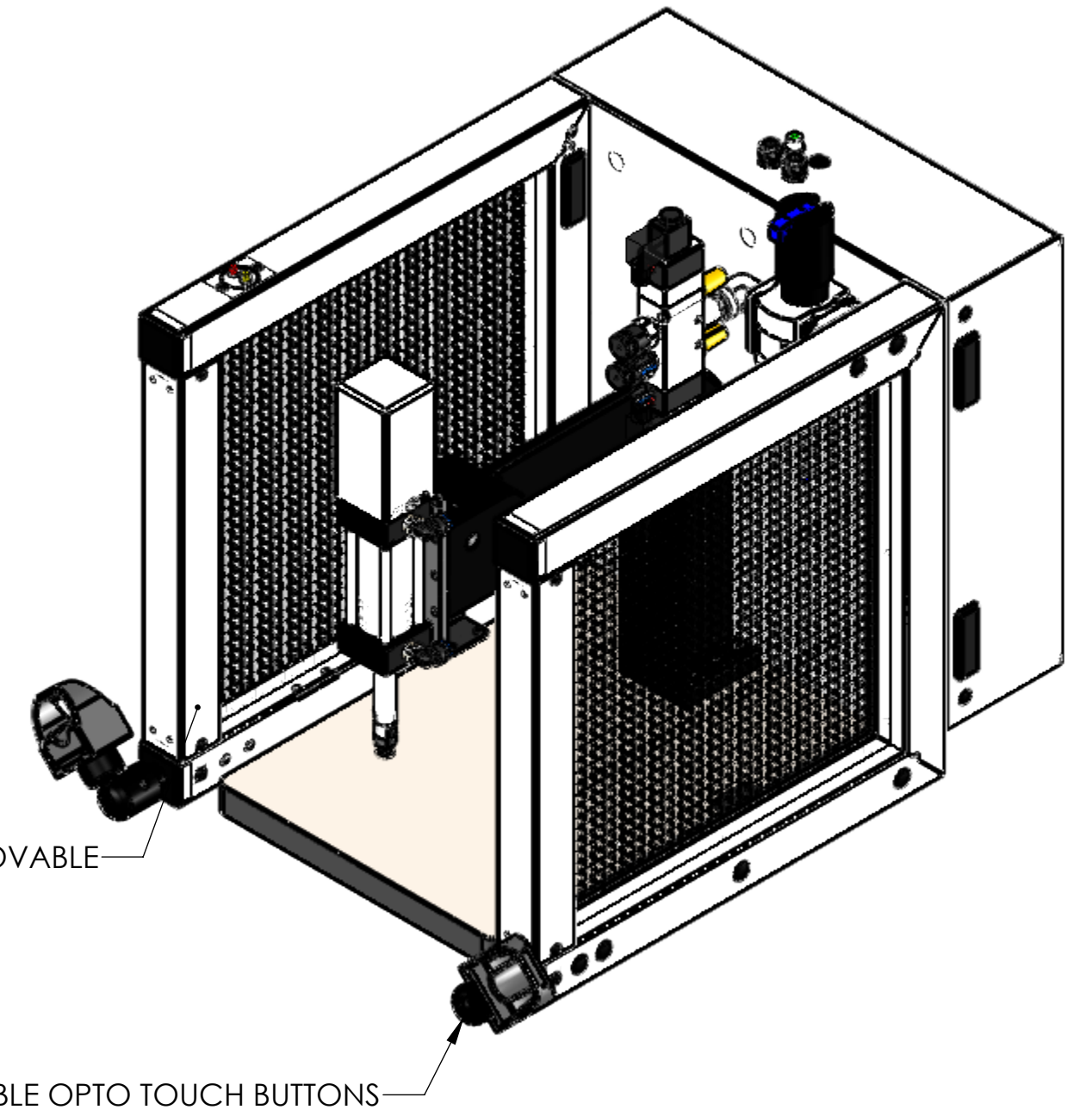


REGULATED PRESSURE	FORCE
60 PSI	118
80 PSI	157
100 PSI	196



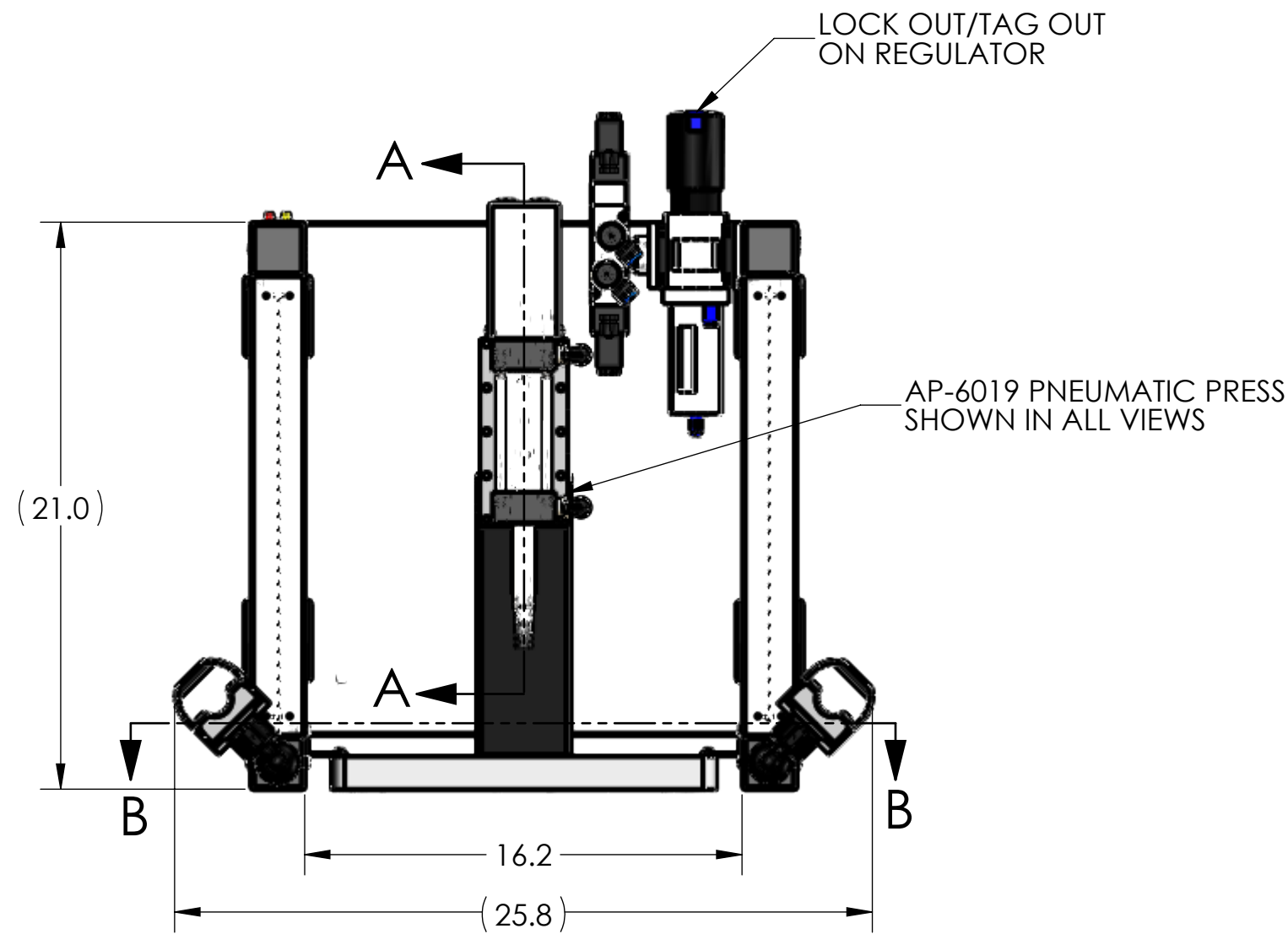
OPTIONAL TOOL ADAPTER:
FOR USE WITH DIE SETS
(1/2"-13 UNC ∇ 1.25)
(4) LENGTHS AVAILABLE

2X ϕ .406 THRU
 \square ϕ .625 ∇ .425



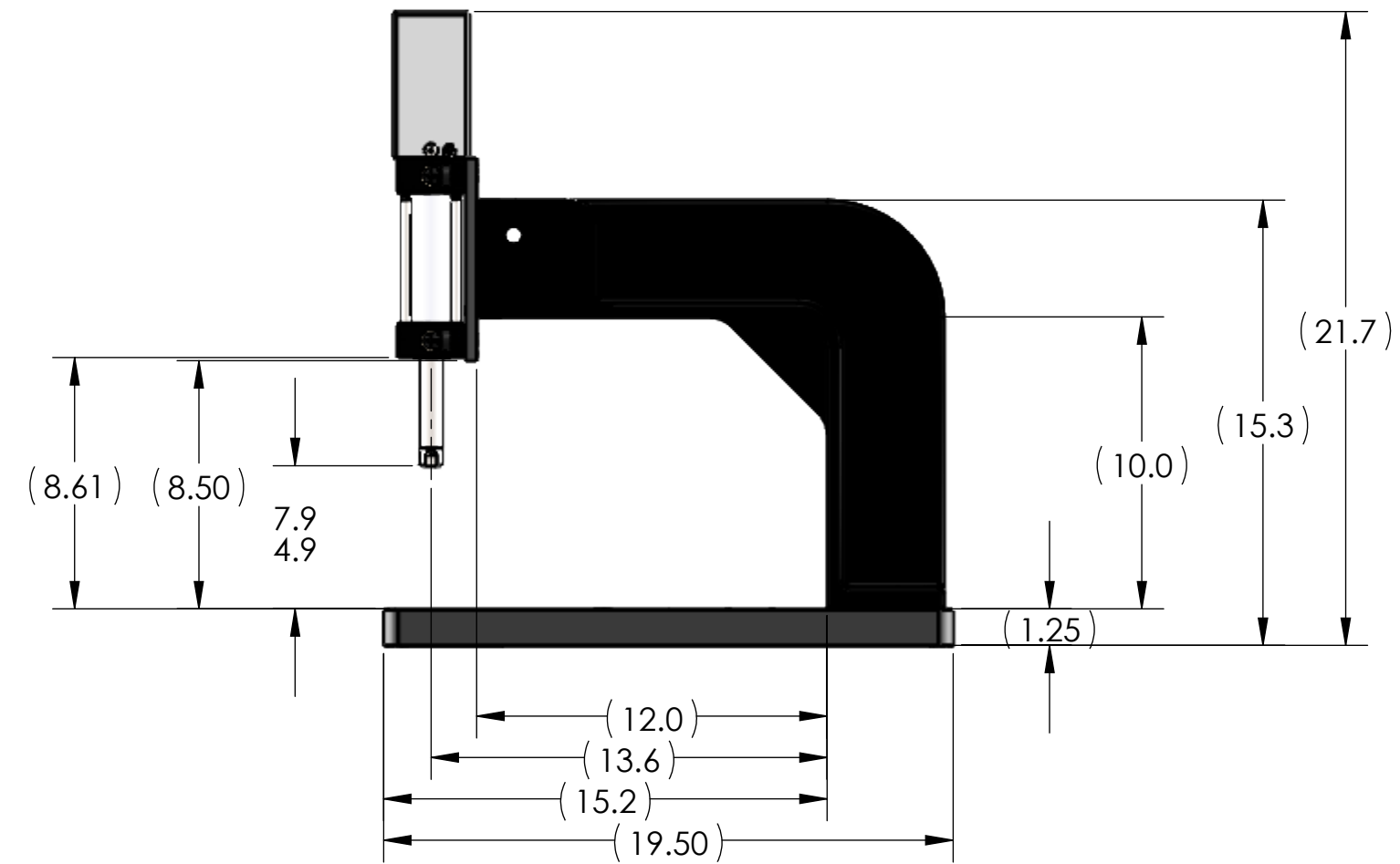
FRONT TUBES & WIRE MESH ARE REMOVABLE

FULLY ADJUSTABLE OPTO TOUCH BUTTONS



LOCK OUT/TAG OUT
ON REGULATOR

AP-6019 PNEUMATIC PRESS
SHOWN IN ALL VIEWS



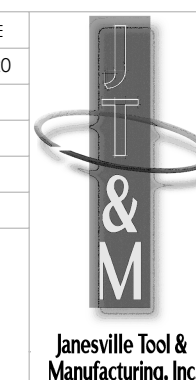
NOTES:

- PRESS OPERATES ON LOW VOLTAGE (24V DC).
- LED LIGHT COMES STANDARD.
- OPTIONAL FORCE MONITORING SYSTEM AVAILABLE UPON REQUEST (NOT SHOWN).
- OPTIONAL 500-15 ASSEMBLY BUSHING AVAILABLE UPON REQUEST (NOT SHOWN).
- OPTIONAL RISER BLOCKS AVAILABLE UPON REQUEST (NOT SHOWN).
- CYLINDER ROD SHOWN IN EXTENDED POSITION.
- ALL CYLINDERS COME STANDARD WITH 3" OF STROKE.
LONGER CYLINDER STROKE LENGTHS AVAILABLE UPON REQUEST.
- TOOL ADAPTER SHOWN DO NOT COME STANDARD.
- REMOVED GUARD IN RIGHT VIEW FOR CLARITY.

THIS DRAWING WAS PRINTED ON 1/6/2021

UNLESS OTHERWISE SPECIFIED:	
DIMENSIONS ARE IN INCHES	
TOLERANCES:	
FRACTIONAL \pm 0.15	
ANGULAR: MACH \pm 0.5 BEND \pm 0.5	
TWO PLACE DECIMAL \pm 0.01	
THREE PLACE DECIMAL \pm 0.005	
FOUR PLACE DECIMAL \pm 0.0005	
INTERPRET GEOMETRIC TOLERANCING PER: ASME Y14.5-1994	
MATERIAL	SEE DETAILS
FINISH	SEE DETAILS
	DO NOT SCALE DRAWING

NAME	DATE
DRAWN RKM	1/6/20
CHECKED	
ENG APPR.	
MFG APPR.	
Q.A.	
COMMENTS:	



Janesville Tool & Manufacturing Inc.		
3930 Enterprise Drive Janesville, WI 53546 Phone: 608-314-1620, Fax 608-314-1625		
TITLE: AP-6019 SINGLE STAGE		
SIZE	DWG. NO.	REV
C	AP-6019-000-00	-
SCALE: 1:6 WEIGHT: 192.62 SHEET 1 OF 1		

PROPRIETARY AND CONFIDENTIAL
THE INFORMATION CONTAINED IN THIS DRAWING IS THE SOLE PROPERTY OF JANESVILLE TOOL & MANUFACTURING INC. ANY REPRODUCTION IN PART OR AS A WHOLE WITHOUT THE WRITTEN PERMISSION OF JANESVILLE TOOL & MANUFACTURING INC. IS PROHIBITED.