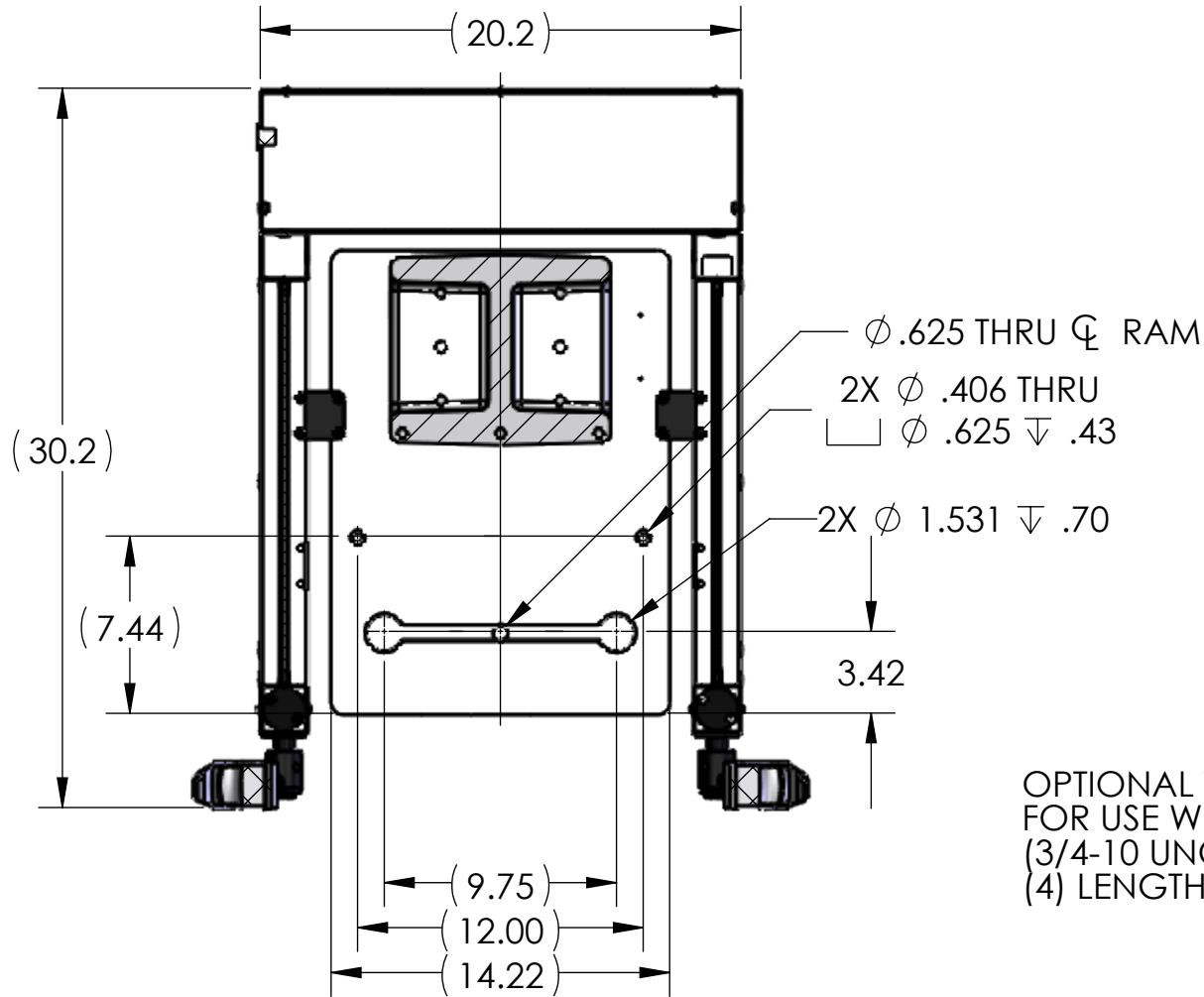


| REGULATED | FORCE |
|-----------|-------|
| 60 PSI | 2721 |
| 80 PSI | 3629 |
| 100 PSI | 4356 |



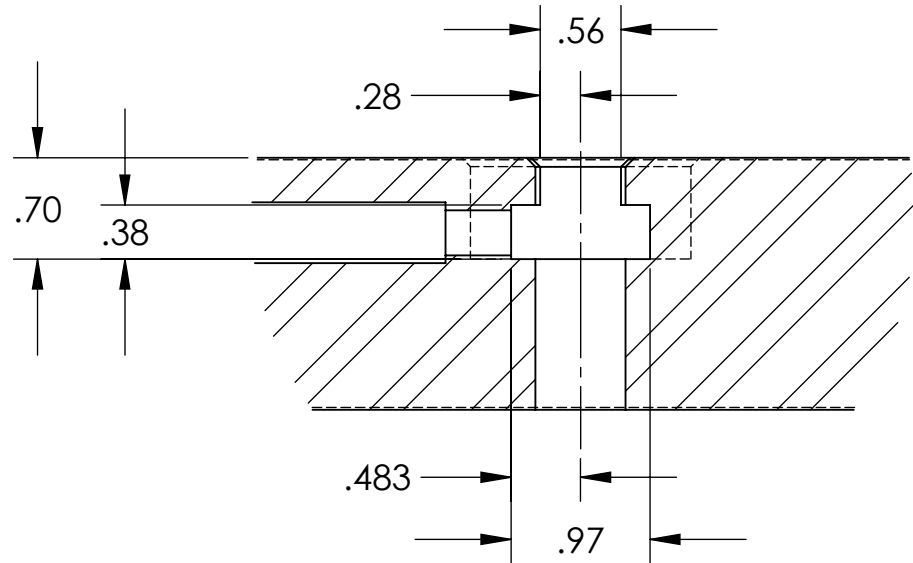
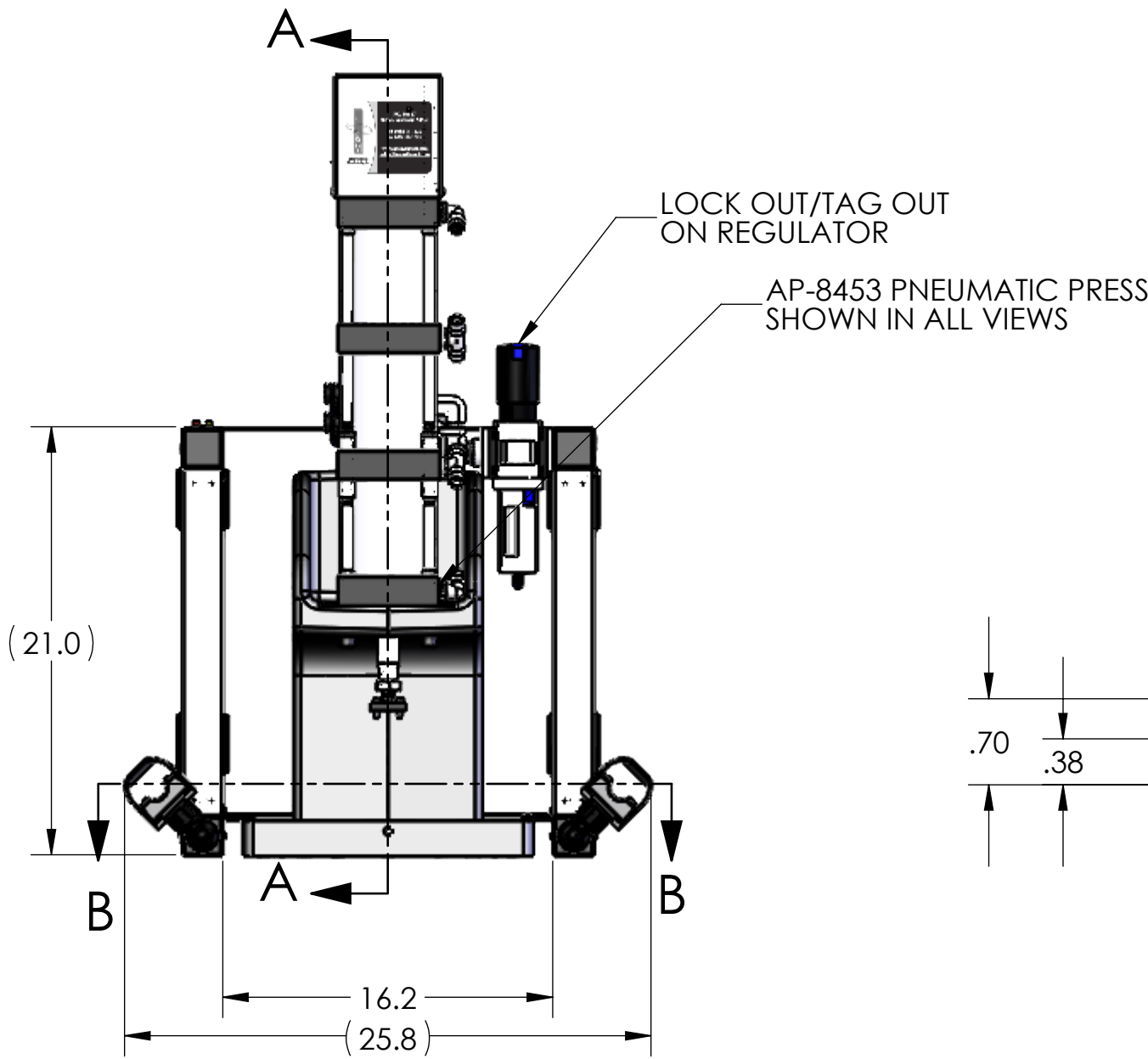
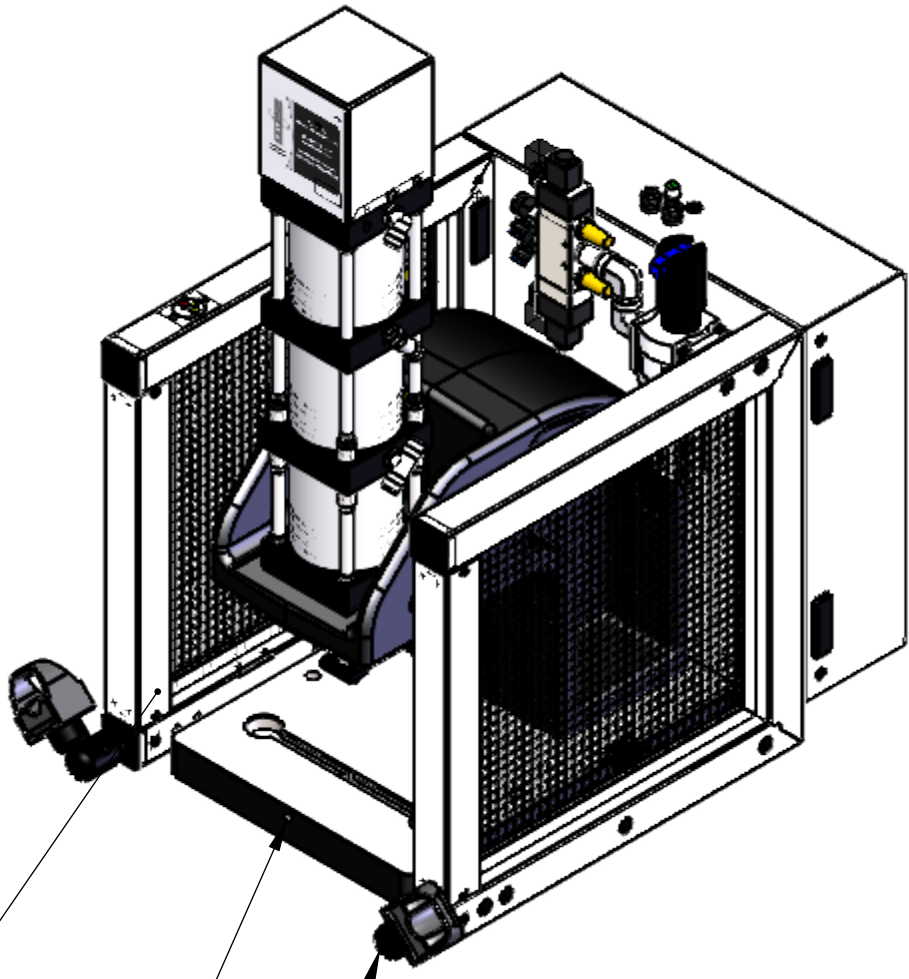
OPTIONAL TOOL ADAPTER:
FOR USE WITH DIE SETS
(3/4-10 UNC ∇ 1.50)
(4) LENGTHS AVAILABLE

DETAIL C
SCALE 1 : 3

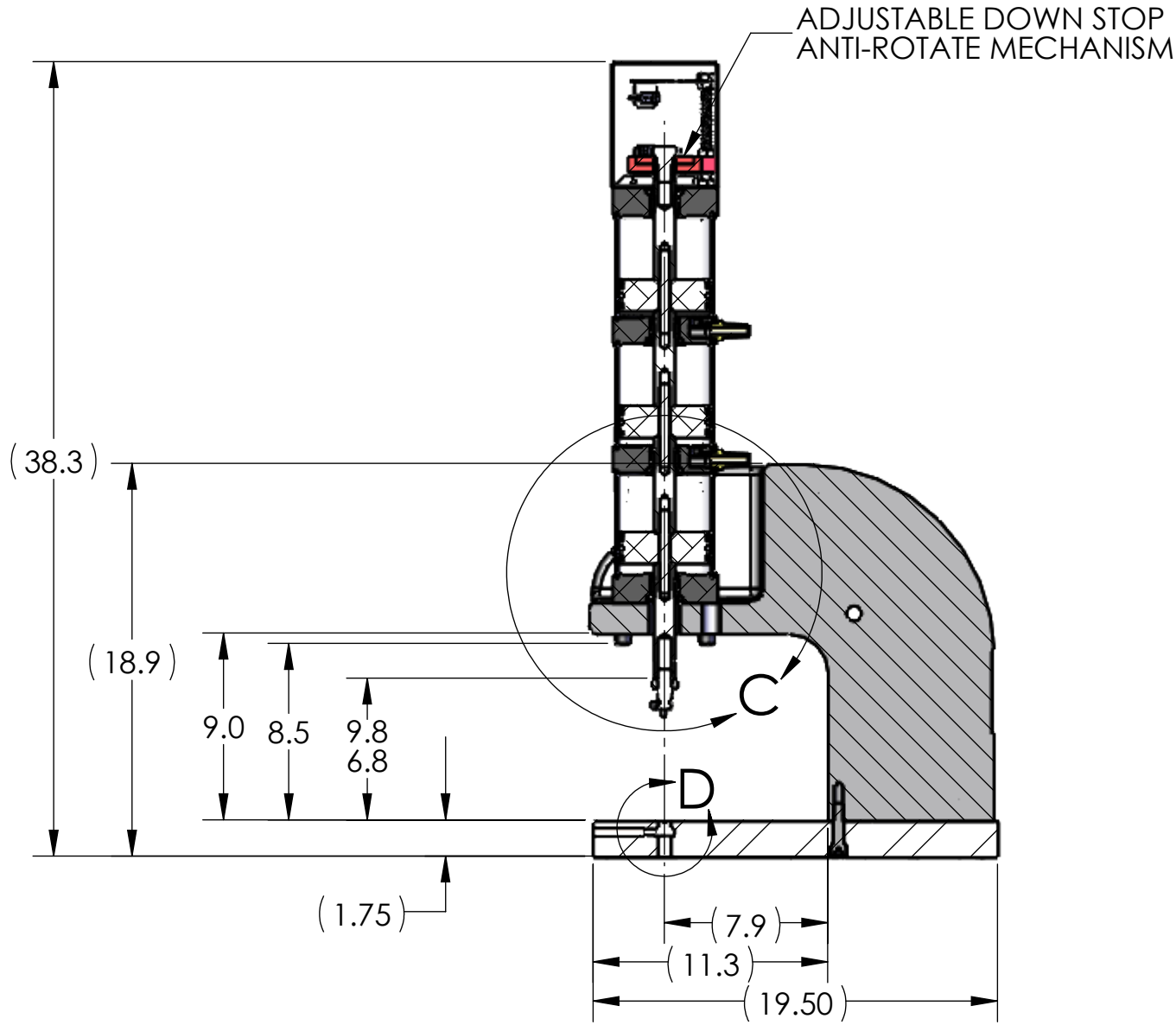
FRONT TUBES & WIRE MESH ARE REMOVABLE

STANDARD T-SLOT BASE
INCLUDED WITH ALL
8000 SERIES PRESSES

FULLY ADJUSTABLE OPTO TOUCH BUTTONS



DETAIL D
SCALE 3 : 4



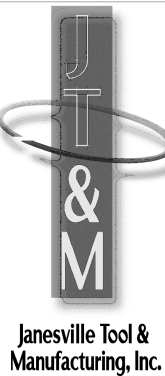
NOTES:

- PRESS OPERATES ON LOW VOLTAGE (24V DC).
- LED LIGHT COMES STANDARD.
- OPTIONAL FORCE MONITORING SYSTEM AVAILABLE UPON REQUEST (NOT SHOWN).
- OPTIONAL 500-15 ASSEMBLY BUSHING AVAILABLE UPON REQUEST (NOT SHOWN).
- CYLINDER ROD SHOWN IN EXTENDED POSITION.
- ALL CYLINDERS COME STANDARD WITH 3" OF STROKE.
LONGER CYLINDER STROKE LENGTHS AVAILABLE UPON REQUEST (UP TO 12").
- TOOL ADAPTER SHOWN DOES NOT COME STANDARD.
- REMOVED GUARD IN RIGHT VIEW FOR CLARITY.

THIS DRAWING WAS PRINTED ON 1/6/2021

| | |
|--|-------------|
| UNLESS OTHERWISE SPECIFIED: | |
| DIMENSIONS ARE IN INCHES | |
| TOLERANCES: | |
| FRACTIONAL ± 0.15 | |
| ANGULAR: MACH ± 0.5 BEND ± 0.5 | |
| TWO PLACE DECIMAL ± 0.01 | |
| THREE PLACE DECIMAL ± 0.005 | |
| FOUR PLACE DECIMAL ± 0.0005 | |
| INTERPRET GEOMETRIC TOLERANCING PER: ASME Y14.5-1994 | |
| MATERIAL | SEE DETAILS |
| FINISH | SEE DETAILS |
| DO NOT SCALE DRAWING | |

| NAME | DATE |
|-----------------------|--------|
| DRAWN RKM | 1/6/21 |
| CHECKED | |
| ENG APPR. | |
| MFG APPR. | |
| Q.A. | |
| COMMENTS: | |
| BREAK ALL SHARP EDGES | |



| | | |
|---|----------------------------|--------------|
| Janesville Tool & Manufacturing Inc. | | |
| 3930 Enterprise Drive | | |
| Janesville, WI 53546 | | |
| Phone: 608-314-1620, Fax 608-314-1625 | | |
| TITLE: AP-8453 THREE STAGE | | |
| SIZE C | DWG. NO. AP-8453-000-00 | REV - |
| SCALE: 1:8 | WEIGHT: 431.12 | SHEET 3 OF 4 |