

# SERVICE MANUAL

## Cylinder Information

SERIAL# \_\_\_\_\_

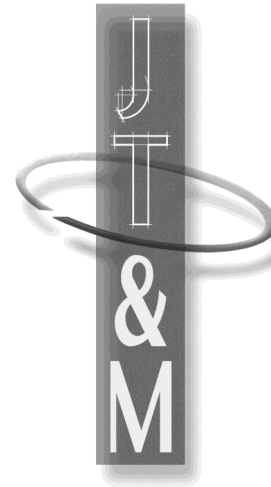
Model E-151	4-1/2" Bore x 3" Stroke—Double End (Repair Kit 4-1/2" Bore—Double End)	601 20352
Model EC-151	4-1/2" Bore x 3" Stroke—Double End (Repair Kit 4-1/2" Bore—Double End)	601 20352
Model E-235	4-1/2" Bore x 3" Stroke—Double End—2 Stage (Repair Kit 4-1/2" Bore—Double End—2 Stage)	607 607-RK
Model EC-235	4-1/2" Bore x 3" Stroke—Double End—2 Stage (Repair Kit 4-1/2" Bore—Double End—2 Stage)	607 607-RK



3930 Enterprise Drive  
Janesville, WI 53546

Phone 608/314-1620  
Fax 608/314-1625

[www.janesvilletool.com](http://www.janesvilletool.com)  
[sales@janesvilletool.com](mailto:sales@janesvilletool.com)



Janesville Tool &  
Manufacturing, Inc.

## E- SERIES

E-151  
EC-151  
E-235  
EC-235

3930 Enterprise Drive  
Janesville, WI 53546

Phone 608/314-1620  
Fax 608/314-1625

[www.janesvilletool.com](http://www.janesvilletool.com)  
[sales@janesvilletool.com](mailto:sales@janesvilletool.com)



Model EC-235 Shown

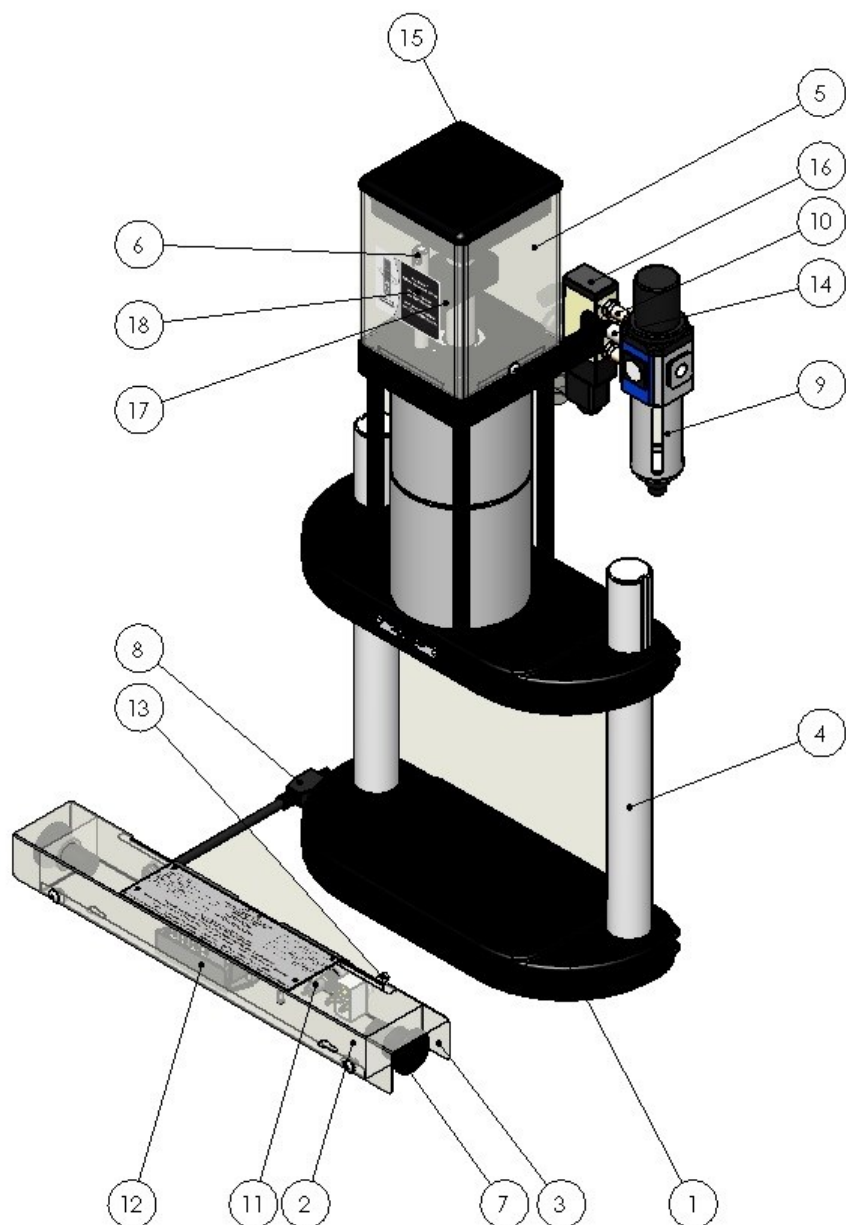
**Safety Instructions**  
**Read All Instructions Carefully**

1. **DO NOT OPERATE PRESS WITH GUARDS REMOVED.**  
**ALL SAFETY DEVICES MUST BE INSTALLED AND OPERABLE.**
2. **ADDITIONAL GUARDING IS REQUIRED FOR SPECIAL TOOLING.**
3. **DISCONNECT PRESS** when not in use, before servicing,  
when changing accessories, such as down stops and tooling.
4. **WEAR SAFETY GLASSES WHILE OPERATING PRESS.**
5. **GUARD AGAINST ELECTRIC SHOCK.** Do not use in damp locations.
6. **DRESS PROPERLY.** Do not wear loose fitting clothing or  
jewelry that could get caught in moving parts.
7. **KEEP HANDS AWAY.** Never reach near moving parts.
8. **DO NOT OPERATE PRESS OVER 80 PSI.** Excess pressure may  
cause damage or injury.
9. **DO NOT OPERATE PRESS OVER LABELED VOLTAGE.**
10. **WATCH FOR DAMAGED PARTS.** If press is damaged during  
operation, examine the damaged part carefully to insure that it  
will operate properly. If in doubt, replace the damaged part.  
Check for alignment of moving parts, binding of moving parts,  
mounting and any other conditions that may affect its operation.

**E-Series Parts List**  
**Models E-151/EC151 & E-235 EC-235**

ITEM	REQ'D	NAME	PART NO.
1	1	Press Base	3000-74
2	1	Control Box Cover	2000-33
3	1	Control Box Base	2000-34
4	2	Column	2000-37
5	1	Top Guard	2000-38
6	1	Anti-Rotate Stud	3000-08
7	2	Push Button	503A
8	1	Power Cord	505
9	1	Air Filter/Regulator	512
10	2	1/4" NPT Muffler	513
11	1	Fuse	515/516
12	1	Control Module	540
13	1	Power Switch	560
14	1	2" Pipe Nipple	787
15	1	Top Guard Cap	785
16	1	Valve	786
17	1	Adjustable Down Stop	3000-70
18	1	Anti-Rotate Bushing	790

## E-Series Parts List



## Safety Instructions Continued...

**11. KEEP WORK AREA CLEAN.** Cluttered areas and benches invite inju-

**12. STAY ALERT.** Watch what you are doing. Use common sense.

### MAINTENANCE GUIDELINES

Thanks to its unique design, this press requires virtually no maintenance. Clean, dry air is required for operation. (Lubricated air may be used, but must be used for the life of the press.)

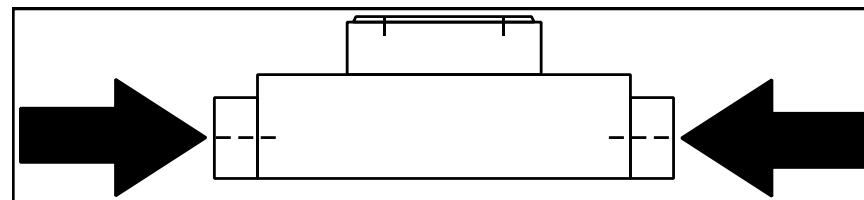
**CONTROL MODULE** – The life expectancy for the control module (#540) is ten million cycles. Replacing the module on a yearly basis will ensure production reliability and avoid costly downtime.

### FLOW CONTROLS

To alter the ram descent speed on your JT&M Press, adjust the screw marked B Located on the left hand side of the cylinder. To alter the ram ascent speed, adjust screw A. (The ram retraction speed has been preset by the factory.) Rotate the screws clockwise to decrease the speed of the ram.

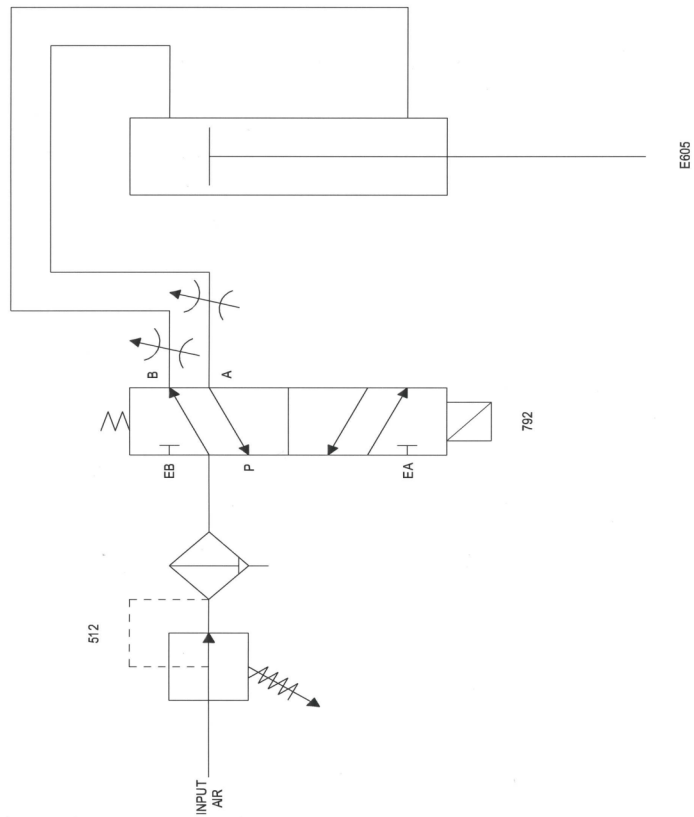
### PRESS OPERATION

To operate press, push palm buttons in at the same time. Hold the palm buttons in until the down stroke is completed.



**Please Write Serial No. On Front Cover.**

## Pneumatic Schematic



## Electrical Schematic

