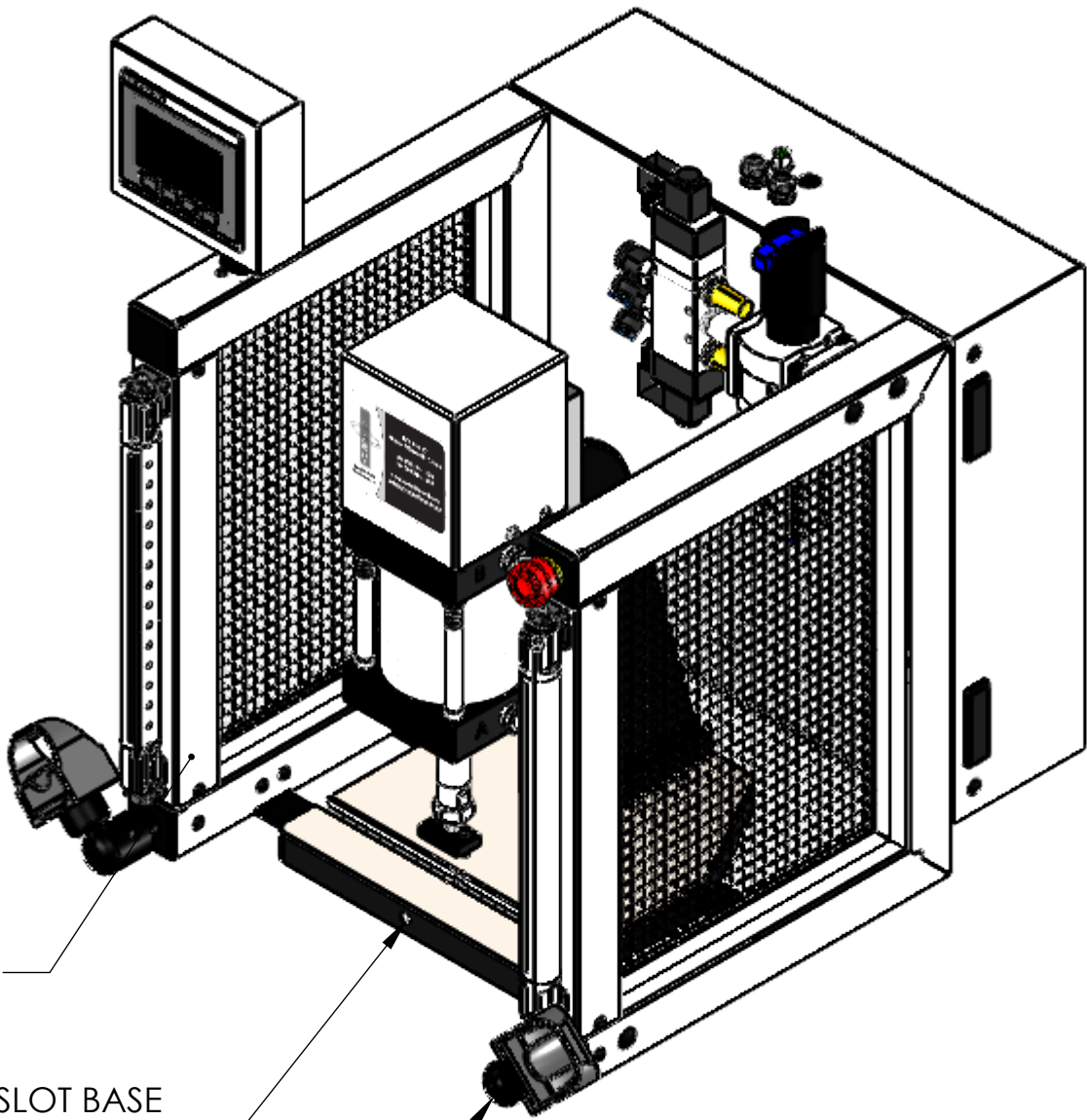
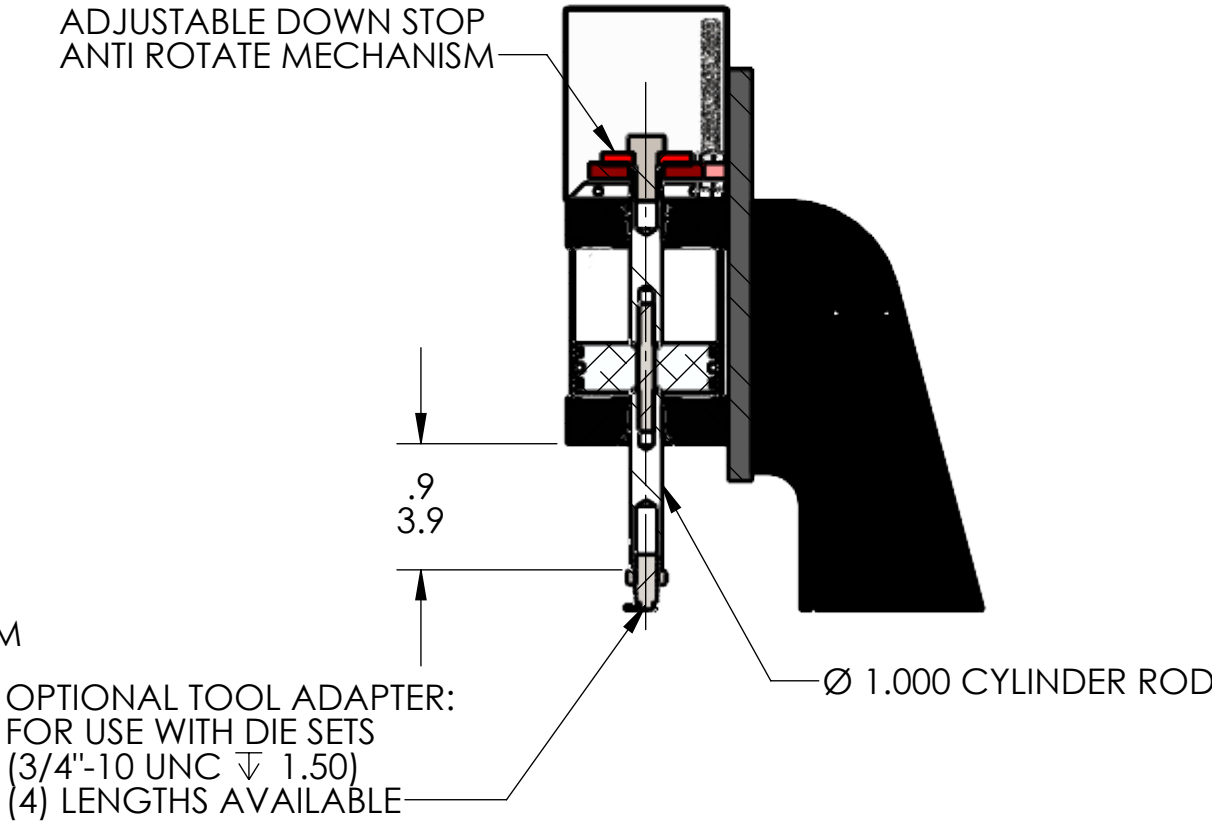
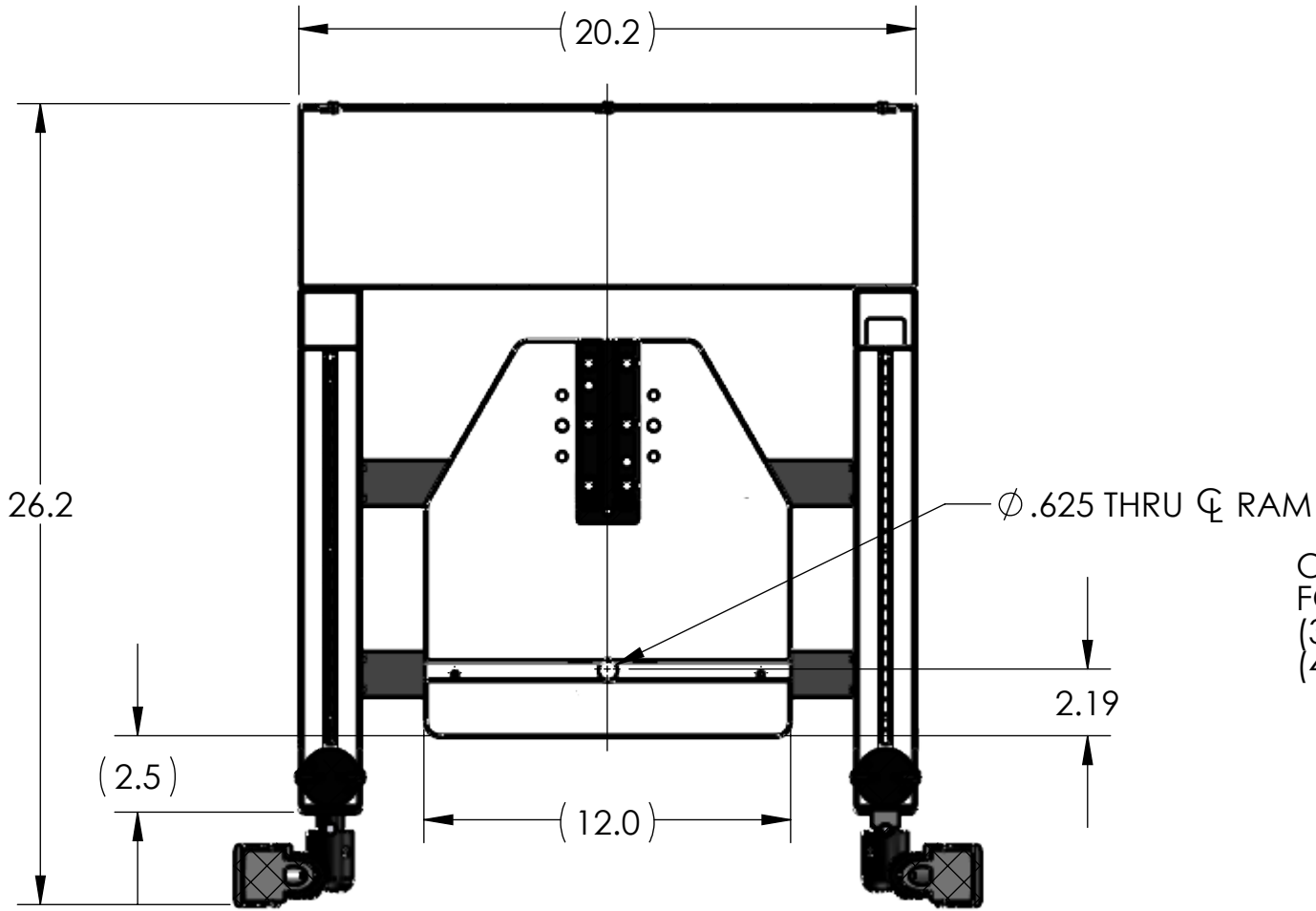
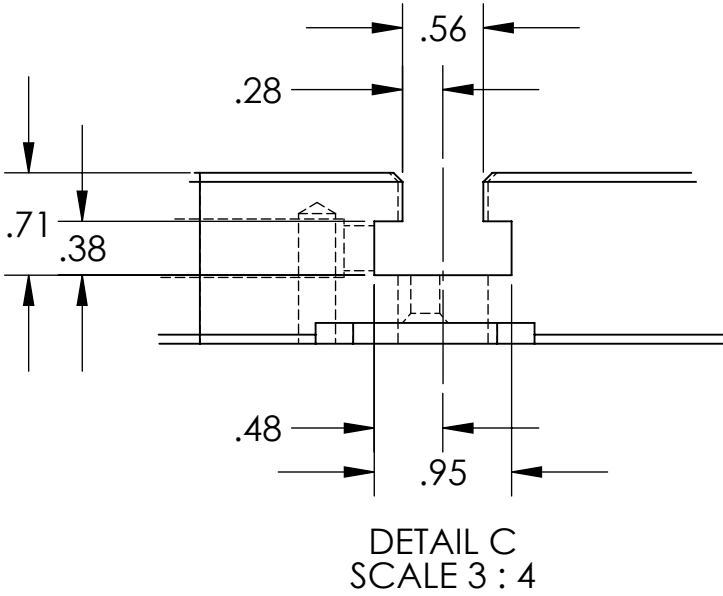
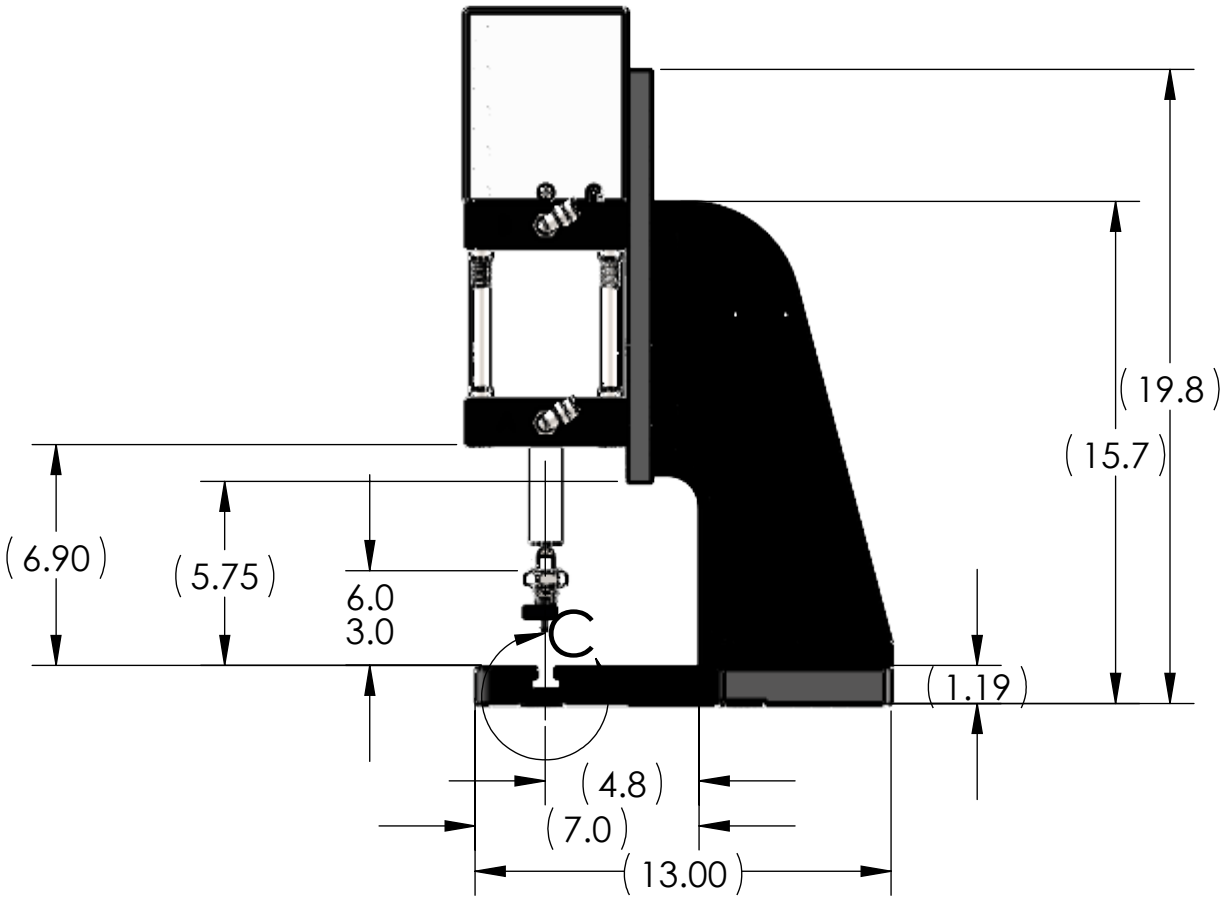
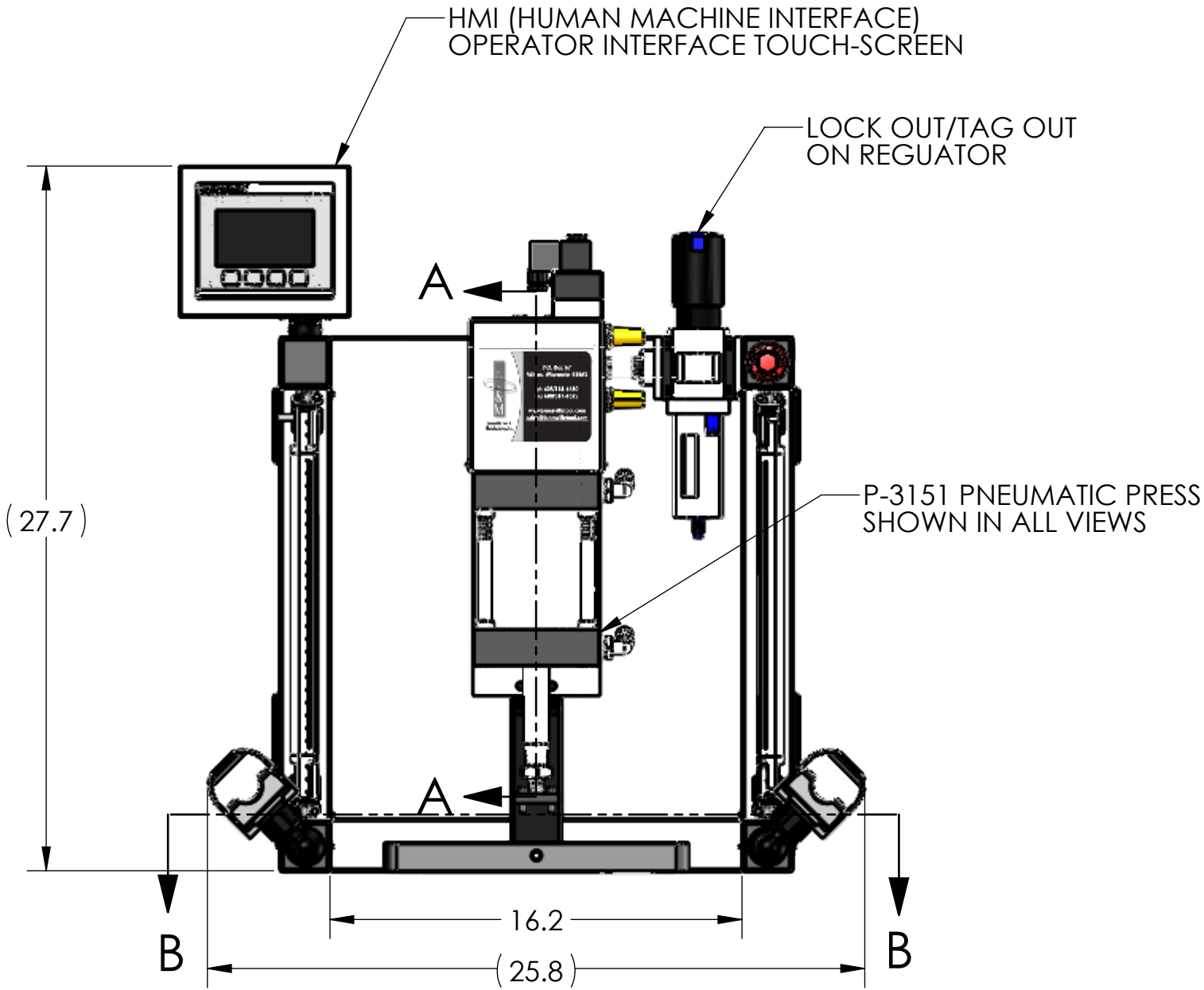


REGULATED PRESSURE	FORCE
60 PSI	906
80 PSI	1208
100 PSI	1510



FULLY ADJUSTABLE OPTO TOUCH BUTTONS



NOTES:

- PRESS OPERATES ON LOW VOLTAGE (24V DC).
- LED LIGHT COMES STANDARD.
- OPTIONAL FORCE MONITORING SYSTEM AVAILABLE UPON REQUEST (NOT SHOWN).
- OPTIONAL 500-15 ASSEMBLY BUSHING AVAILABLE UPON REQUEST (NOT SHOWN).
- CYLINDER ROD SHOWN IN EXTENDED POSITION.
- ALL CYLINDERS COME STANDARD WITH 3" OF STROKE.  
LONGER CYLINDER STROKE LENGTHS AVAILABLE UPON REQUEST (UP TO 12").
- OPTIONAL RISER BLOCKS UP TO 5" HEIGHT AVAILABLE UPON REQUEST (NOT SHOWN).  
RISER BLOCKS TALLER THAN 5" REQUIRE RELOCATION OF VALVE ASSEMBLY.
- LIGHT CURTAIN, E-STOP AND TOOL ADAPTER SHOWN DO NOT COME STANDARD.
- REMOVED GUARD IN RIGHT VIEW FOR CLARITY.

THIS DRAWING WAS PRINTED ON 3/3/2021

UNLESS OTHERWISE SPECIFIED:		NAME	DATE
DIMENSIONS ARE IN INCHES		DRAWN	RKM 3-3-21
TOLERANCES:		CHECKED	
FRACTIONAL: ± 0.15		ENG APPR.	
ANGULAR: MACH ± 0.5 BEND ± 0.5		MFG APPR.	
TWO PLACE DECIMAL ± 0.01		Q.A.	
THREE PLACE DECIMAL ± 0.005		COMMENTS:	
FOUR PLACE DECIMAL ± 0.0005			
INTERPRET GEOMETRIC TOLERANCING PER: ASME Y14.5-1994			
MATERIAL			
FINISH			
DO NOT SCALE DRAWING			

BREAK ALL SHARP EDGES	
-----------------------	--

Janesville Tool & Manufacturing, Inc.	
---------------------------------------	--

Janesville Tool & Manufacturing Inc. 3930 Enterprise Drive Janesville, WI 53546 Phone: 608-314-1620, Fax 608-314-1625	
--	--

TITLE: P-3151 SINGLE STAGE	
-------------------------------	--

SIZE	DWG. NO.	REV
C	P-3151-000-00	-

SCALE: 1:6	WEIGHT: 152.25	SHEET 2 OF 3
------------	----------------	--------------

PROPRIETARY AND CONFIDENTIAL  
THE INFORMATION CONTAINED IN THIS DRAWING IS THE SOLE PROPERTY OF JANSVILLE TOOL & MANUFACTURING INC. ANY REPRODUCTION IN PART OR AS A WHOLE WITHOUT THE WRITTEN PERMISSION OF JANSVILLE TOOL & MANUFACTURING INC. IS PROHIBITED.