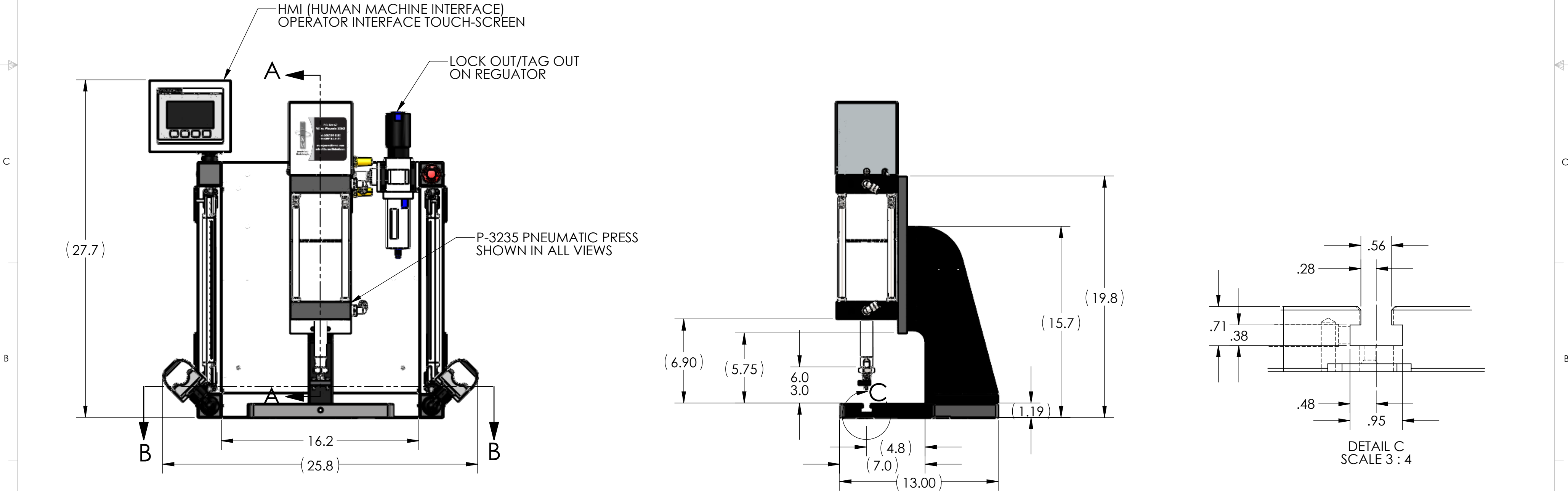
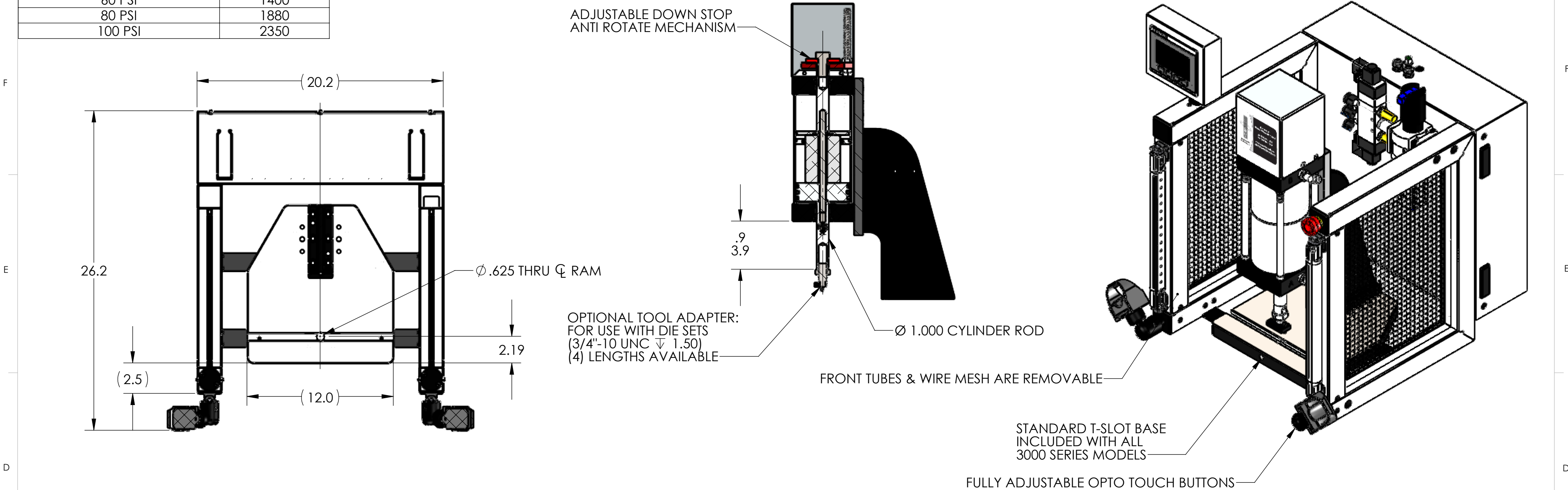


REGULATED PRESSURE	FORCE
60 PSI	1400
80 PSI	1880
100 PSI	2350



NOTES:

- PRESS OPERATES ON LOW VOLTAGE (24V DC).
- LED LIGHT COMES STANDARD.
- OPTIONAL 500-15 ASSEMBLY BUSHING AVAILABLE UPON REQUEST (NOT SHOWN).
- CYLINDER ROD SHOWN IN EXTENDED POSITION.
- ALL CYLINDERS COME STANDARD WITH 3" OF STROKE.  
LONGER CYLINDER STROKE LENGTHS AVAILABLE UPON REQUEST (UP TO 12").
- OPTIONAL RISER BLOCKS UP TO 5" HEIGHT AVAILABLE UPON REQUEST (NOT SHOWN).  
RISER BLOCKS TALLER THAN 5" REQUIRE RELOCATION OF VALVE ASSEMBLY.
- LIGHT CURTAIN, E-STOP AND TOOL ADAPTER SHOWN DO NOT COME STANDARD.
- REMOVED GUARD IN RIGHT VIEW FOR CLARITY.

THIS DRAWING WAS PRINTED ON 3/3/2021

UNLESS OTHERWISE SPECIFIED:	DRAWN	NAME	DATE
DIMENSIONS ARE IN INCHES	RKM		3-3-21
TOLERANCES:	CHECKED		
FRACTIONAL ± 0.15	ENG APPR.		
ANGULAR: MACH ± 0.5 BEND ± 0.5	MFG APPR.		
TWO PLACE DECIMAL ± 0.01			
THREE PLACE DECIMAL ± 0.005			
FOUR PLACE DECIMAL ± 0.0005			
INTERPRET GEOMETRIC TOLERANCING PER: ASME Y14.5-1994	Q.A.		
MATERIAL	COMMENTS:		
FINISH			
DO NOT SCALE DRAWING			

PROPRIETARY AND CONFIDENTIAL

THE INFORMATION CONTAINED IN THIS DRAWING IS THE SOLE PROPERTY OF JANSVILLE TOOL & MANUFACTURING INC. ANY REPRODUCTION IN PART OR AS A WHOLE WITHOUT THE WRITTEN PERMISSION OF JANSVILLE TOOL & MANUFACTURING INC. IS PROHIBITED.

J & M

Jansville Tool & Manufacturing, Inc.

3930 Enterprise Drive  
Jansville, WI 53546  
Phone: 608-314-1620, Fax 608-314-1625

TITLE: P-3235 TWO STAGE

SIZE DWG. NO. REV  
C P-3235-000-00 -

SCALE: 1:6 WEIGHT: 157.45 SHEET 3 OF 3