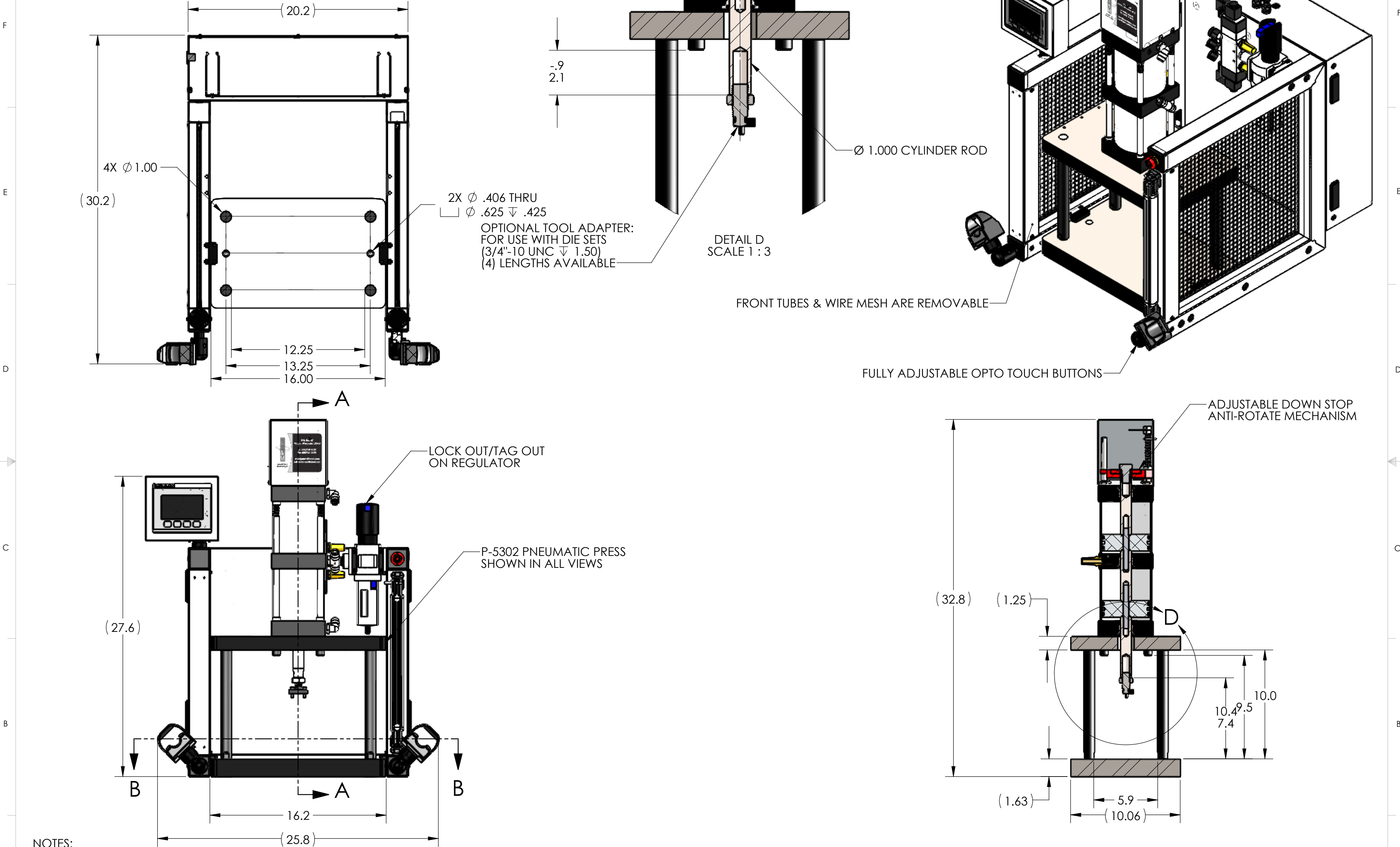


REGULATED PRESSURE	FORCE
60 PSI	1814
80 PSI	2419
100 PSI	3024



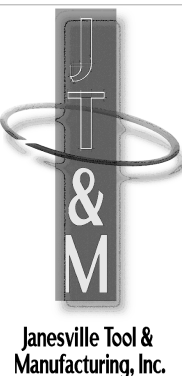
- NOTES:
- PRESS OPERATES ON LOW VOLTAGE (24V DC).
  - LED LIGHT COMES STANDARD.
  - OPTIONAL FORCE MONITORING SYSTEM AVAILABLE UPON REQUEST (NOT SHOWN).
  - CYLINDER ROD SHOWN IN EXTENDED POSITION.
  - ALL CYLINDERS COME STANDARD WITH 3" OF STROKE.  
LONGER CYLINDER STROKE LENGTHS AVAILABLE UPON REQUEST (UP TO 12").
  - PRESS COMES STANDARD WITH 10" LONG POSTS.  
ALTERNATE POST LENGTHS AVAILABLE UPON REQUEST (UP TO 18").
  - LIGHT CURTAIN, E-STOP AND TOOL ADAPTER SHOWN DOES NOT COME STANDARD.
  - REMOVED GUARD IN RIGHT VIEW FOR CLARITY.

PROPRIETARY AND CONFIDENTIAL  
THE INFORMATION CONTAINED IN THIS  
DRAWING IS THE SOLE PROPERTY OF  
JANESVILLE TOOL & MANUFACTURING INC.  
ANY REPRODUCTION IN PART OR AS A WHOLE  
WITHOUT THE WRITTEN PERMISSION OF  
JANESVILLE TOOL & MANUFACTURING INC. IS  
PROHIBITED.

UNLESS OTHERWISE SPECIFIED:	
DIMENSIONS ARE IN INCHES	
TOLERANCES:	
FRACTIONAL: $\pm 0.15$	
ANGULAR: MACH $\pm 0.5$ BEND $\pm 0.5$	
TWO PLACE DECIMAL $\pm 0.01$	
THREE PLACE DECIMAL $\pm 0.005$	
FOUR PLACE DECIMAL $\pm 0.0005$	
INTERPRET GEOMETRIC TOLERANCING PER: ASME Y14.5-1994	
MATERIAL	SEE DETAILS
FINISH	SEE DETAILS
	DO NOT SCALE DRAWING

THIS DRAWING WAS PRINTED ON 1/29/2021

NAME	DATE
DRAWN RKM	1/29/21
CHECKED	
ENG APPR.	
MFG APPR.	
Q.A.	
COMMENTS:	



<b>Janesville Tool &amp; Manufacturing Inc.</b> 3930 Enterprise Drive Janesville, WI 53546 Phone: 608-314-1620, Fax 608-314-1625		
TITLE: <b>P-5302 TWO STAGE</b>		
SIZE <b>C</b>	DWG. NO. <b>P-5302-000-00</b>	REV <b>-</b>
SCALE: 1:6 WEIGHT: 233.57 SHEET 1 OF 3		