

REGULATED PRESSURE	FORCE
60 PSI	118
80 PSI	157
100 PSI	196

F

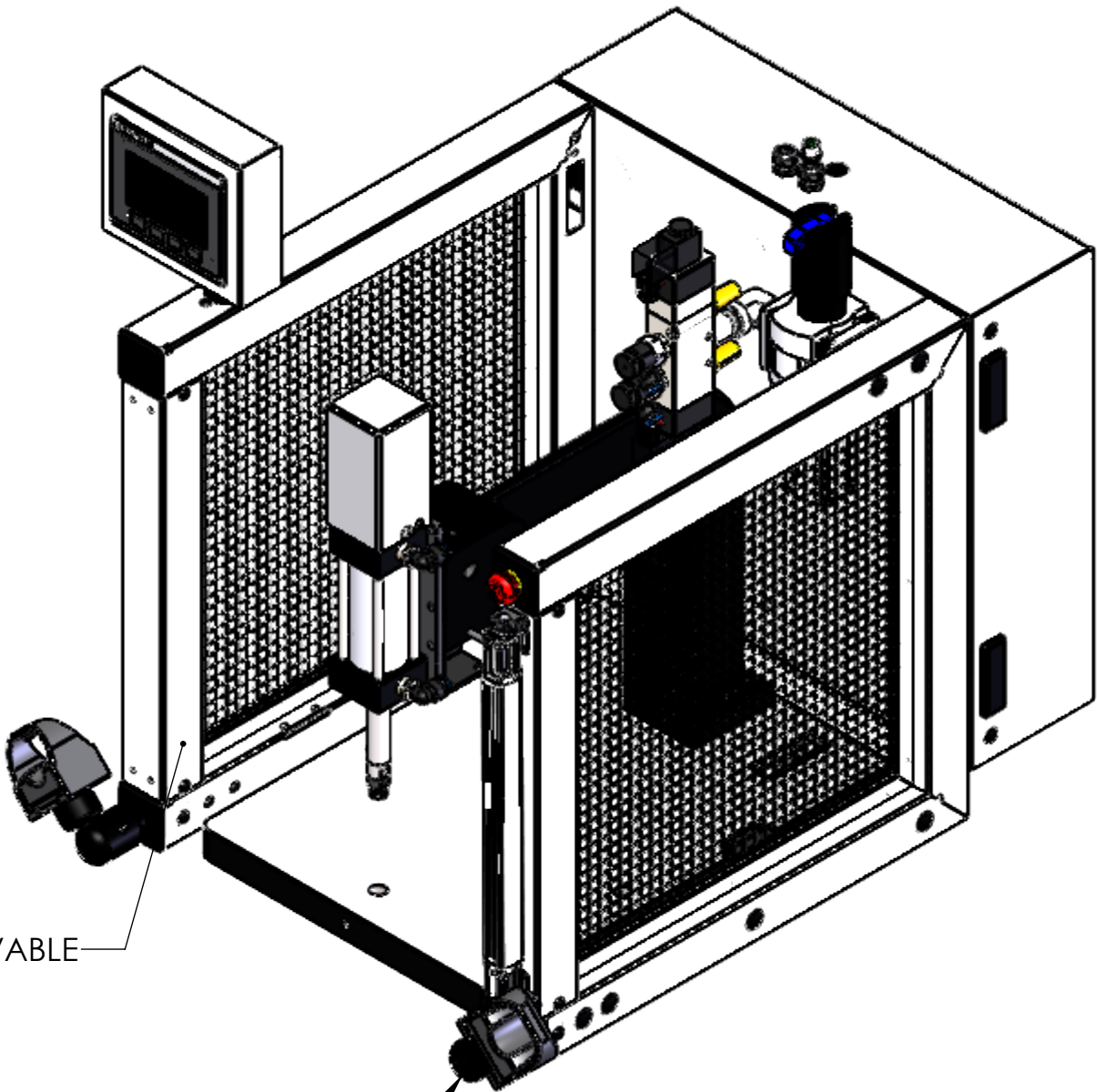
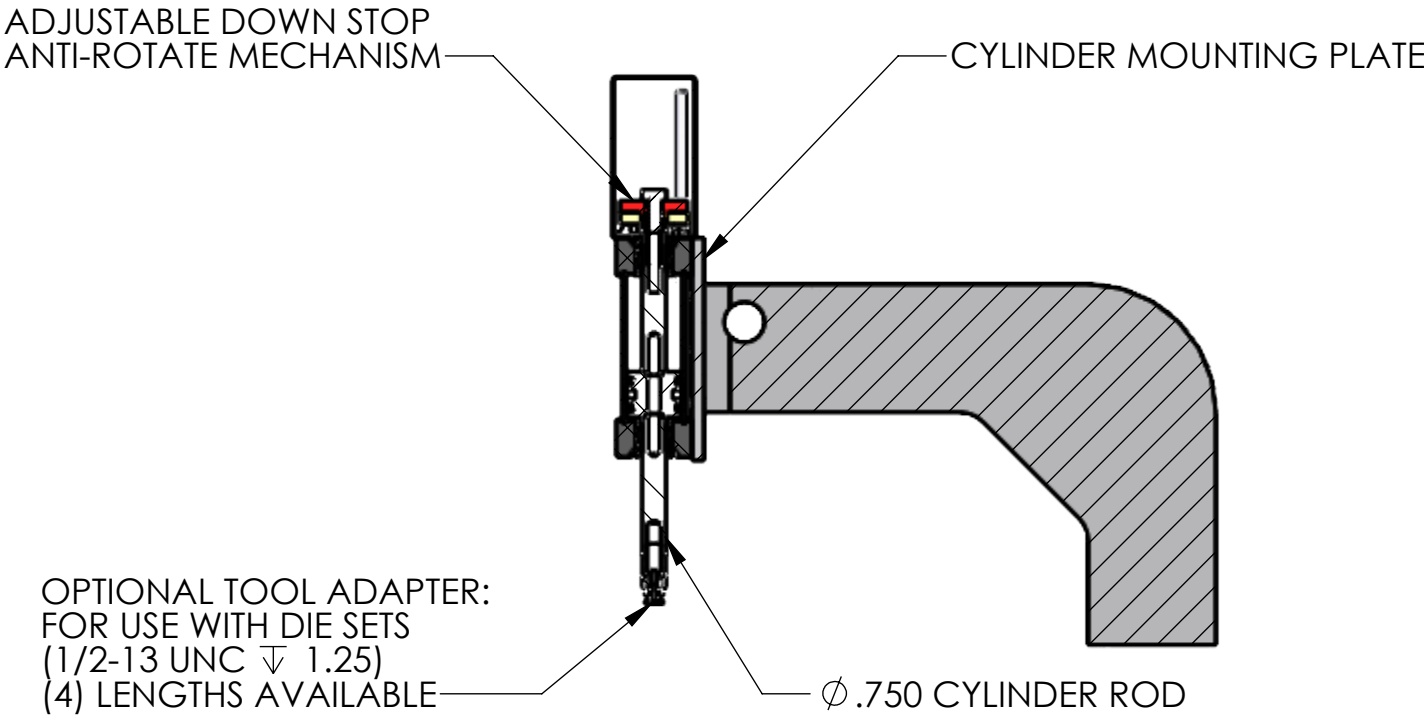
E

D

C

B

A



F

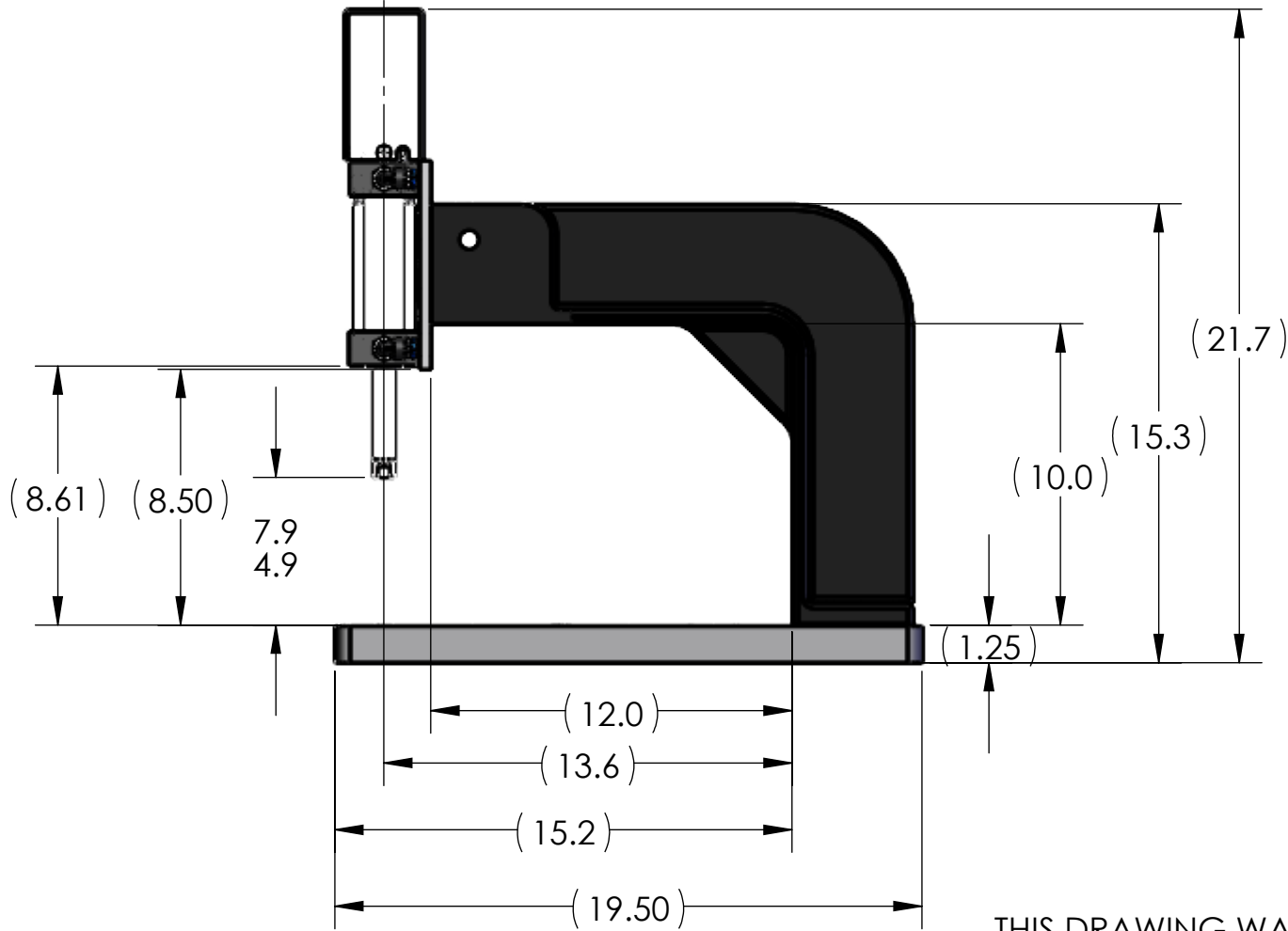
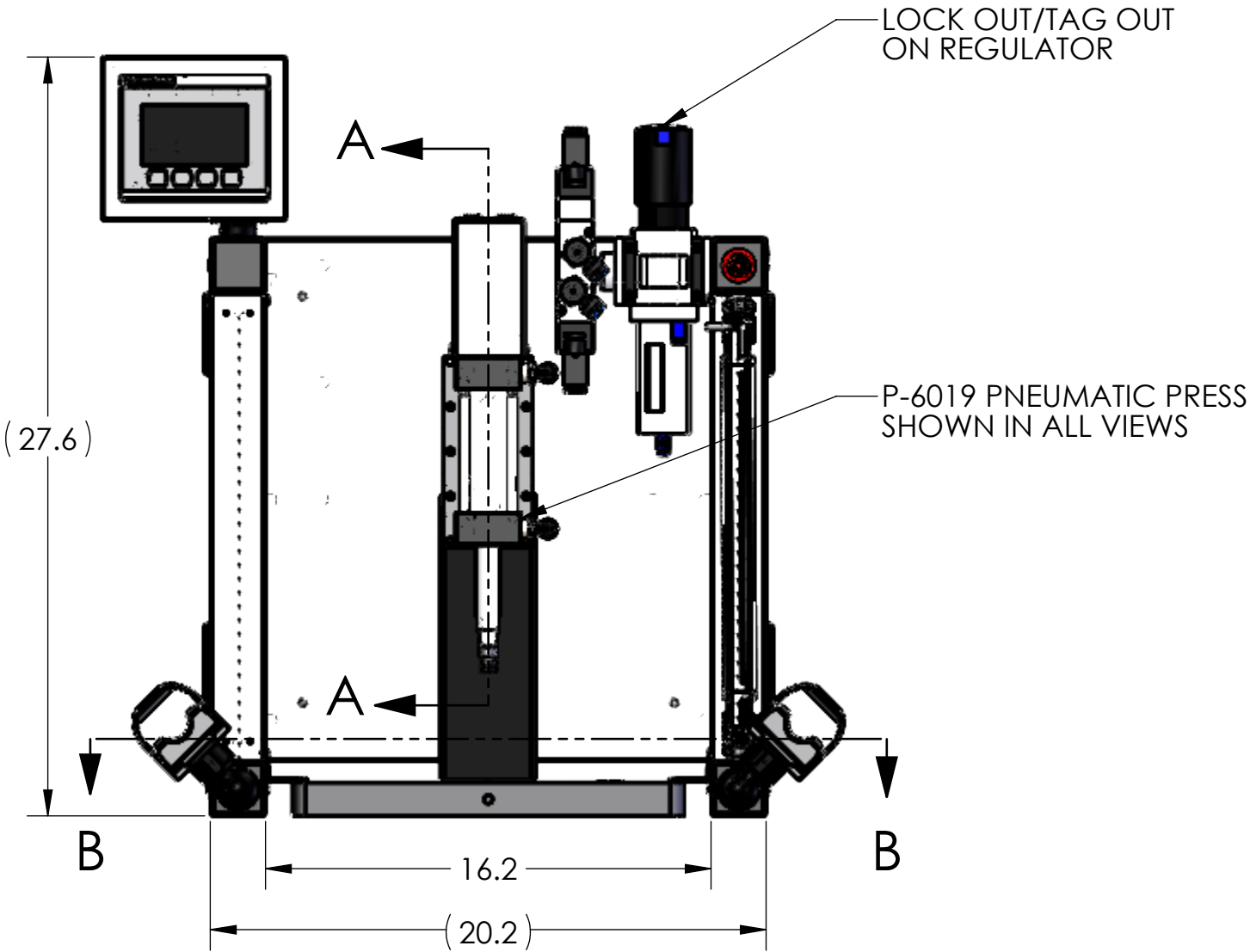
E

D

C

B

A



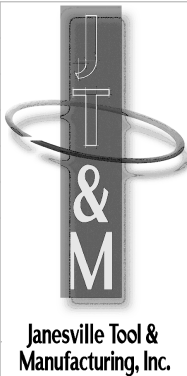
NOTES:

1. PRESS OPERATES ON LOW VOLTAGE (24V DC).
2. LED LIGHT COMES STANDARD.
3. OPTIONAL FORCE MONITORING SYSTEM AVAILABLE UPON REQUEST (NOT SHOWN).
4. OPTIONAL 500-15 ASSEMBLY BUSHING AVAILABLE UPON REQUEST (NOT SHOWN).
5. OPTIONAL RISER BLOCKS AVAILABLE UPON REQUEST (NOT SHOWN).
6. CYLINDER ROD SHOWN IN EXTENDED POSITION.
7. ALL CYLINDERS COME STANDARD WITH 3" OF STROKE.  
LONGER CYLINDER STROKE LENGTHS AVAILABLE UPON REQUEST.
8. LIGHT CURTAIN, E-STOP AND TOOL ADAPTER SHOWN DO NOT COME STANDARD.
9. REMOVED GUARD IN RIGHT VIEW FOR CLARITY.

THIS DRAWING WAS PRINTED ON 2/24/2021

UNLESS OTHERWISE SPECIFIED:		NAME	DATE
DIMENSIONS ARE IN INCHES TOLERANCES: FRACTIONAL ± 0.15 ANGULAR: MACH ± 0.5 BEND ± 0.5 TWO PLACE DECIMAL ± 0.01 THREE PLACE DECIMAL ± 0.005 FOUR PLACE DECIMAL ± 0.0005	DRAWN	RKM	1/8/21
	CHECKED		
	ENG APPR.		
	MFG APPR.		
INTERPRET GEOMETRIC TOLERANCING PER: ASME Y14.5-1994		Q.A.	
MATERIAL		COMMENTS:	
FINISH		BREAK ALL SHARP EDGES	
DO NOT SCALE DRAWING			

PROPRIETARY AND CONFIDENTIAL  
THE INFORMATION CONTAINED IN THIS  
DRAWING IS THE SOLE PROPERTY OF  
JANESVILLE TOOL & MANUFACTURING INC.  
ANY REPRODUCTION IN PART OR AS A WHOLE  
WITHOUT THE WRITTEN PERMISSION OF  
JANESVILLE TOOL & MANUFACTURING INC. IS  
PROHIBITED.



<b>Janesville Tool &amp; Manufacturing Inc.</b> 3930 Enterprise Drive Janesville, WI 53546 Phone: 608-314-1620, Fax 608-314-1625		
TITLE: <b>P-6019 SINGLE STAGE</b>		
SIZE <b>C</b>	DWG. NO. <b>P-6019-000-00</b>	REV <b>-</b>
SCALE: 1:6   WEIGHT: 203.25   SHEET 1 OF 1		