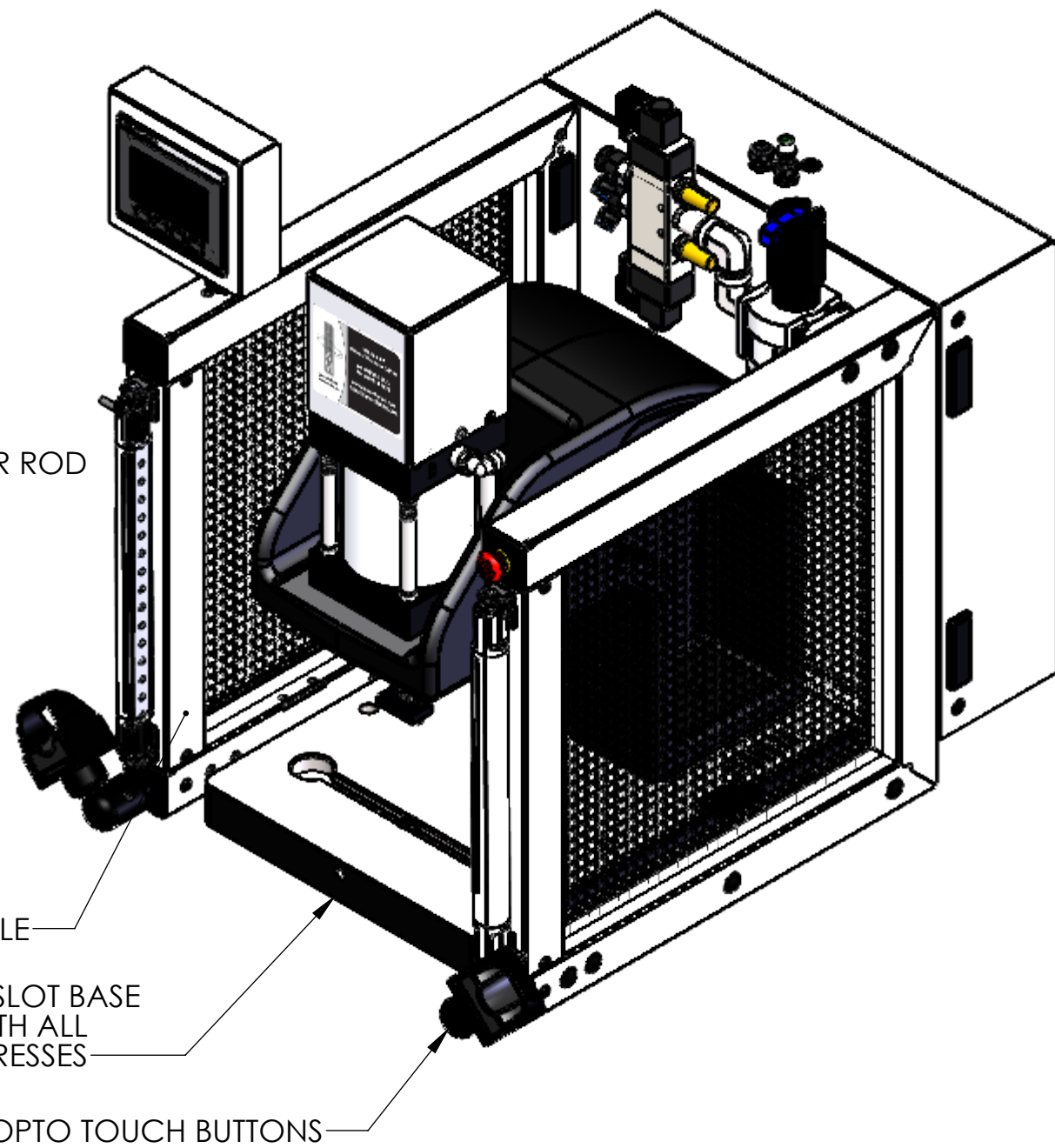
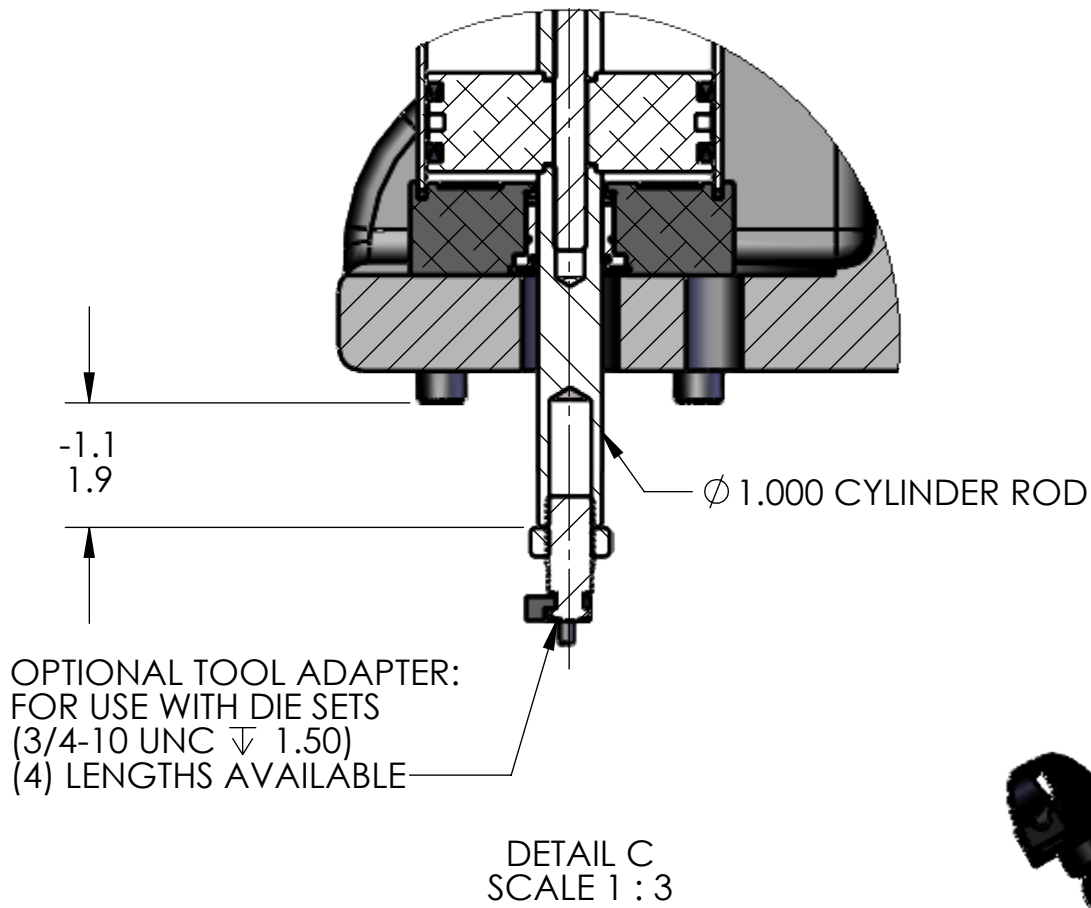
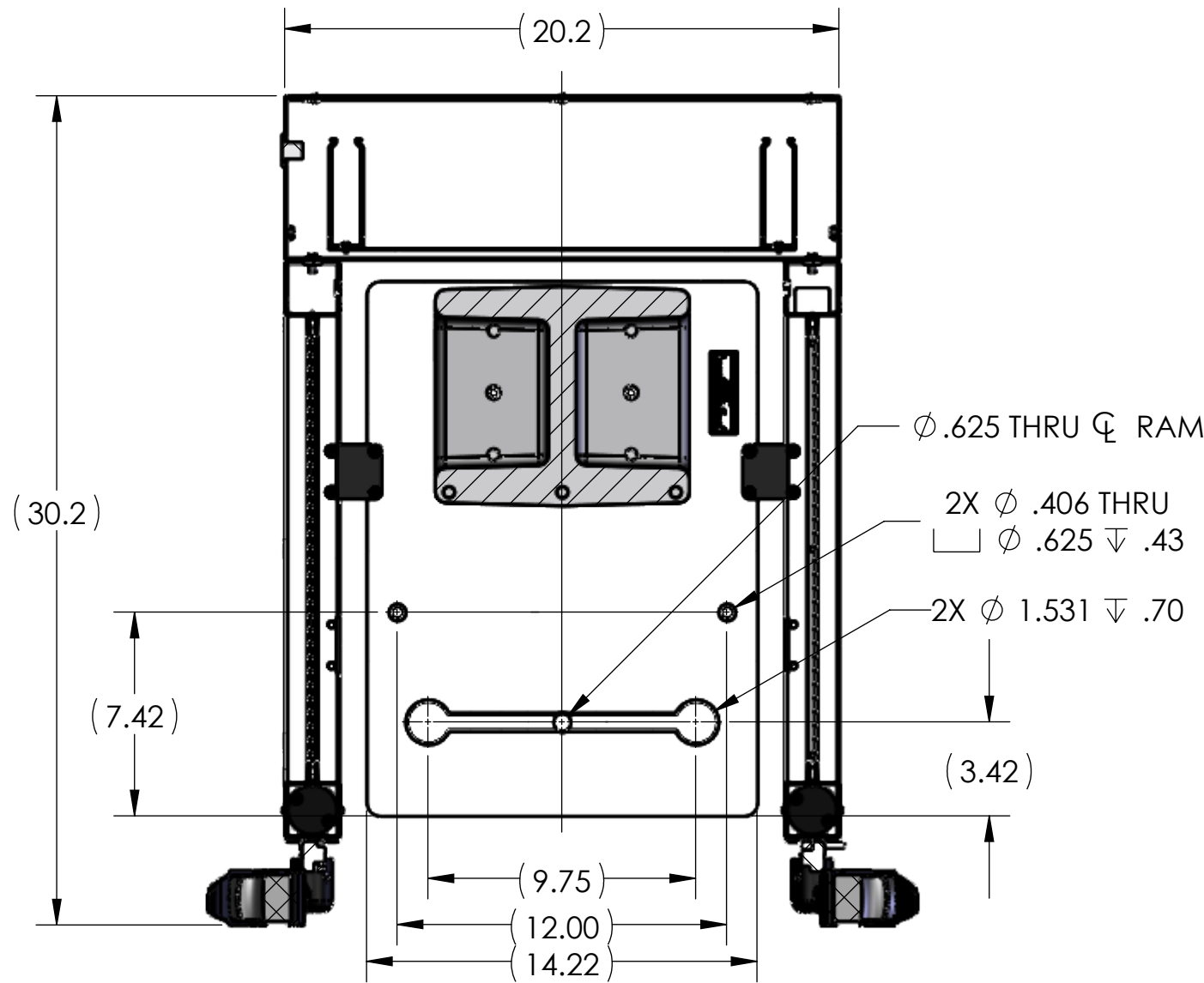
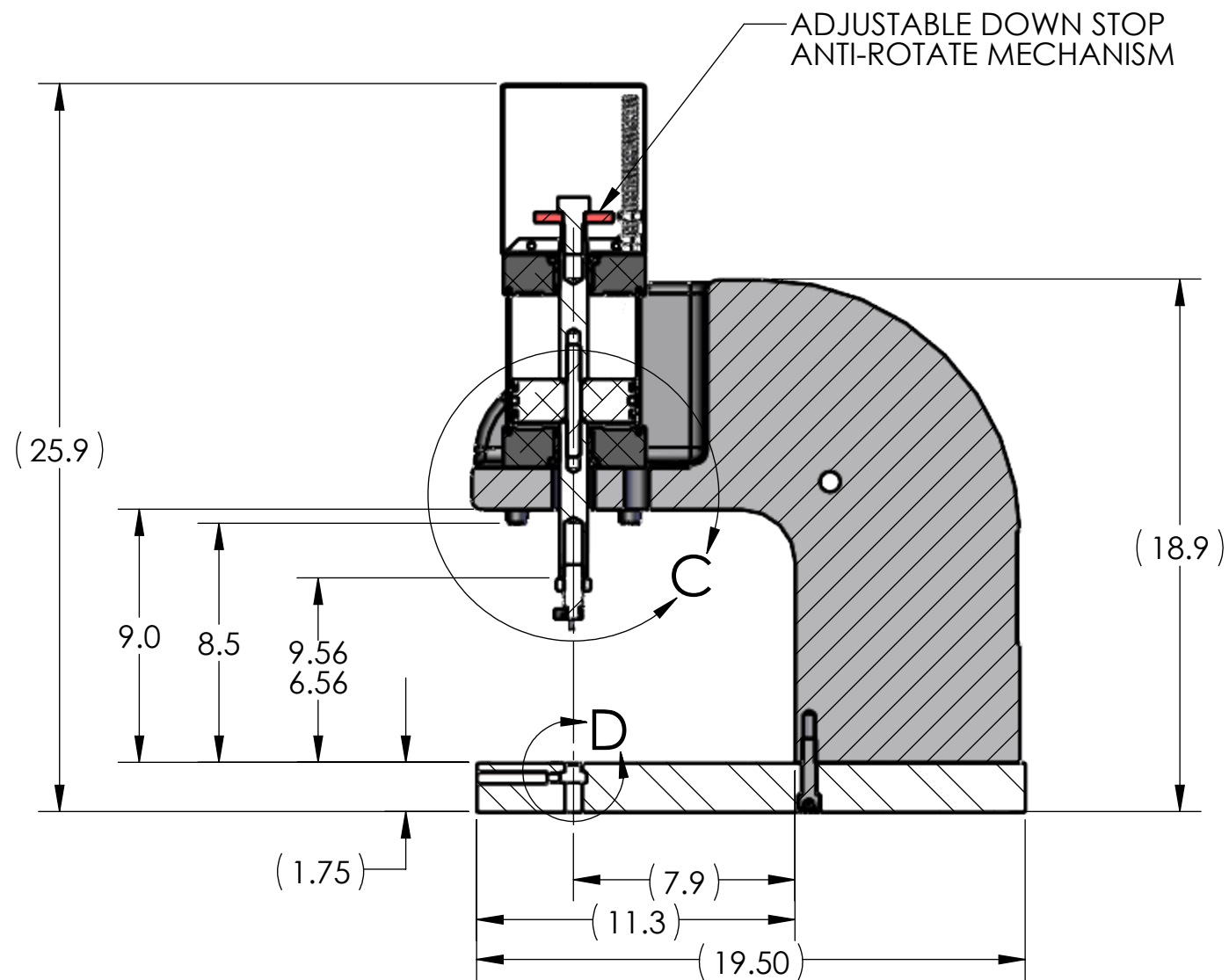
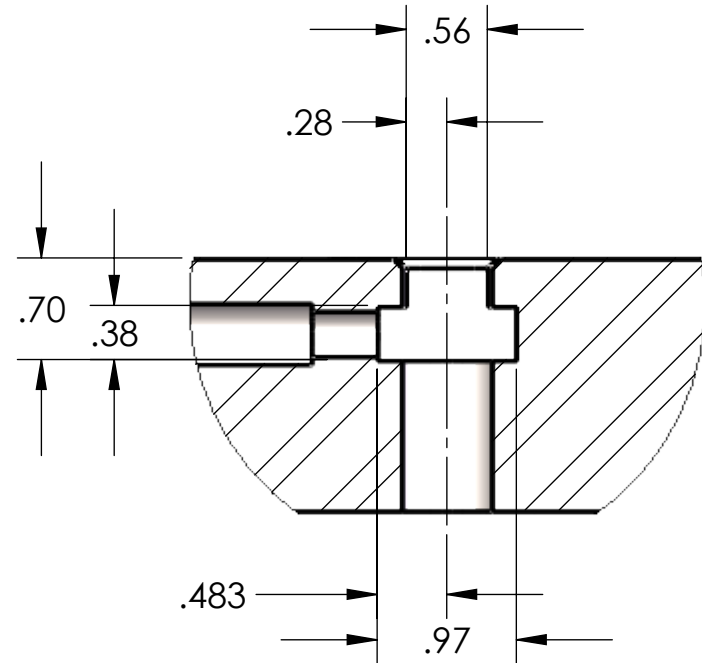
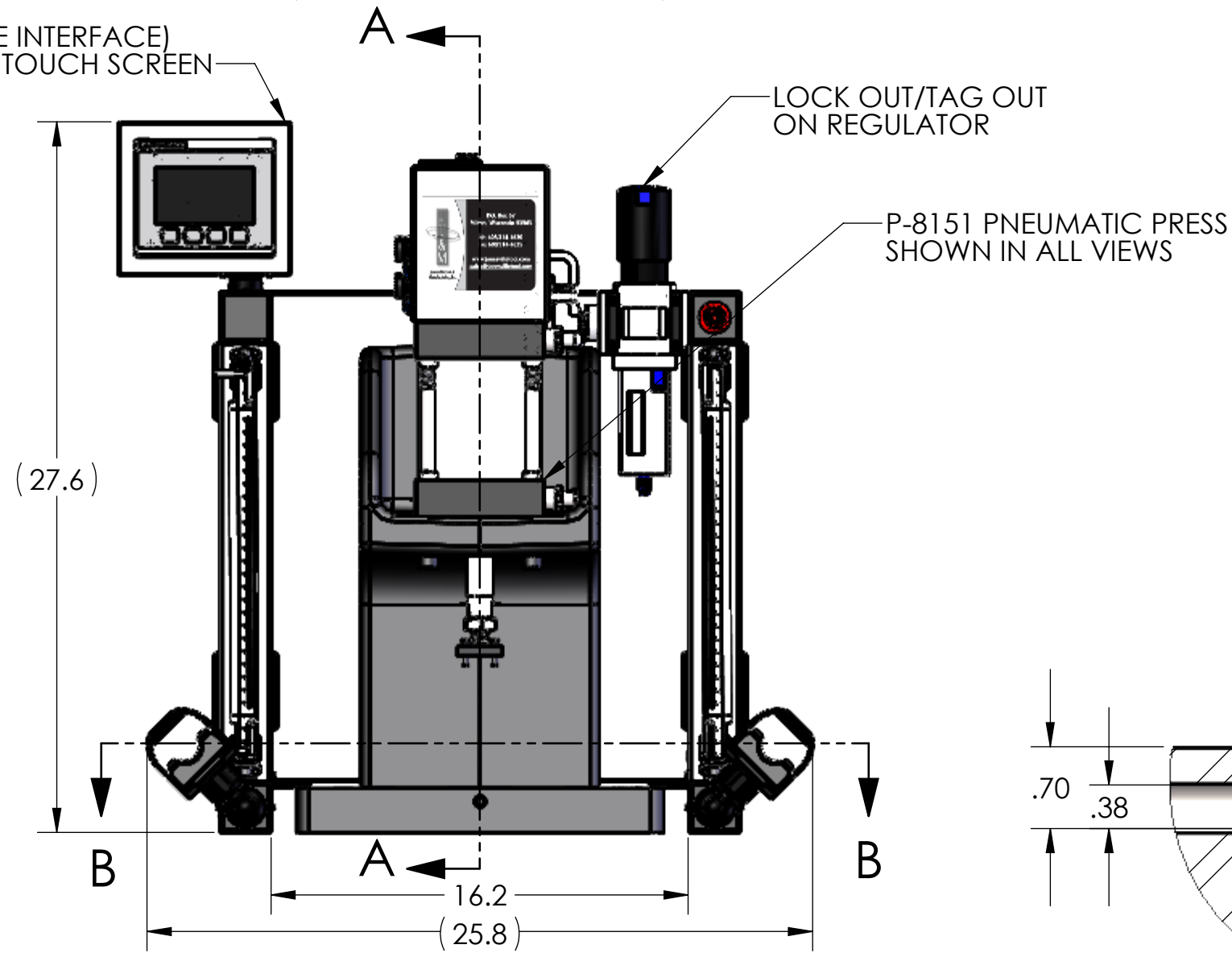


REGULATED PRESSURE	FORCE
60 PSI	906
80 PSI	1208
100 PSI	1510



HMI (HUMAN MACHINE INTERFACE)  
OPERATOR INTERFACE TOUCH SCREEN



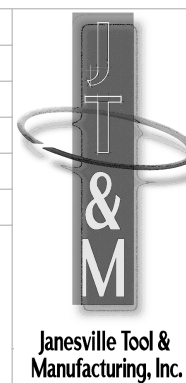
#### NOTES:

- PRESS OPERATES ON LOW VOLTAGE (24V DC).
- LED LIGHT COMES STANDARD.
- OPTIONAL FORCE MONITORING SYSTEM AVAILABLE UPON REQUEST (NOT SHOWN).
- CYLINDER ROD SHOWN IN EXTENDED POSITION.
- ALL CYLINDERS COME STANDARD WITH 3" OF STROKE.  
LONGER CYLINDER STROKE LENGTHS AVAILABLE UPON REQUEST (UP TO 12").
- PRESS COMES STANDARD WITH 10" LONG POSTS.  
ALTERNATE POST LENGTHS AVAILABLE UPON REQUEST (UP TO 18").
- LIGHT CURTAIN, E-STOP AND TOOL ADAPTER SHOWN DO NOT COME STANDARD.
- REMOVED GUARD IN RIGHT VIEW FOR CLARITY.

THIS DRAWING WAS PRINTED ON 2/24/2021

UNLESS OTHERWISE SPECIFIED:	DRAWN	NAME	DATE
DIMENSIONS ARE IN INCHES	RKM		2-24-21
TOLERANCES:	CHECKED		
FRACTIONAL: $\pm 0.15$	ENG APPR.		
ANGULAR: MACH $\pm 0.5$ BEND $\pm 0.5$	MFG APPR.		
TWO PLACE DECIMAL $\pm 0.01$			
THREE PLACE DECIMAL $\pm 0.005$			
FOUR PLACE DECIMAL $\pm 0.0005$			
INTERPRET GEOMETRIC TOLERANCING PER: ASME Y14.5-1994			
MATERIAL			
FINISH			
DO NOT SCALE DRAWING			

SEE DETAILS	BREAK ALL SHARP EDGES
SEE DETAILS	
DO NOT SCALE DRAWING	



Janesville Tool & Manufacturing Inc. 3930 Enterprise Drive Janesville, WI 53546 Phone: 608-314-1620, Fax 608-314-1625		
TITLE: P-8151 SINGLE STAGE		
SIZE C	DWG. NO. P-8151-000-00	REV -
SCALE: 1:6 WEIGHT: 421.68 SHEET 1 OF 4		