

REGULATED PRESSURE	FORCE
60 PSI	1814
80 PSI	2419
100 PSI	3024

F

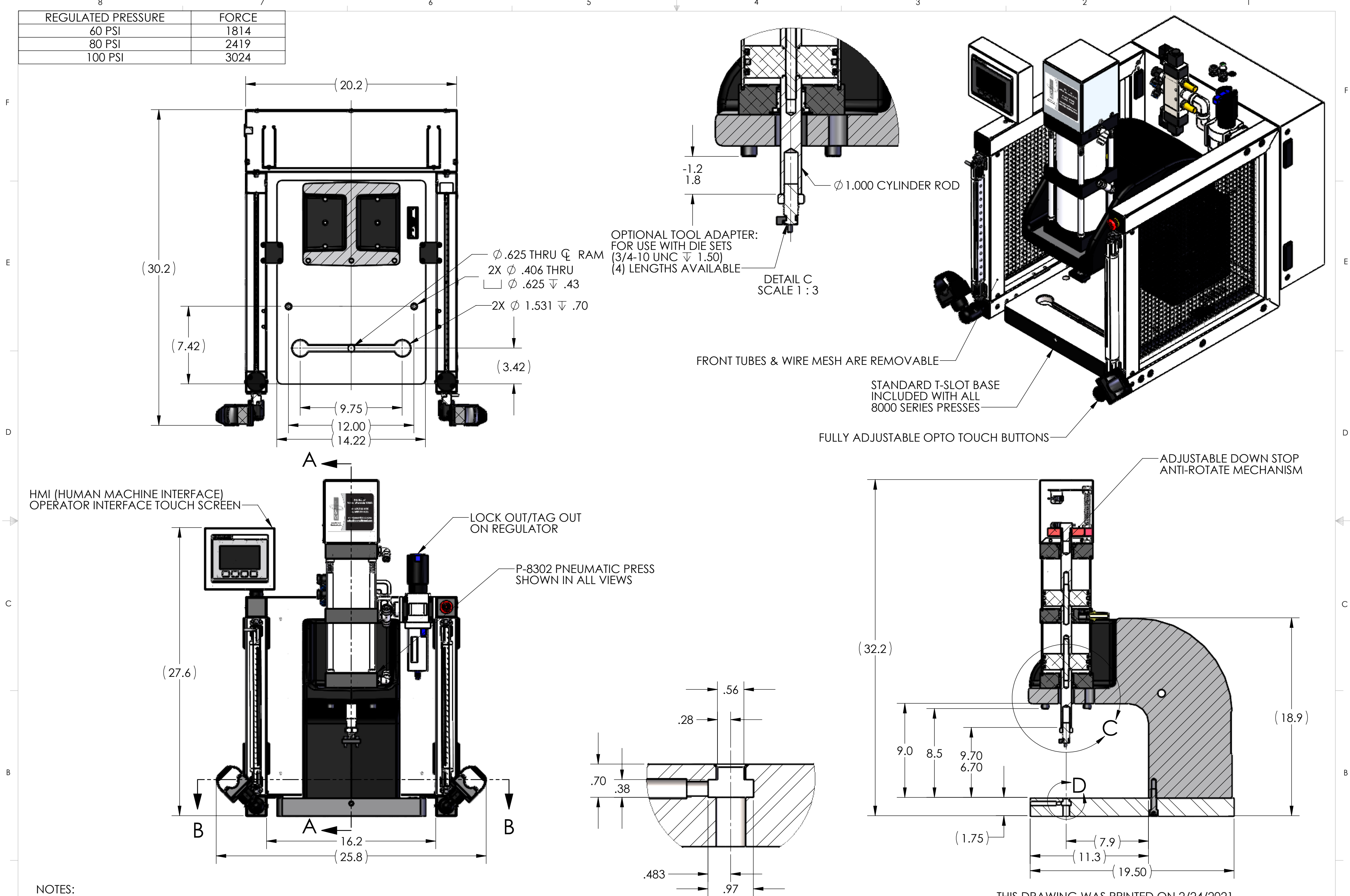
E

D

C

B

A



NOTES:

1. PRESS OPERATES ON LOW VOLTAGE (24V DC).
2. LED LIGHT COMES STANDARD.
3. OPTIONAL FORCE MONITORING SYSTEM AVAILABLE UPON REQUEST (NOT SHOWN).
4. CYLINDER ROD SHOWN IN EXTENDED POSITION.
5. ALL CYLINDERS COME STANDARD WITH 3" OF STROKE.
LONGER CYLINDER STROKE LENGTHS AVAILABLE UPON REQUEST (UP TO 12").
6. PRESS COMES STANDARD WITH 10" LONG POSTS.
ALTERNATE POST LENGTHS AVAILABLE UPON REQUEST (UP TO 18").
7. LIGHT CURTAIN, E-STOP AND TOOL ADAPTER SHOWN DO NOT COME STANDARD.
8. REMOVED GUARD IN RIGHT VIEW FOR CLARITY.

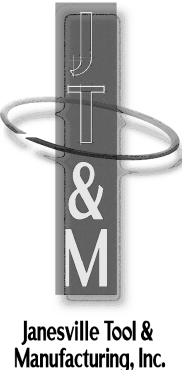
DETAIL D
SCALE 3 : 4

THIS DRAWING WAS PRINTED ON 2/24/2021

PROPRIETARY AND CONFIDENTIAL
THE INFORMATION CONTAINED IN THIS
DRAWING IS THE SOLE PROPERTY OF
JANESVILLE TOOL & MANUFACTURING INC.
ANY REPRODUCTION IN PART OR AS A WHOLE
WITHOUT THE WRITTEN PERMISSION OF
JANESVILLE TOOL & MANUFACTURING INC. IS
PROHIBITED.

UNLESS OTHERWISE SPECIFIED:	
DIMENSIONS ARE IN INCHES	
TOLERANCES:	
FRACTIONAL: ± 0.15	
ANGULAR: MACH ± 0.5 BEND ± 0.5	
TWO PLACE DECIMAL ± 0.01	
THREE PLACE DECIMAL ± 0.005	
FOUR PLACE DECIMAL ± 0.0005	
INTERPRET GEOMETRIC TOLERANCING PER: ASME Y14.5-1994	
MATERIAL	SEE DETAILS
FINISH	SEE DETAILS
DO NOT SCALE DRAWING	

NAME	DATE
RKM	2-24-21
CHECKED	
ENG APPR.	
MFG APPR.	
Q.A.	
COMMENTS:	
BREAK ALL SHARP EDGES	



Janesville Tool & Manufacturing Inc. 3930 Enterprise Drive Janesville, WI 53546 Phone: 608-314-1620, Fax 608-314-1625		
TITLE: P-8302 TWO STAGE		
SIZE C	DWG. NO. P-8302-000-00	REV -
SCALE: 1:6 WEIGHT: 433.48 SHEET 2 OF 4		