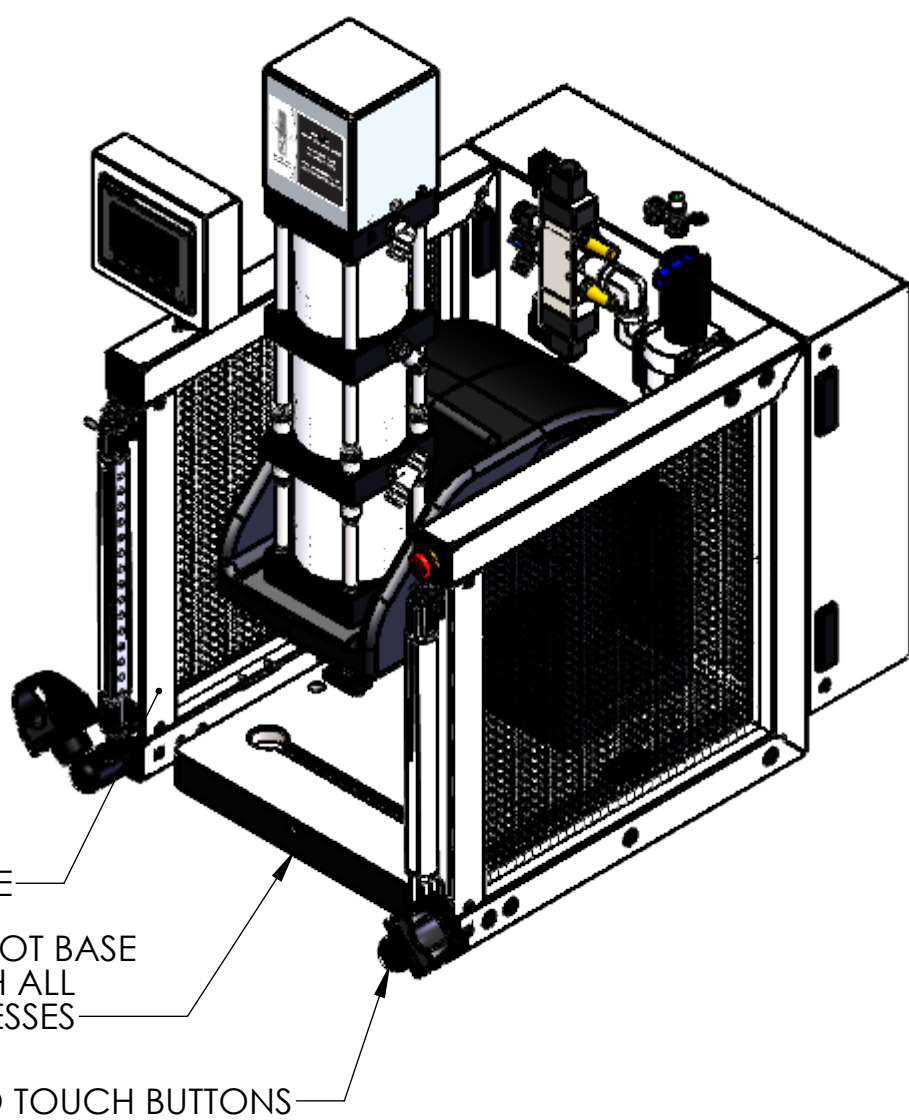
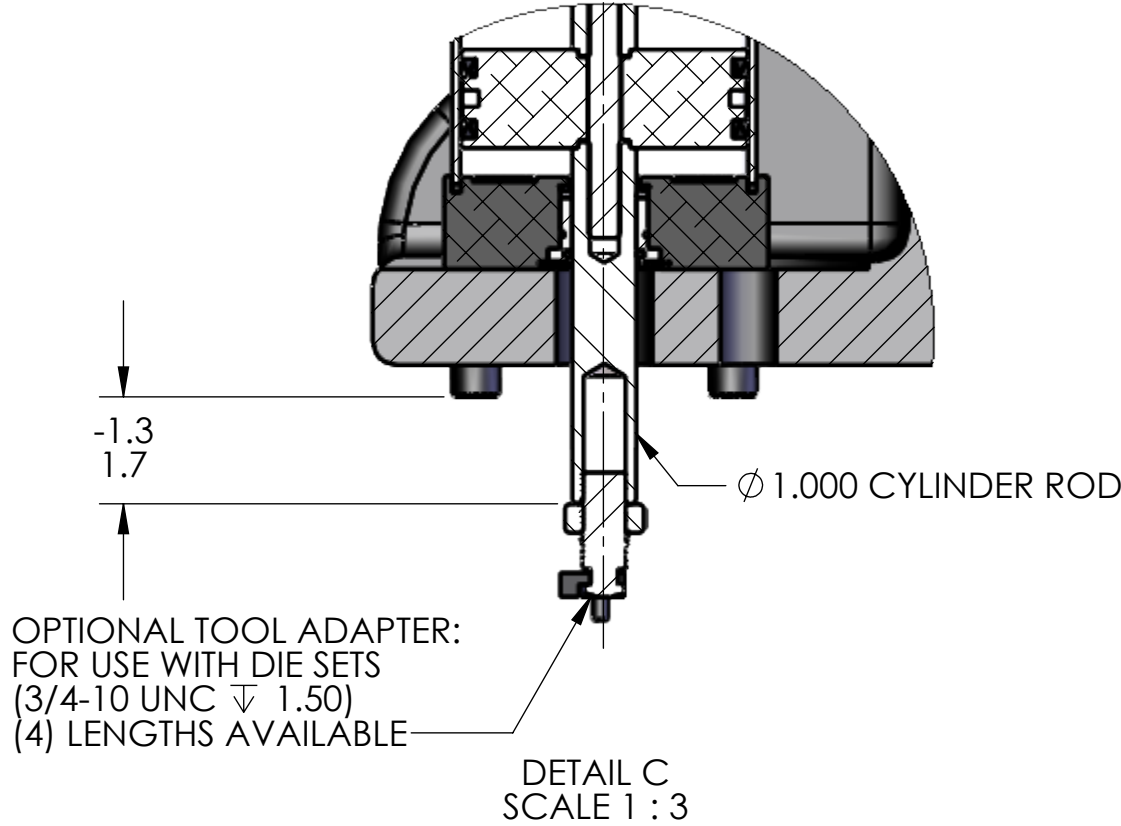
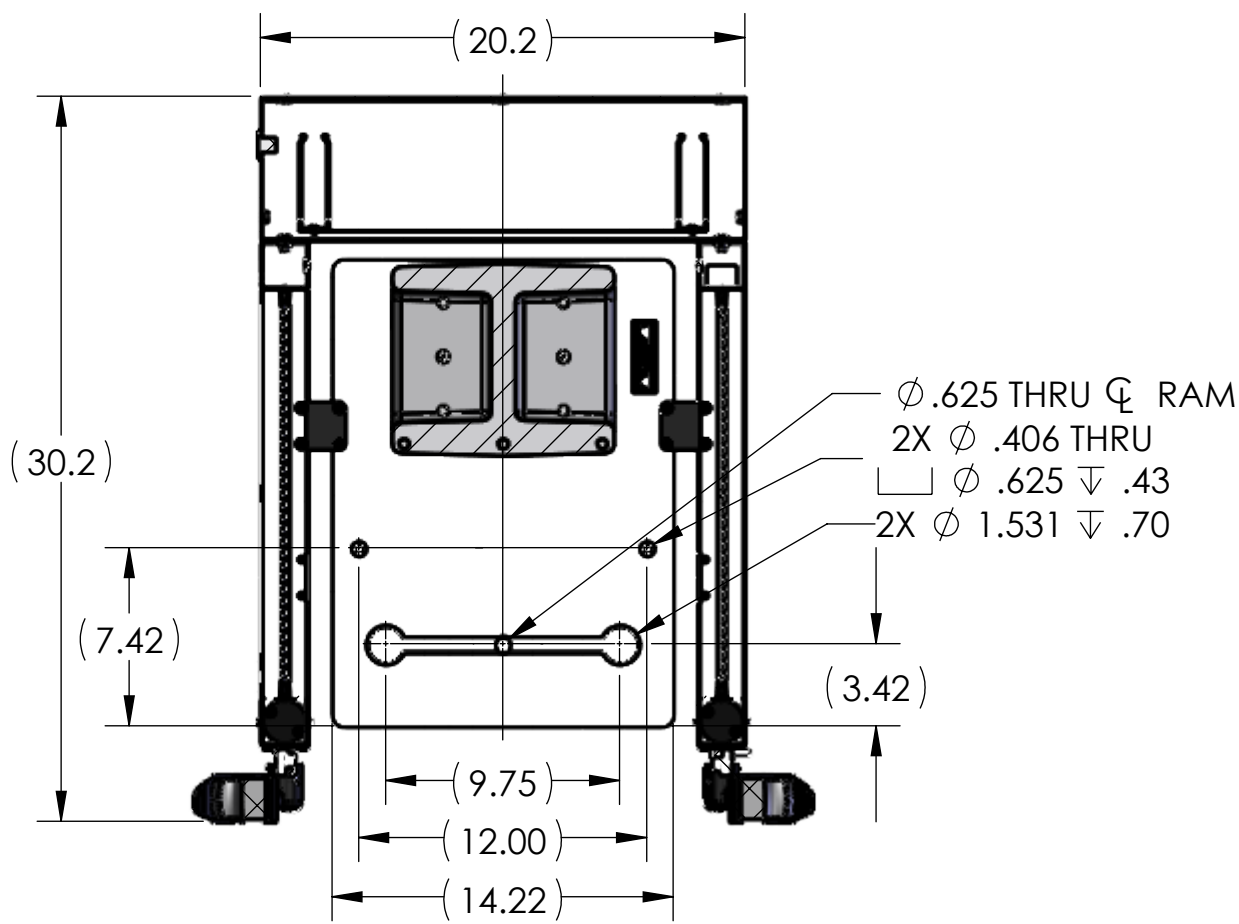
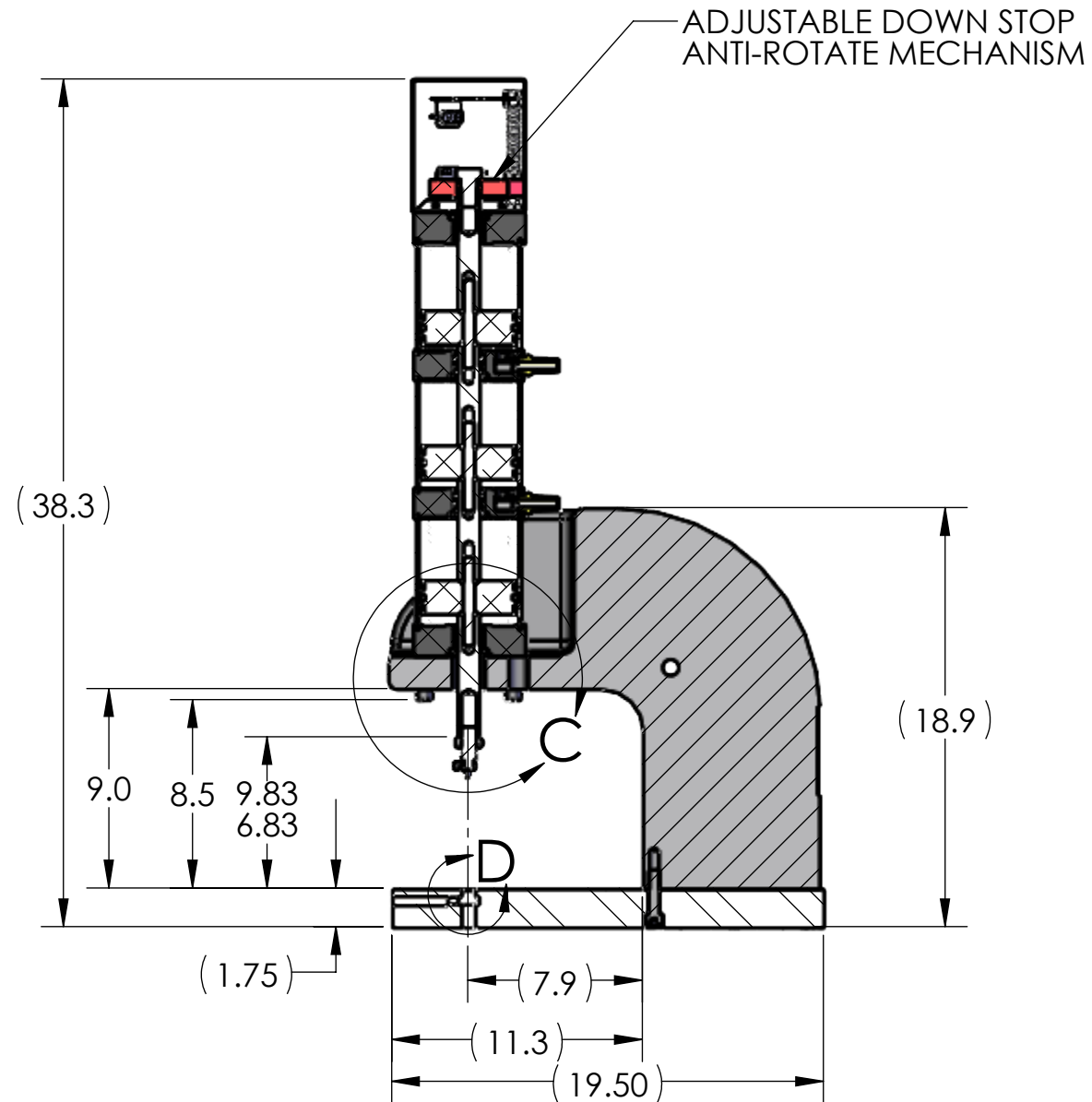
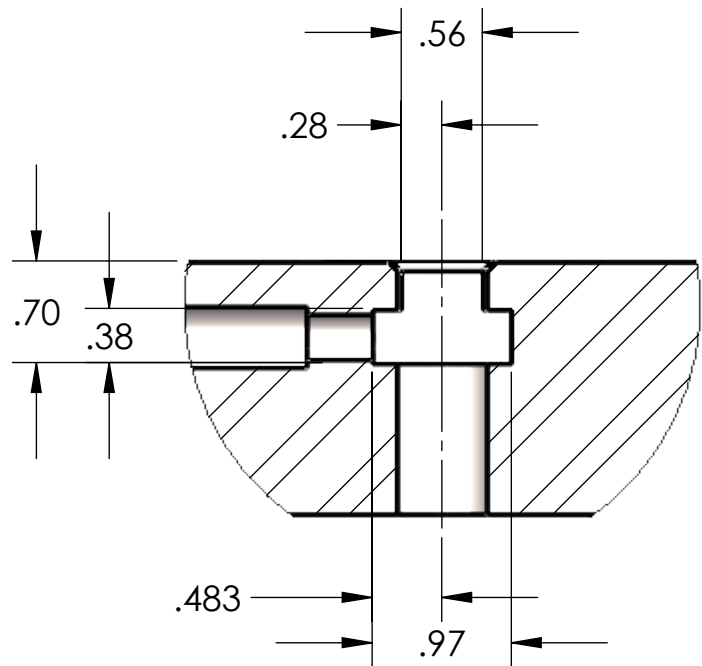
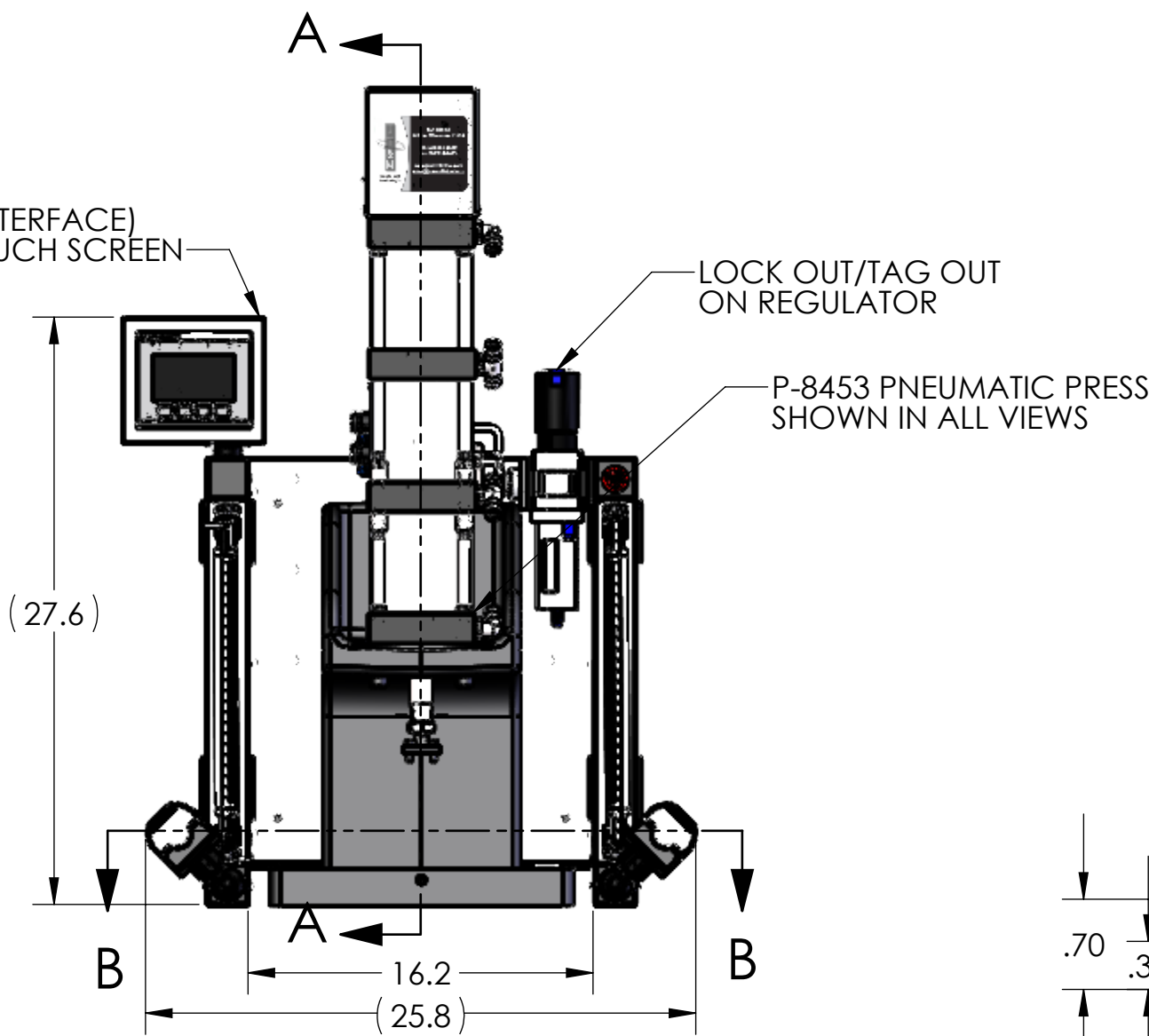


REGULATED PRESSURE	FORCE
60 PSI	2721
80 PSI	3629
100 PSI	4356



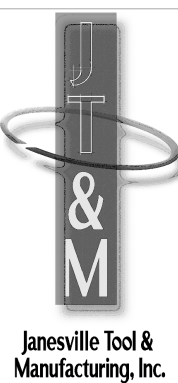
HMI (HUMAN MACHINE INTERFACE)
OPERATOR INTERFACE TOUCH SCREEN



- NOTES:
- PRESS OPERATES ON LOW VOLTAGE (24V DC).
 - LED LIGHT COMES STANDARD.
 - OPTIONAL FORCE MONITORING SYSTEM AVAILABLE UPON REQUEST (NOT SHOWN).
 - CYLINDER ROD SHOWN IN EXTENDED POSITION.
 - ALL CYLINDERS COME STANDARD WITH 3" OF STROKE.
LONGER CYLINDER STROKE LENGTHS AVAILABLE UPON REQUEST (UP TO 12").
 - PRESS COMES STANDARD WITH 10" LONG POSTS.
ALTERNATE POST LENGTHS AVAILABLE UPON REQUEST (UP TO 18").
 - LIGHT CURTAIN, E-STOP AND TOOL ADAPTER SHOWN DO NOT COME STANDARD.
 - REMOVED GUARD IN RIGHT VIEW FOR CLARITY.

PROPRIETARY AND CONFIDENTIAL
THE INFORMATION CONTAINED IN THIS DRAWING IS THE SOLE PROPERTY OF JANSVILLE TOOL & MANUFACTURING INC. ANY REPRODUCTION IN PART OR AS A WHOLE WITHOUT THE WRITTEN PERMISSION OF JANSVILLE TOOL & MANUFACTURING INC. IS PROHIBITED.

UNLESS OTHERWISE SPECIFIED:		
DIMENSIONS ARE IN INCHES		
TOLERANCES:		
FRACTIONAL: ± 0.15		
ANGULAR: MACH ± 0.5 BEND ± 0.5		
TWO PLACE DECIMAL ± 0.01		
THREE PLACE DECIMAL ± 0.005		
FOUR PLACE DECIMAL ± 0.0005		
INTERPRET GEOMETRIC TOLERANCING PER: ASME Y14.5-1994		
MATERIAL	SEE DETAILS	
FINISH	SEE DETAILS	
	DO NOT SCALE DRAWING	



THIS DRAWING WAS PRINTED ON 2/24/2021		
DRAWN	NAME	DATE
CHECKED	RKM	2-24-21
ENG APPR.		
MFG APPR.		
Q.A.		
COMMENTS:		
BREAK ALL SHARP EDGES		
Jansville Tool & Manufacturing, Inc.		
Janesville Tool & Manufacturing Inc. 3930 Enterprise Drive Janesville, WI 53546 Phone: 608-314-1620, Fax 608-314-1625		
TITLE: P-8453 THREE STAGE		
SIZE	DWG. NO.	REV
C	P-8453-000-00	-
SCALE: 1:8	WEIGHT: 442.81	SHEET 3 OF 4