

REGULATED PRESSURE	FORCE
60 PSI	118
80 PSI	157
100 PSI	196

F

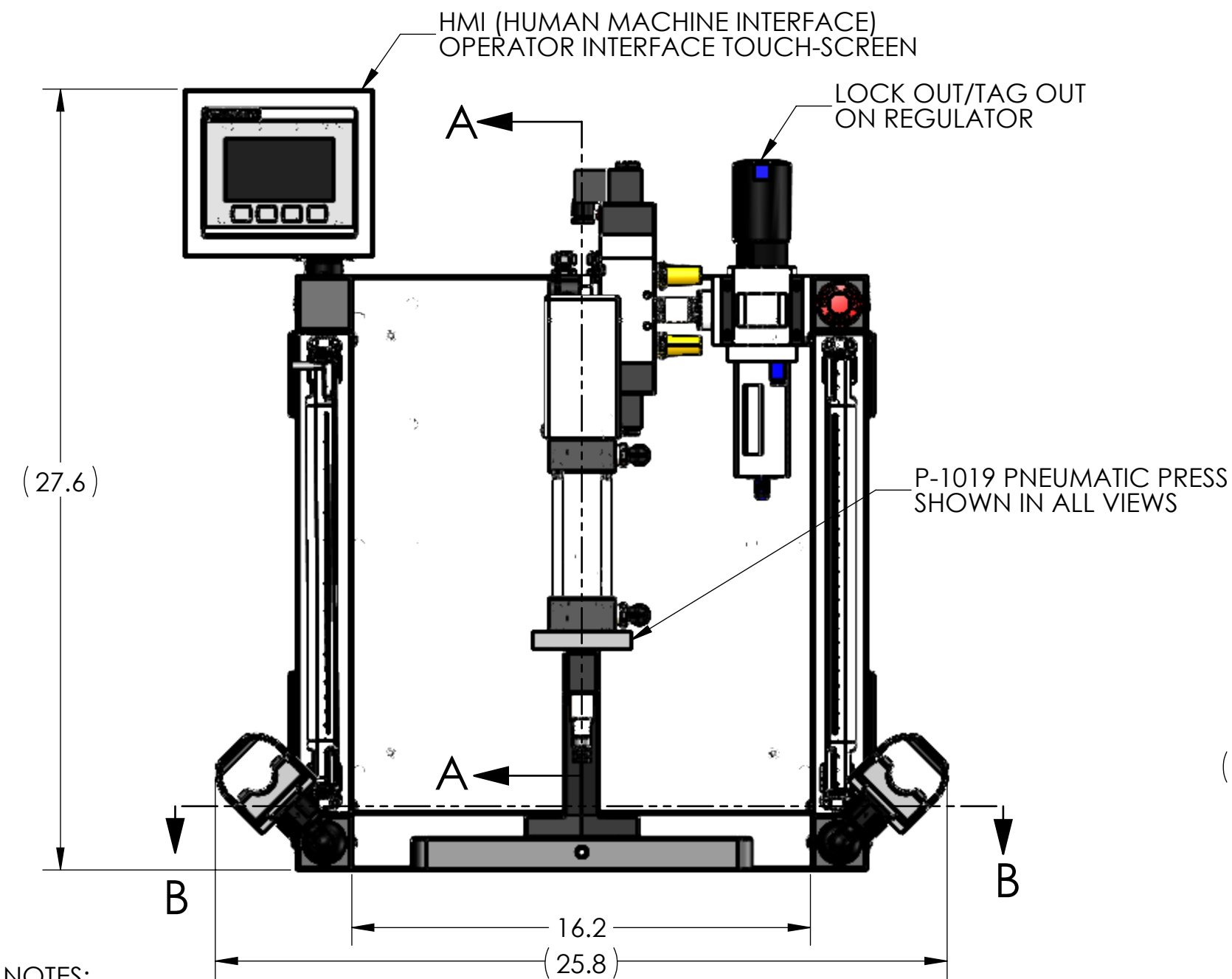
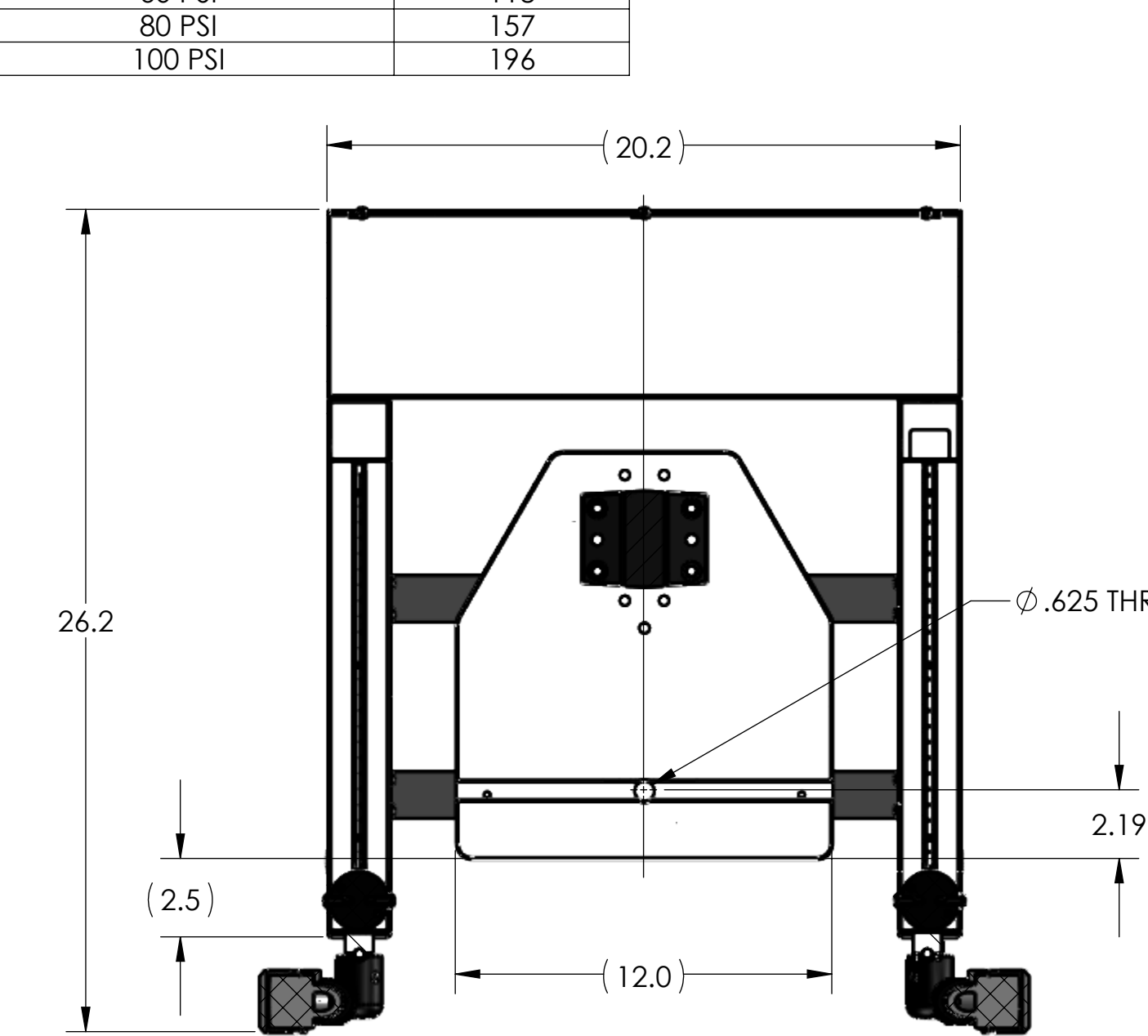
E

D

C

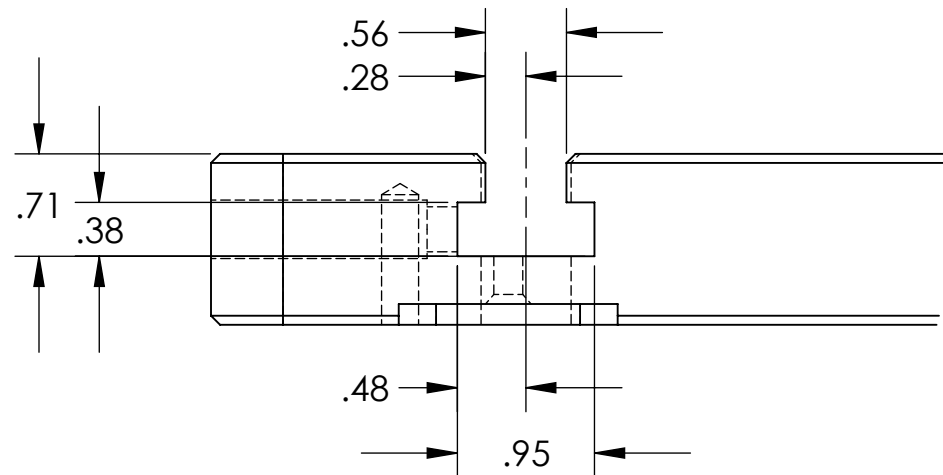
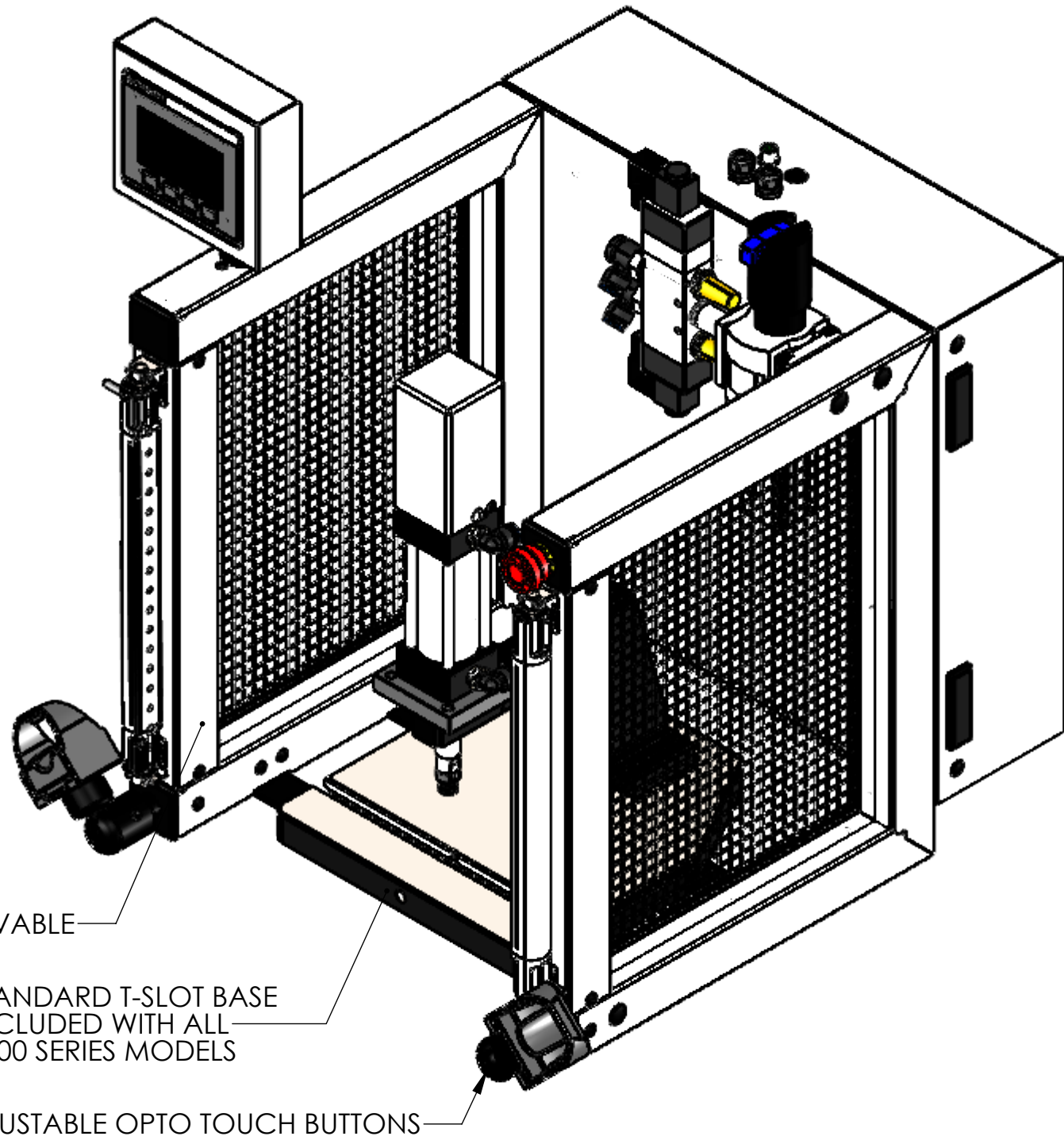
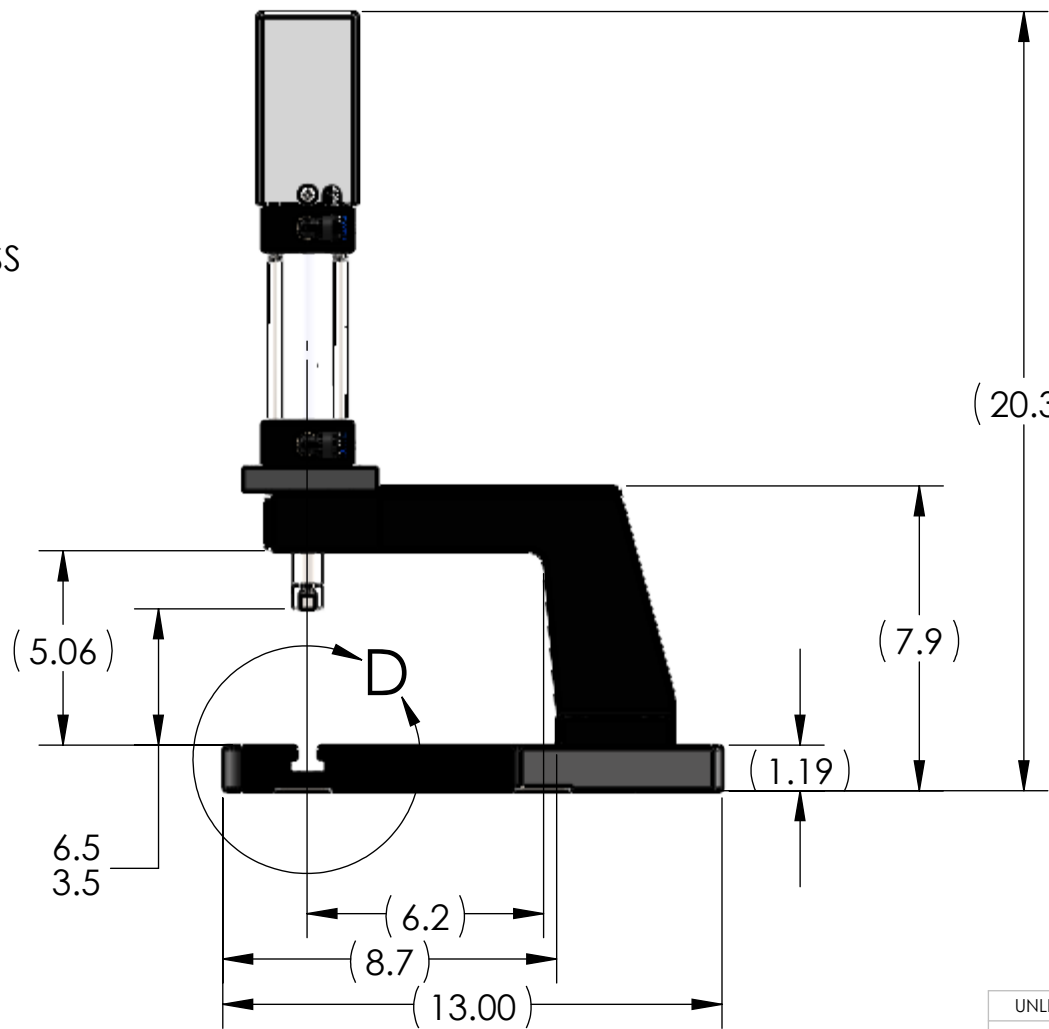
B

A



NOTES:

1. PRESS OPERATES ON LOW VOLTAGE (24V DC).
2. LED LIGHT COMES STANDARD.
3. OPTIONAL FORCE MONITORING SYSTEM AVAILABLE UPON REQUEST (NOT SHOWN).
4. OPTIONAL 500-15 ASSEMBLY BUSHING AVAILABLE UPON REQUEST (NOT SHOWN).
5. OPTIONAL RISER BLOCKS AVAILABLE UPON REQUEST (NOT SHOWN).
6. CYLINDER ROD SHOWN IN EXTENDED POSITION.
7. ALL CYLINDERS COME STANDARD WITH 3" OF STROKE.  
LONGER CYLINDER STROKE LENGTHS AVAILABLE UPON REQUEST (UP TO 12").
8. LIGHT CURTAIN, E-STOP AND TOOL ADAPTER SHOWN DO NOT COME STANDARD.
9. REMOVED GUARD IN RIGHT VIEW FOR CLARITY.



DETAIL D  
SCALE 3 : 4

THIS DRAWING WAS PRINTED ON 3/3/2021

UNLESS OTHERWISE SPECIFIED:		NAME	DATE
DIMENSIONS ARE IN INCHES		RKM	3-3-21
TOLERANCES:			
FRACTIONAL $\pm$ 0.15			
ANGULAR: MACH $\pm$ 0.5 BEND $\pm$ 0.5			
TWO PLACE DECIMAL $\pm$ 0.01			
THREE PLACE DECIMAL $\pm$ 0.005			
FOUR PLACE DECIMAL $\pm$ 0.0005			
INTERPRET GEOMETRIC TOLERANCING PER: ASME Y14.5-1994			
MATERIAL			
FINISH			
DO NOT SCALE DRAWING			
SEE DETAILS			
SEE DETAILS			
DO NOT SCALE DRAWING			
BREAK ALL SHARP EDGES			
Q.A. COMMENTS:			
Janesville Tool & Manufacturing Inc.			
3930 Enterprise Drive			
Janesville, WI 53546			
Phone: 608-314-1620, Fax 608-314-1625			
TITLE:			
P-1019 SINGLE STAGE			
SIZE	DWG. NO.	REV	
C	P-1019-000-00	-	
SCALE: 1:5	WEIGHT: 124.68	SHEET 1 OF 2	