

REGULATED PRESSURE	FORCE
60 PSI	398
80 PSI	530
100 PSI	663

F

E

D

C

B

A

ADJUSTABLE DOWN STOP
ANTI-ROTATE MECHANISM

-1.5
1.5

OPTIONAL TOOL ADAPTER:
FOR USE WITH DIE SETS
(1/2"-13 UNC ∇ 1.25)
(4) LENGTHS AVAILABLE

ϕ .750 CYLINDER ROD

FRONT TUBES & WIRE MESH ARE REMOVABLE

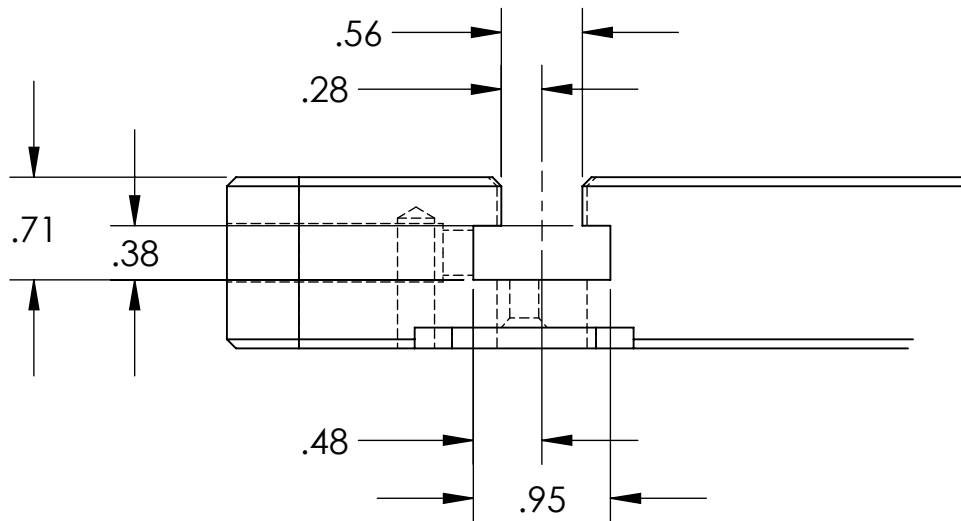
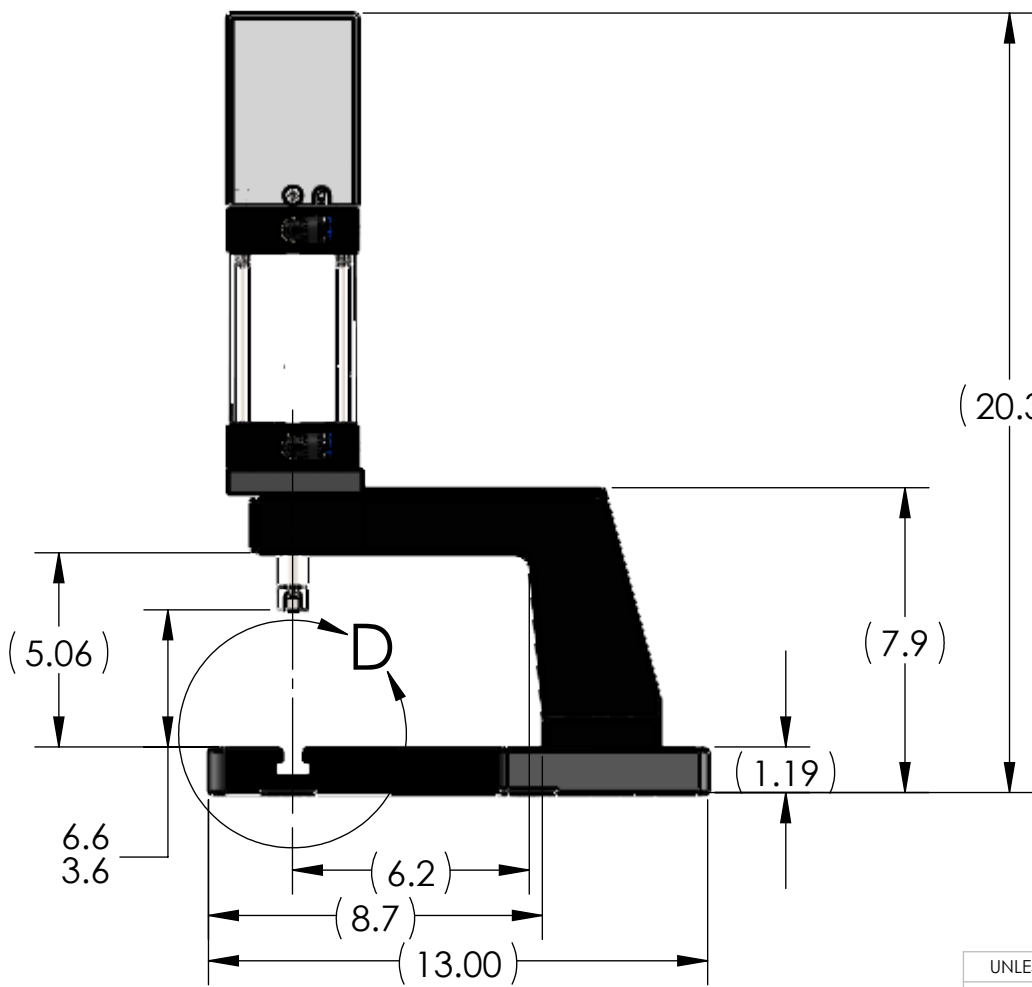
STANDARD T-SLOT BASE
INCLUDED WITH ALL
1000 SERIES MODELS

FULLY ADJUSTABLE OPTO TOUCH BUTTONS

HMI (HUMAN MACHINE INTERFACE)
OPERATOR INTERFACE TOUCH-SCREEN

LOCK OUT/TAG OUT
ON REGULATOR

P-1066 PNEUMATIC PRESS
SHOWN IN ALL VIEWS



DETAIL D
SCALE 3 : 4

NOTES:

1. PRESS OPERATES ON LOW VOLTAGE (24V DC).
2. LED LIGHT COMES STANDARD.
3. OPTIONAL FORCE MONITORING SYSTEM AVAILABLE UPON REQUEST (NOT SHOWN).
4. OPTIONAL 500-15 ASSEMBLY BUSHING AVAILABLE UPON REQUEST (NOT SHOWN).
5. OPTIONAL RISER BLOCKS AVAILABLE UPON REQUEST (NOT SHOWN).
6. CYLINDER ROD SHOWN IN EXTENDED POSITION.
7. ALL CYLINDERS COME STANDARD WITH 3" OF STROKE.
LONGER CYLINDER STROKE LENGTHS AVAILABLE UPON REQUEST (UP TO 12").
8. LIGHT CURTAIN, E-STOP AND TOOL ADAPTER SHOWN DO NOT COME STANDARD.
9. REMOVED GUARD IN RIGHT VIEW FOR CLARITY.

THIS DRAWING WAS PRINTED ON 3/3/2021

UNLESS OTHERWISE SPECIFIED:		
DIMENSIONS ARE IN INCHES		
TOLERANCES:		
FRACTIONAL \pm 0.15		
ANGULAR: MACH \pm 0.5 BEND \pm 0.5		
TWO PLACE DECIMAL \pm 0.01		
THREE PLACE DECIMAL \pm 0.005		
FOUR PLACE DECIMAL \pm 0.0005		
INTERPRET GEOMETRIC TOLERANCING PER: ASME Y14.5-1994		
MATERIAL		
FINISH		
DO NOT SCALE DRAWING		

NAME	DATE
DRAWN RKM	3-3-21
CHECKED	
ENG APPR.	
MFG APPR.	
Q.A.	
COMMENTS:	
BREAK ALL SHARP EDGES	



Janesville Tool & Manufacturing Inc. 3930 Enterprise Drive Janesville, WI 53546 Phone: 608-314-1620, Fax 608-314-1625		
TITLE: P-1066 SINGLE STAGE		
SIZE C	DWG. NO. P-1066-000-00	REV -
SCALE: 1:5 WEIGHT: 127.56 SHEET 2 OF 2		

F

E

D

C

B

A