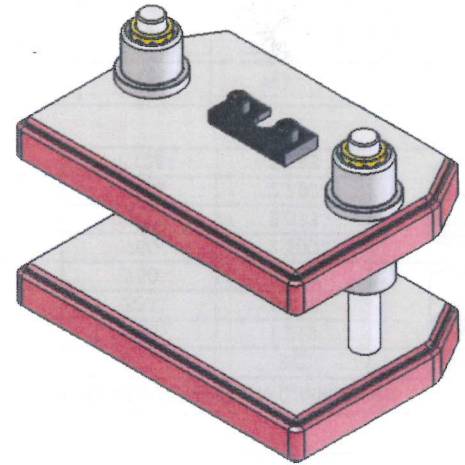
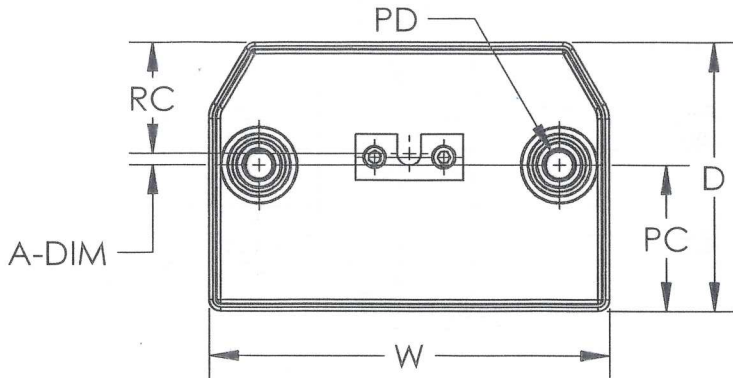


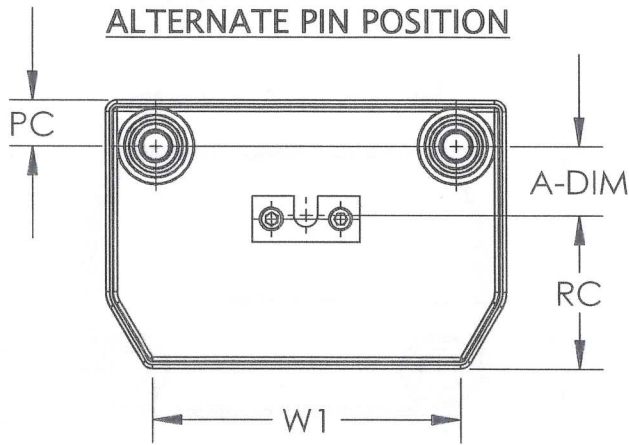
Janesville Tool & Manufacturing INC.

A36 Steel Die Set with Ball Bushing Chart

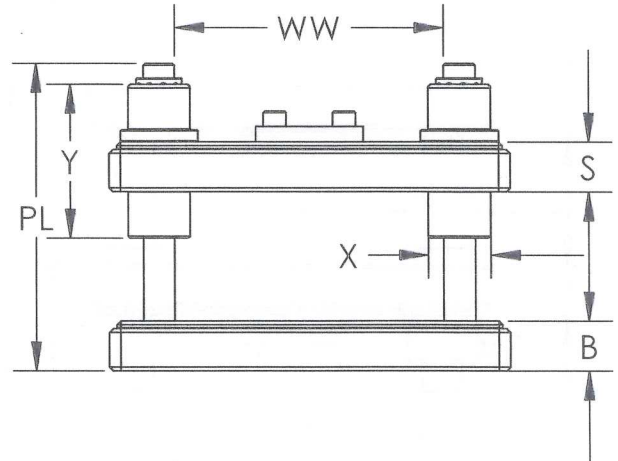
BALL BUSHING STANDARD POSITION



BALL BUSHING ALTERNATE PIN POSITION



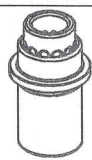
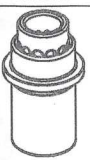
FRONT VIEW



NOTES:

1. OPTIONAL (-A) ATTACHMENT PLATE.
500-18 FOR #1MDS AND #2MDSB, USES 2X 10-32 X .50 LG SHCS.
500-19 FOR #3-7MDSB, USES 2X 1/4-20 X .5 LG SHCS.
2. 1/4-20 UNC HOLE IN LOWER DIE PLATE IS ON RAM CENTER LINE.

A36 STEEL DIE SETS WITH BALL BUSHINGS

PART NUMBER	BALL BUSHING STANDARD POSITION				BALL CAGE & SLEEVE	BALL BUSHING ALTERNATE PIN POSITION				BALL CAGE & SLEEVE
	A-DIM	PC	RC			A-DIM	PC	RC		
2MDSB	.125	1.438	1.313			.875	.531	1.531		
3MDSB	.188	2.000	1.563	.938		.750	2.125			
4MDSB	.188	2.375	1.813	1.188		.750	2.500			
5MDSB	.063	2.750	2.188	1.625		1.125	2.313			
6MDSB	.063	3.250	2.688	2.188		1.125	2.750			
7MDSB	.063	3.500	3.438	2.313		1.125	3.563			
GENERAL DIMENSIONS										
PART NUMBER	D	W	B	S	PD	PL	WW	W1	X	Y
2MDSB	2.875	3.500	.750	.563	.375	5.000	2.000	2.625	.750	2.500
3MDSB	3.750	5.000	.813	.625	.500	5.000	3.000	4.125	1.000	2.500
4MDSB	4.375	6.500	.813	.813	.500	5.000	4.375	5.375	1.000	2.500
5MDSB	5.000	8.500	1.000	1.000	.750	6.750	5.625	7.625	1.375	2.500
6MDSB	6.000	9.500	1.000	1.000	.750	6.750	6.625	8.500	1.375	2.500
7MDSB	7.000	10.375	1.000	1.000	.750	6.750	7.000	9.125	1.375	2.500