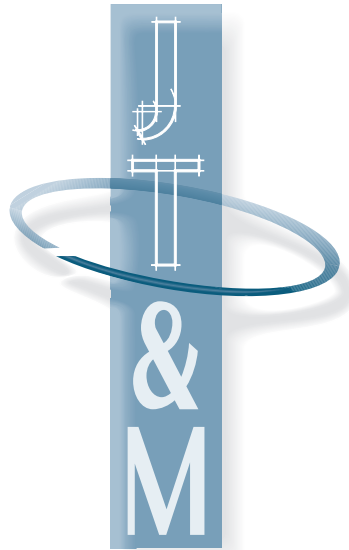


EC - SERIES
PRESS ASSEMBLY:



**Janesville Tool &
Manufacturing, Inc.**

3930 Enterprise Drive
Janesville, WI 53546

Phone 608•314•1620
Fax 608•314•1625

www.janesvilletool.com
sales@janesvilletool.com

Thank you for purchasing this press. Please take a few moments to fill out the warranty card and return it with the posted paid card or fill out the form Online at www.janesvilletool.com/warranty

Included in this package is:

1. Press frame with cylinder
2. C66-100 Controls (EC-66 only)
3. EV-100 Valve Assembly (EC-66 only)
4. (2) 1/4" diameter nylon air tube (EC-66 only)
5. (2) 8-32 x 1 1/4" long screws (EC-66 only)

If you cannot find any of the contents above please call us at 608-314-1620 or email at sales@janesvilletool.com

SAFETY INSTRUCTIONS
READ ALL INSTRUCTIONS CAREFULLY

1. Do not operate press with guards removed. All safety devices must be installed and operable.
2. Palm buttons must be permanently mounted for safe use with with EC-66.
3. Additional guarding is required for special tooling.
4. Disconnect press when: not in use, before servicing.
5. Wear safety glasses while operating press.
6. Guard against electric shock. Do not use in damp places.
7. Dress properly, do not wear loose fitting clothing or jewelry that could get caught in moving parts.
8. Keep hands away. Never reach near moving parts.
9. Do not operate press over 80 PSI. Excess pressure may cause damage or injury.
10. Do not operate press over labeled voltage.

SAFETY INSTRUCTIONS

CONTINUED

11. Watch for damaged parts. If press is damaged during operation, examine the damaged part carefully to insure that it will operate properly. If in doubt, replace the damaged part. Check for alignment of moving parts, binding of moving parts, mounting and any other conditions that may affect its operation.
12. Keep work area clean. Cluttered areas and benches invite injury.
13. Stay alert. Watch what you are doing. Use common sense.

MAINTENANCE GUIDELINES

Thanks to its unique design, this press requires virtually no maintenance. Clean, dry air is required for operations. (Lubricated air may be used, but must be used for the life of the press.)

CONTROL MODULE

The life expectancy for the control module (#540) is one million cycles. Replacing the module on a yearly basis will ensure production reliability and avoid costly downtime.

FLOW CONTROLS

To alter the ram descent speed on your JT&M Press, adjust the screw marked B located on the left hand side of the cylinder. To alter the ram ascent speed, adjust screw A. (The ram retraction speed has been preset by the factory). Rotate the screws clockwise to decrease the speed of the ram.

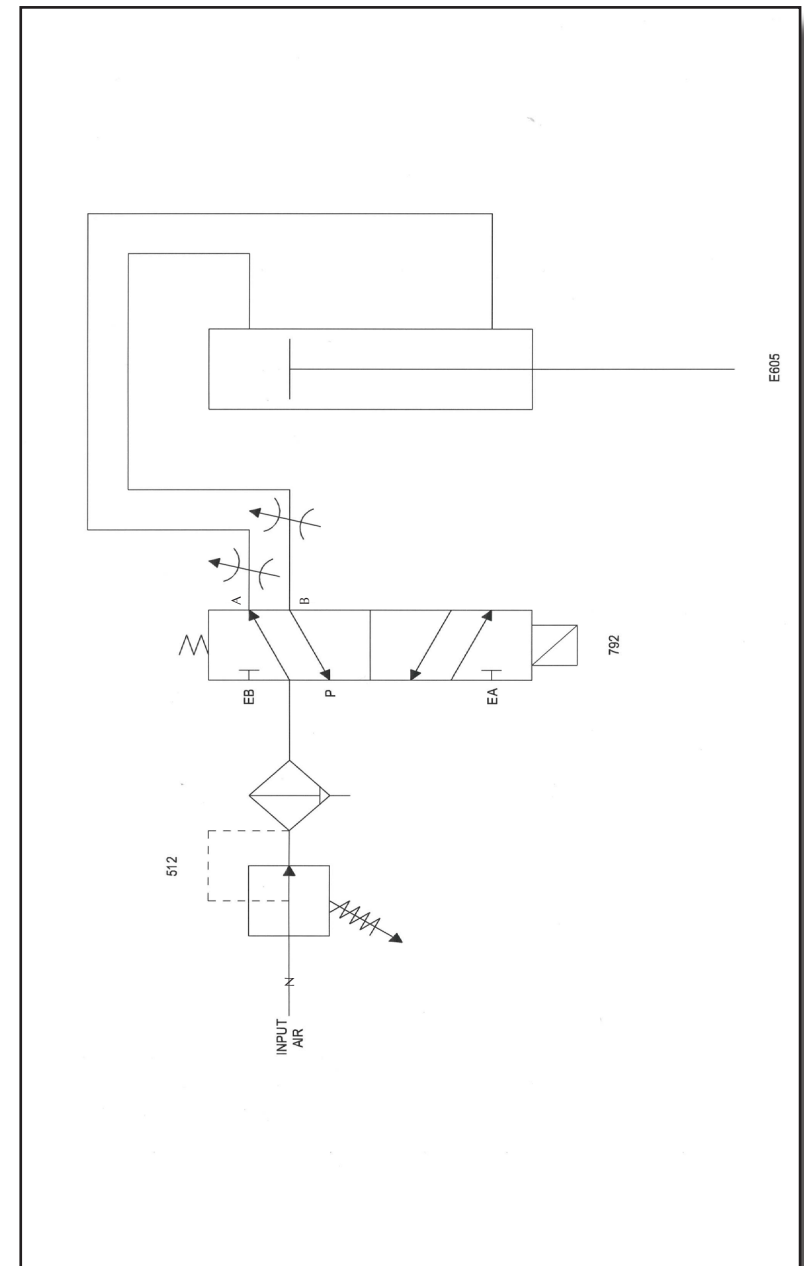
PRESS OPERATION

To operate the press, push palm buttons in at the same time. Hold the palm buttons in until the down stroke is completed. Releasing the palm button will return the press.

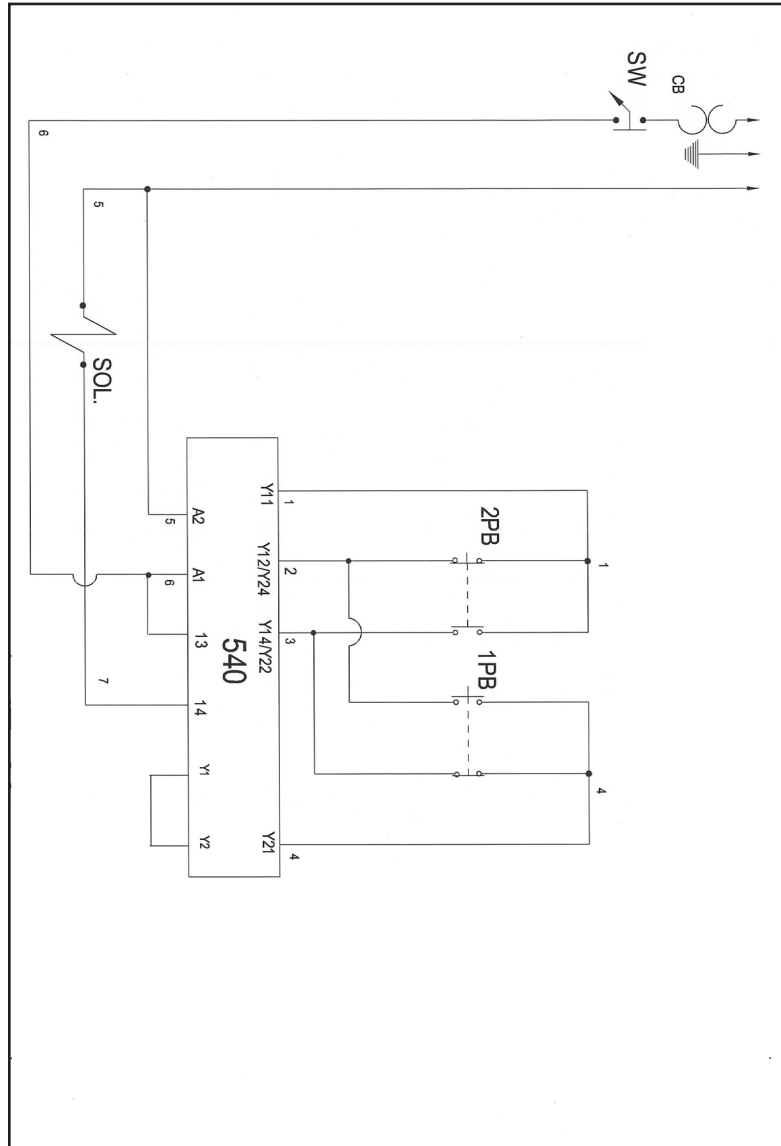
PLEASE WRITE SERIAL NO. HERE

--

PNEUMATIC SCHEMATIC



ELECTRICAL SCHEMATIC

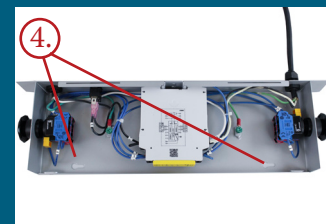


ASSEMBLY INSTRUCTIONS

- Using the (2) Provided 8-32 x 1 1/4" long screws, mount the valve assembly model EV-100 onto the upper casting located on the rear of the cylinder. This will require the 9/64th Allen wrench to do so. **See photo #1**
- Using #1 Phillips screw driver install plug from the C66-100 controls onto the EV-100 valve assembly. **See photo #2**
- Push the 1/4" diameter nylon tube into the two air fittings located on the cylinder. **See photo #3.** Gently pull back on the tube to make sure the air fittings have gripped the tube.
- Repeat this step by pushing the 1/4" tube into the fittings located on the EV-100 valve assembly. Make sure you match the cylinder corresponding port letter on the cylinder to the valve.
- Locate your press and mount your controls. It is required that you mount your controls for complete safe operations. (2) Mounting holes are provided inside the C66-100 controls. It is recommended that you mount your controls in front of the press centered lying flat on the table. **See photo #4.**
- Pipe 3/8" diameter air line minimum to port N (1/4") NPT located on EV-100 valve assembly.
- Turn on air by turning the black knob clockwise. Set your press to the desired pressure by reading the gauge located on the rear of the press. Multiply 6.6 times the air pressure to get output force
- Plug in the power cord into a 110 volt outlet.
- Turn on power using fused switch. **See photo #5.**
- Make sure press operates correctly by simultaneously pushing the palm buttons located on each end of C66-100 controls. When the buttons are pushed the cylinder should advance down. When released the cylinder will return.

TOOLS REQUIRED

- 9/64th Allen wrench
- #1 Phillips screw driver



EC - SERIES PARTS LIST

MODELS E-66 & EC-66

ITEM	REQ'D	NAME	PART NO.
1	1	Press Base	2000-01P
2	1	Control Box Cover	2000-33
3	1	Control Box Base	2000-34
4	1	Column	2000-37
5	1	Top Guard	2000-38
6	1	Anti-Rotate Stud	3000-09
7	2	Push Button	503A
8	1	Air Filter/Regulator	512
9	1	1/4" NPT Muffler	513
10	2	Fused Switch	587
12	1	Control Module	540
14	1	3" Pipe Nipple	784
15	1	Cap for Top Guard	785
18	1	Bronze Bushing	789
19	1	Valve	792
20	1	Adjustable Down Stop	967-10

CYLINDER INFORMATION

Model E-66 3" Bore x 3" Stroke -- Double End E605
(Repair Kit 3" Bore -- Double End) 20350

Model EC-66 3" Bore x 3" Stroke -- Double End E605
(Repair Kit 3" Bore -- Double End) 20350

