

The C-5000 and CA-5000 are rated to withstand 8000 lbs. of force. The C-5000 cam press is ideal for circuit board assembly, parts assembly, staking, crimping, and for stamping plastics. Its 3/4" ram guidance assures accuracy and smooth press operation with little deflection. Longer posts can be added to increase throat height. The upper cam bracket assembly (CA-5000) can be purchased separately to mount on your custom-made press frame.

Features:

- Low Deflection
- 2 Bushing Guidance
- 4 Post Design

Options:

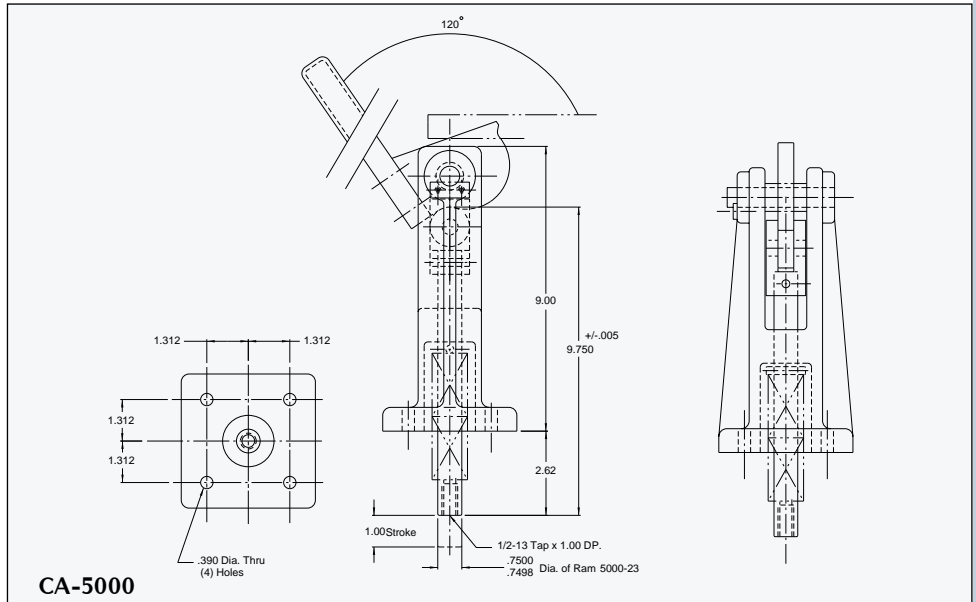
- Die Sets (See Page 16)
- Longer Post Length
- Arrange Press For Die Set Mtg. Add Suffix (-A)



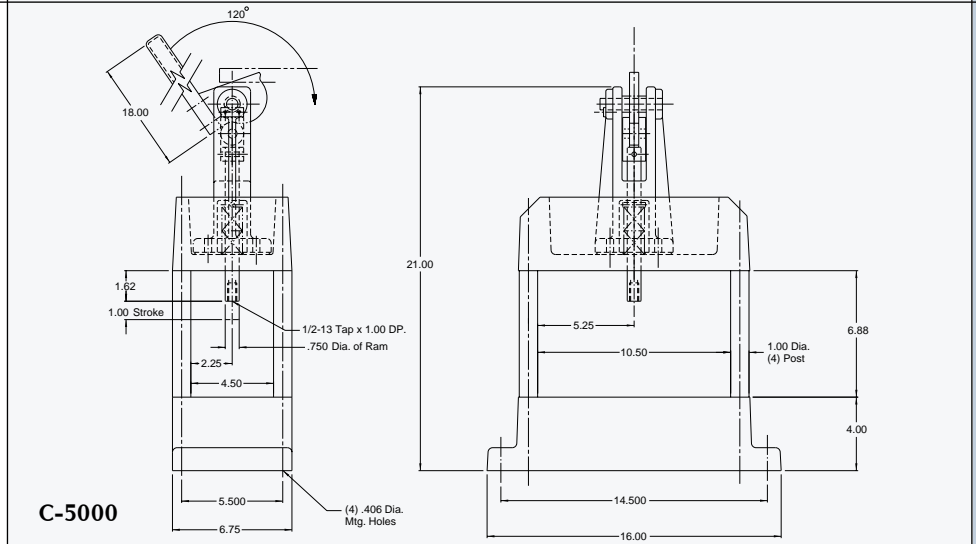
C-5000



CA-5000

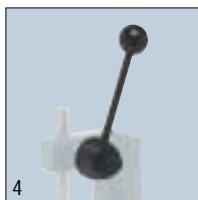
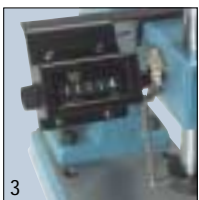
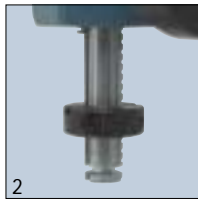


CA-5000



C-5000

MANUAL PRESS ATTACHMENTS



- 1. Adjustable Down Stop** The Adjustable Down Stop is designed to clamp anywhere onto the ram of the press. An adjusting screw is supplied in the unit to assure accurate down stop position with every cycle.
- 2. Up-Stroke Limiter** Like the Adjustable Down Stop, the Up-Stroke Limiter clamps onto the ram of the press at any position. It is designed to limit the travel of the up-stroke in order to increase press productivity.
- 3. Counter and Bracket** This counter attaches to many of our manual presses and allows you to accurately track parts production.
- 4. Adjustable Handle Model AH** This option lets you adjust your handle position in 30° increments without removing ram from the press. It also allows 360° rotation of handle with the die set installed, except #4 MDS thru #7 MDS.