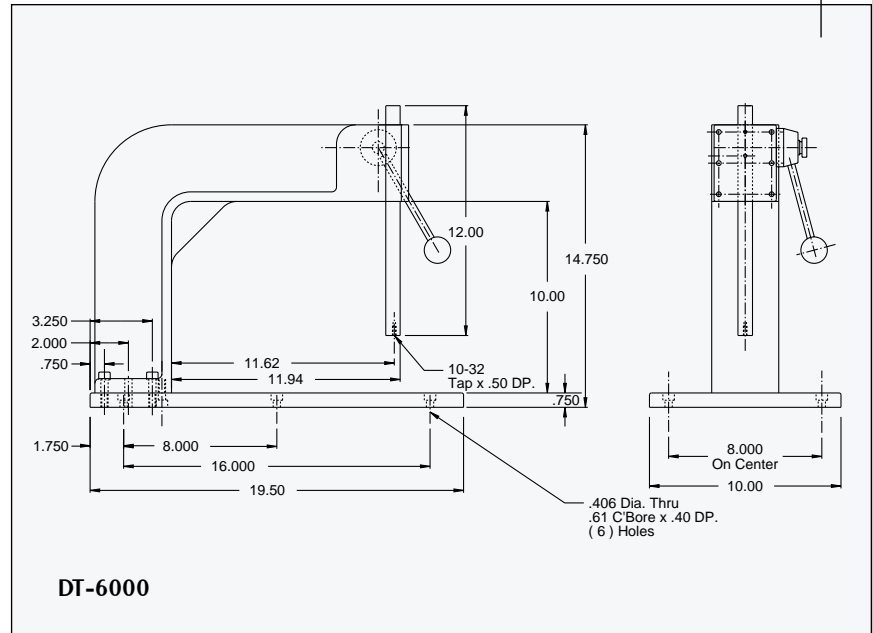


The DT-6000 Deep Throat Lever Press allows the user throat clearance of 11-5/8 inches and a overall height of 10 inches under the ram. This precision assembly press consists of a ground steel base and separate ductile iron column. If needed the clearance under the column can be increased by adding a riser block between the steel base and column flange. The press has a force rating of 200 lbs and contains a 3/4" square ground ram with an adjustable gib for continual accuracy. An adjustable handle is standard. This press is ideal for circuit board assembly work!

**Options:**

- Stroke Limiters (Model SL)
- Die Sets (See Page 16)
- Riser Blocks
- Arrange Press For Die Set Mtg. Add Suffix (-A)

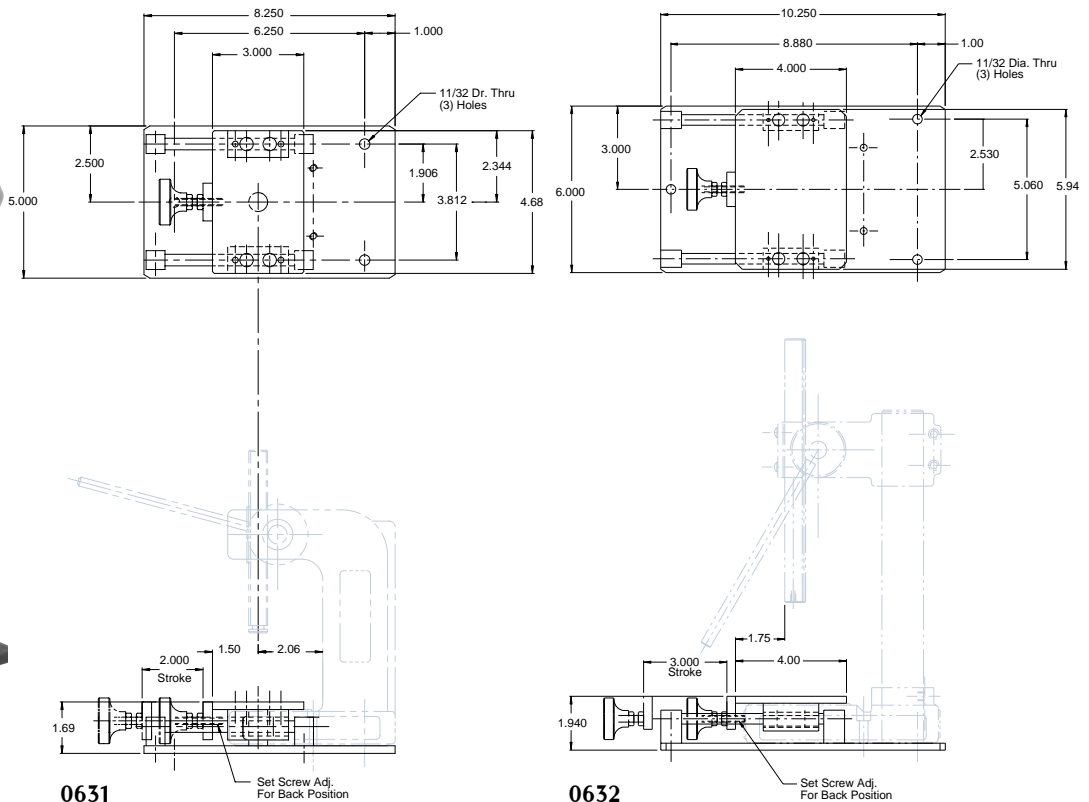


**MULTI POSITION FIXTURES 0631 & 0632**

The multi-position fixtures, 0631 and 0632, consist of a ground steel platen that can be indexed out from under the press ram to provide improved access to the fixture. This platen rides on precision-fitted guide pins and bronze bushings. An adjustment screw is provided for accurate end stop positioning under the press ram. The multi-position fixture is a self-contained unit that can be mounted to our presses with (2) screws.

**Options:**

- Ground Steel Platen
- Adjustment Screw
- Self-Contained Unit
- Easily Mounted



Models:  
0631, 0632