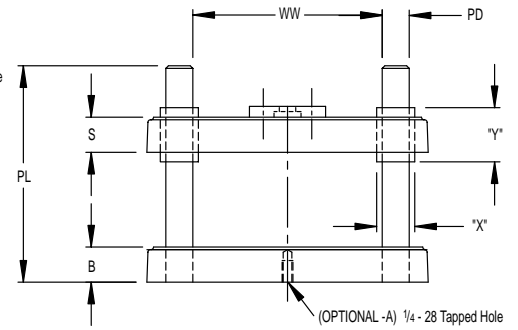
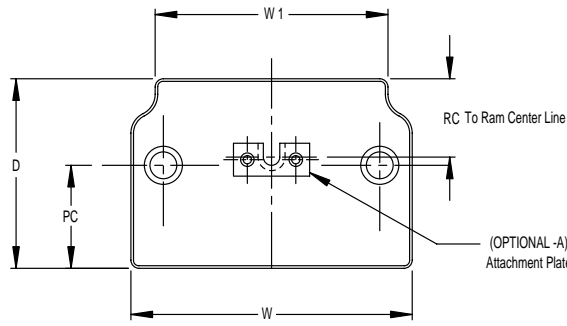


DIE SETS



#5 MDS



OPTIONS:

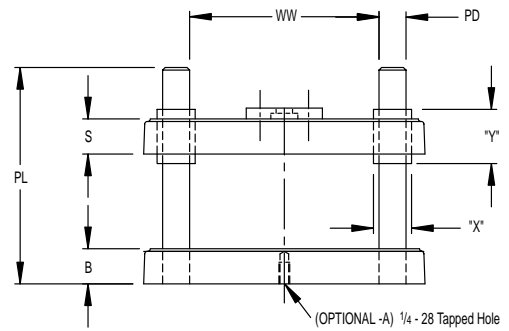
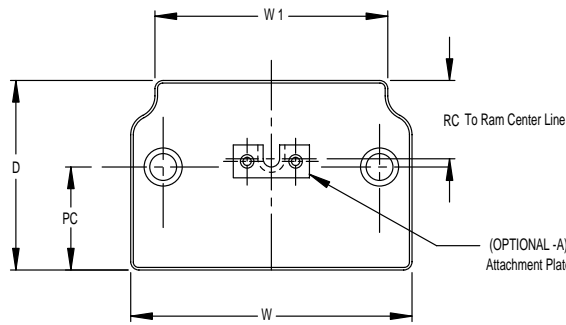
- Longer Pins (Available Upon Request)
- Alternate Pin Positions (Available Upon Request)
- Arranged For Assembly (Add Suffix -A)*

Model	D	W	B	S	PC	PD	PL	WW	W1	"X"	"Y"	RC
#1 MDS	2 1/4	2 5/8	5/8	1/2	1 1/16	5/16	3	1 9/16	2 1/8	1/2	3/4	1.12
#2 MDS	2 7/8	3 1/2	3/4	9/16	1 7/16	3/8	3 1/2	2 1/8	2 5/8	5/8	1	1.31
#3 MDS	3 3/4	5	13/16	5/8	2	1/2	5	3 1/4	4 1/8	3/4	1 3/8	1.56
#4 MDS	4 3/8	6 1/2	13/16	13/16	2 3/8	5/8	5	4 3/8	5 3/8	7/8	1 1/4	1.81
#5 MDS	5	8 1/2	1	1	2 3/4	3/4	6 3/4	5 5/8	7 5/8	1 3/8	2 1/2	2.19
#6 MDS	6	9 1/2	1	1	3 1/4	3/4	6 3/4	6 5/8	8 1/2	1 3/8	2 1/2	2.69
#7 MDS	7	10 3/8	1	1	3 1/2	3/4	6 3/4	7	9 1/8	1 3/8	2 1/2	3.44

CAST IRON DIE SETS WITH BALL BUSHINGS



#5 MDSB



OPTIONS:

- Longer Pins (Available Upon Request)
- Alternate Pin Positions (Available Upon Request)
- Arranged For Assembly (Add Suffix -A)*

Model	D	W	B	S	PC	PD	PL	WW	W1	"X"	"Y"	RC
#2 MDSB	2 7/8	3 1/2	3/4	9/16	1 7/16	3/8	5	2	2 5/8	3/4	2 1/2	1.31
#3 MDSB	3 3/4	5	13/16	5/8	2	1/2	6	3	4 1/8	1	2 1/2	1.56
#4 MDSB	4 3/8	6 1/2	13/16	13/16	2 3/8	1/2	6	4 3/8	5 3/8	1	2 1/2	1.81
#5 MDSB	5	8 1/2	1	1	2 3/4	3/4	6 3/4	5 5/8	7 5/8	1 3/8	2 1/2	2.19
#6 MDSB	6	9 1/2	1	1	3 1/4	3/4	6 3/4	6 5/8	8 1/2	1 3/8	2 1/2	2.69
#7 MDSB	7	10 3/8	1	1	3 1/2	3/4	6 3/4	7	9 1/8	1 3/8	2 1/2	3.44